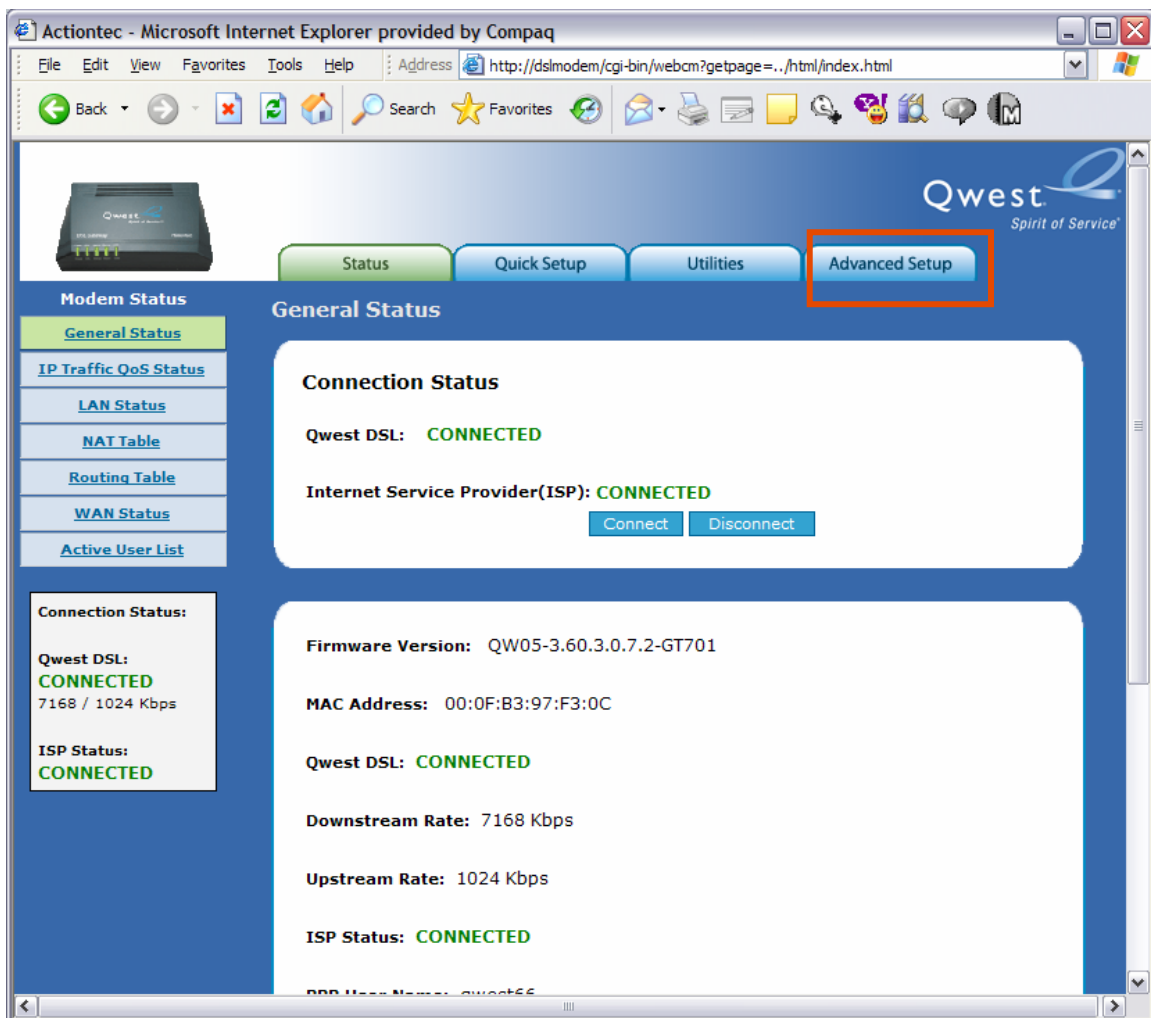


Qwest® Standard Modem: Actiontec® GT701

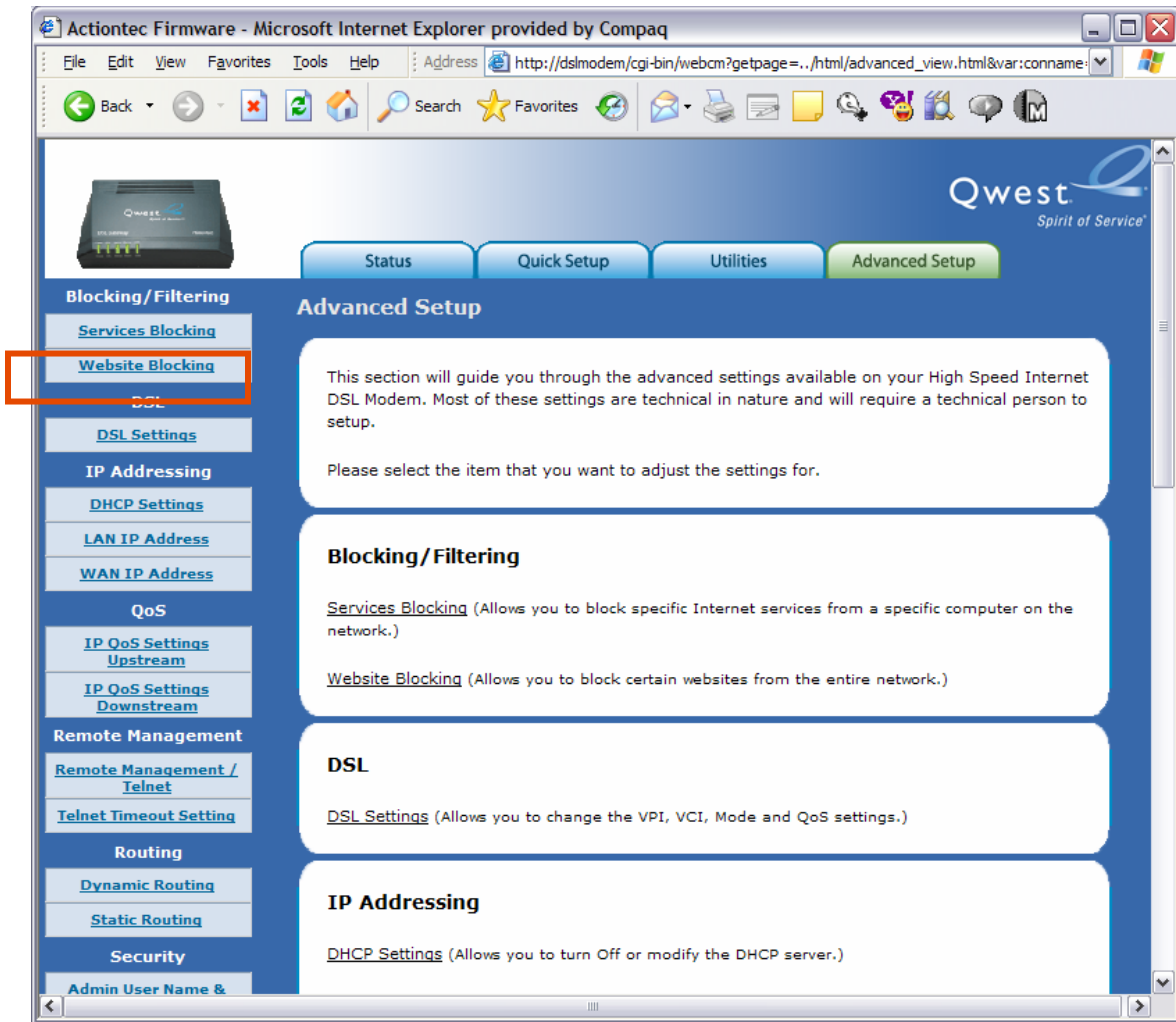
How to Configure Web Site Blocking

By enabling Web site blocking on your Qwest® Standard Modem: Actiontec® GT701, you can prohibit access to defined Web sites.

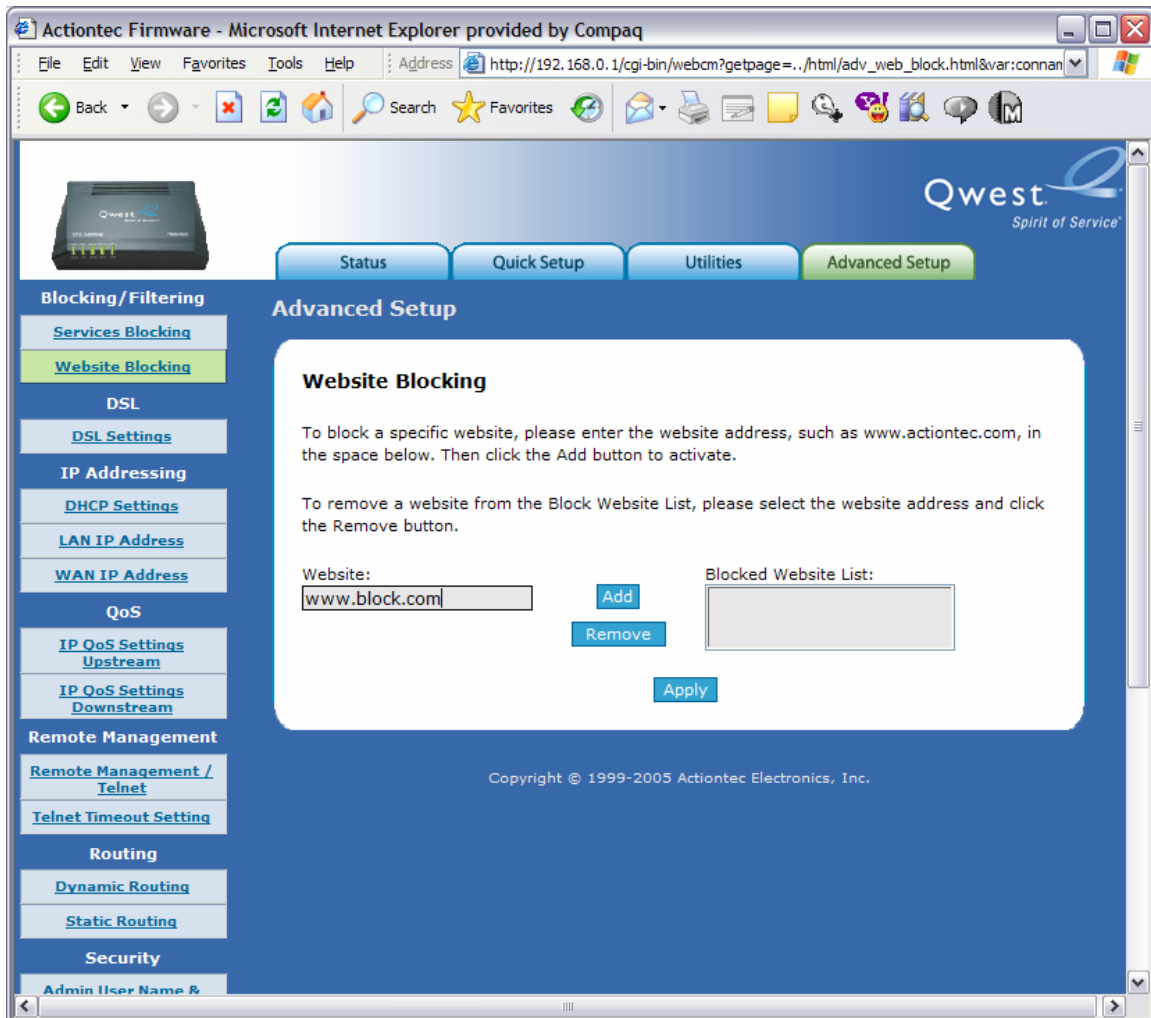
1. Enter "192.168.0.1" in the Address bar of your Internet browser, which automatically opens the "General Status" page. Select the **Advanced Setup** tab.



2. Select the **Website Blocking** link.



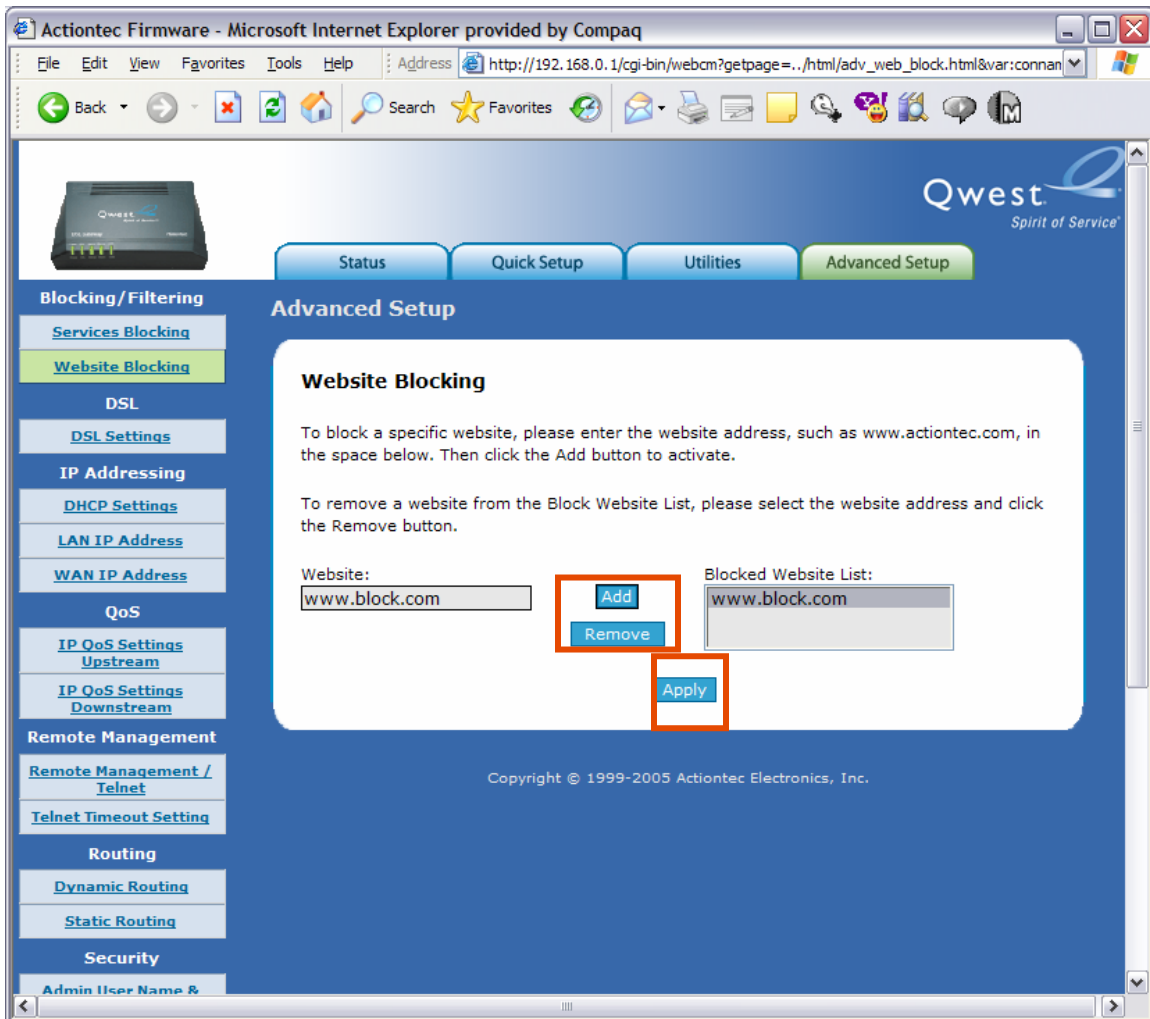
3. To block a Web site, type in the Web site address in the **Website** field.



4. Select the **Add** button to add the Web site to the **Blocked Website List** field. The blocked Web site can't be accessed from any computer on your network.

To allow access to the Web site, select the Web site address in the **Blocked Website List** field. Select the **Remove** button.

Then, select **Apply** to save your settings.



5. A “Thank You” page appears briefly. After configuration is complete, you’re automatically redirected to the “Website Blocking” page.

