

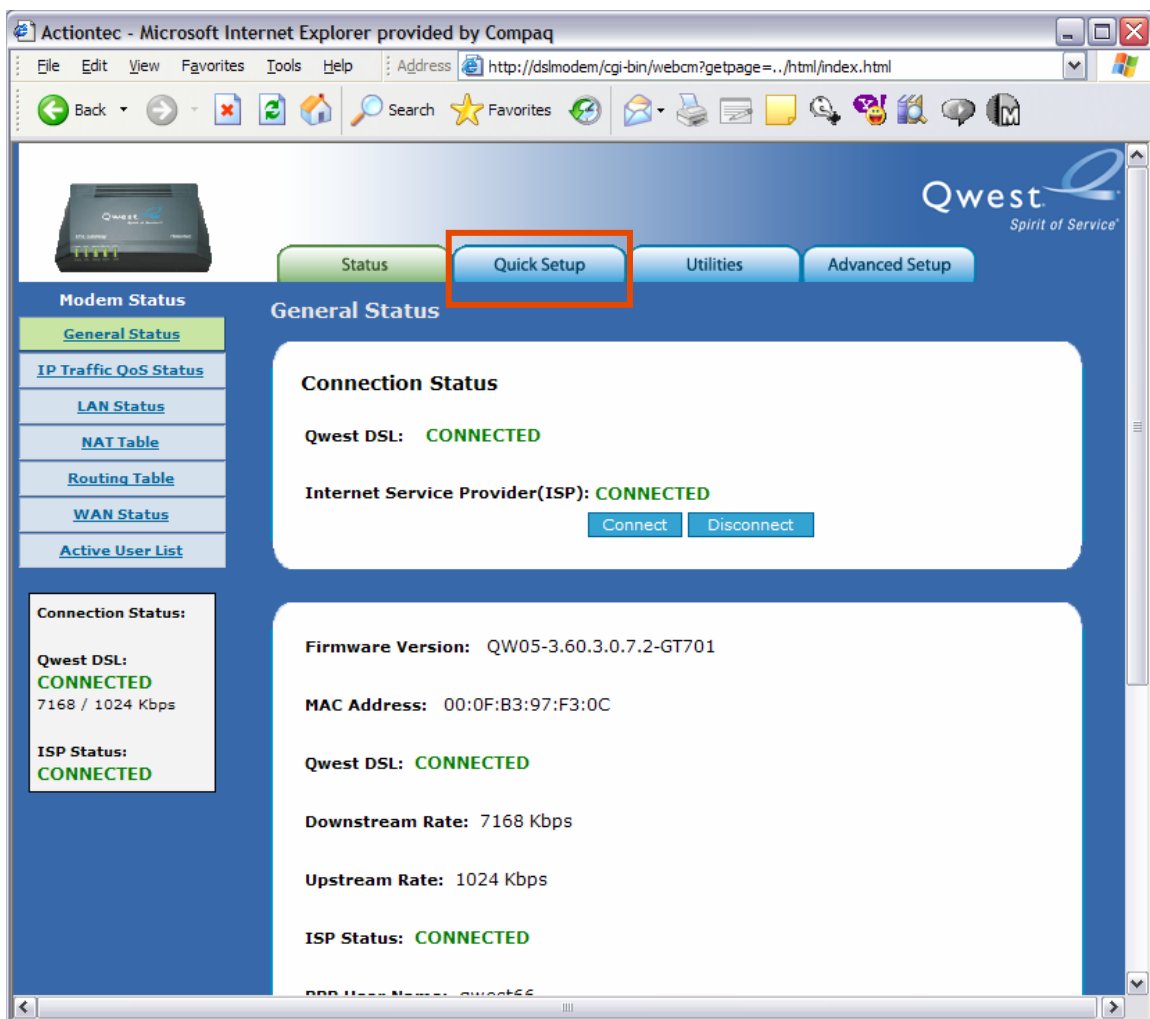
Qwest® Standard Modem: Actiontec® GT701

How to Configure Transparent Bridging Using RFC 1483 Mode

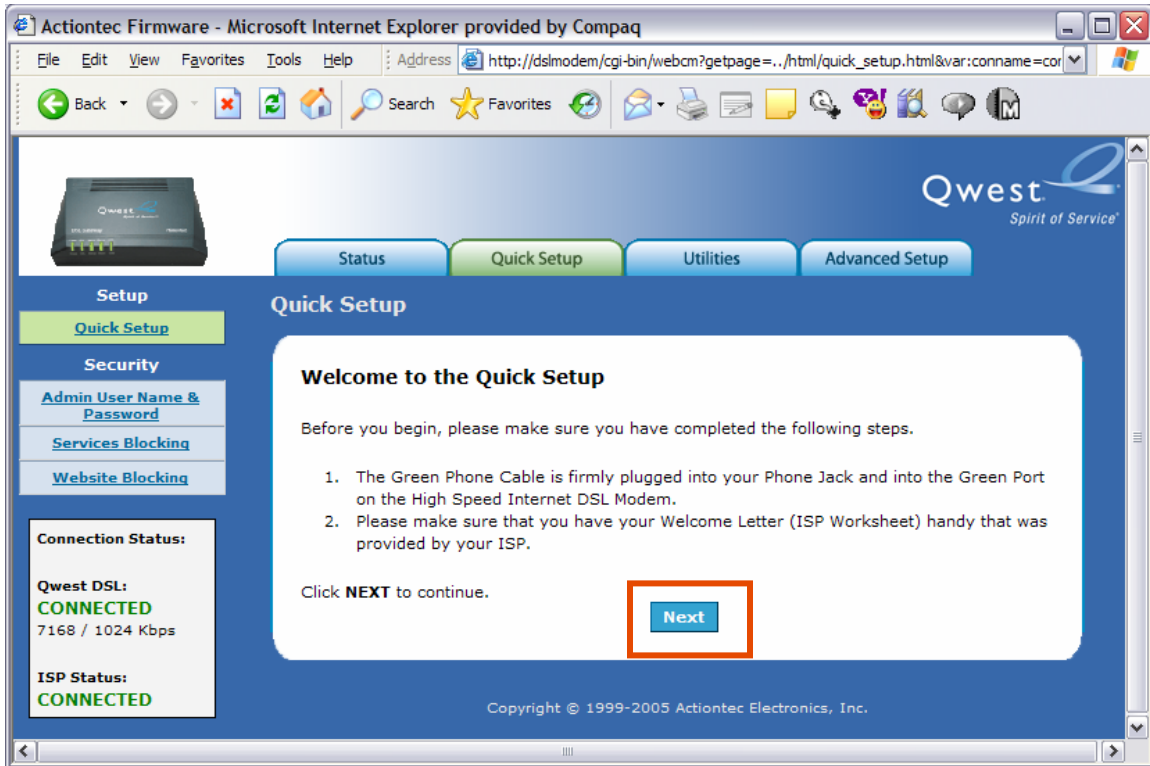
When using transparent bridging mode with the Qwest® Standard Modem: Actiontec® GT701:

- Your selected Internet Service Provider (ISP) must support transparent bridging.
- The routing features of your Qwest Standard Modem: Actiontec GT701 are inactive while in bridging mode.

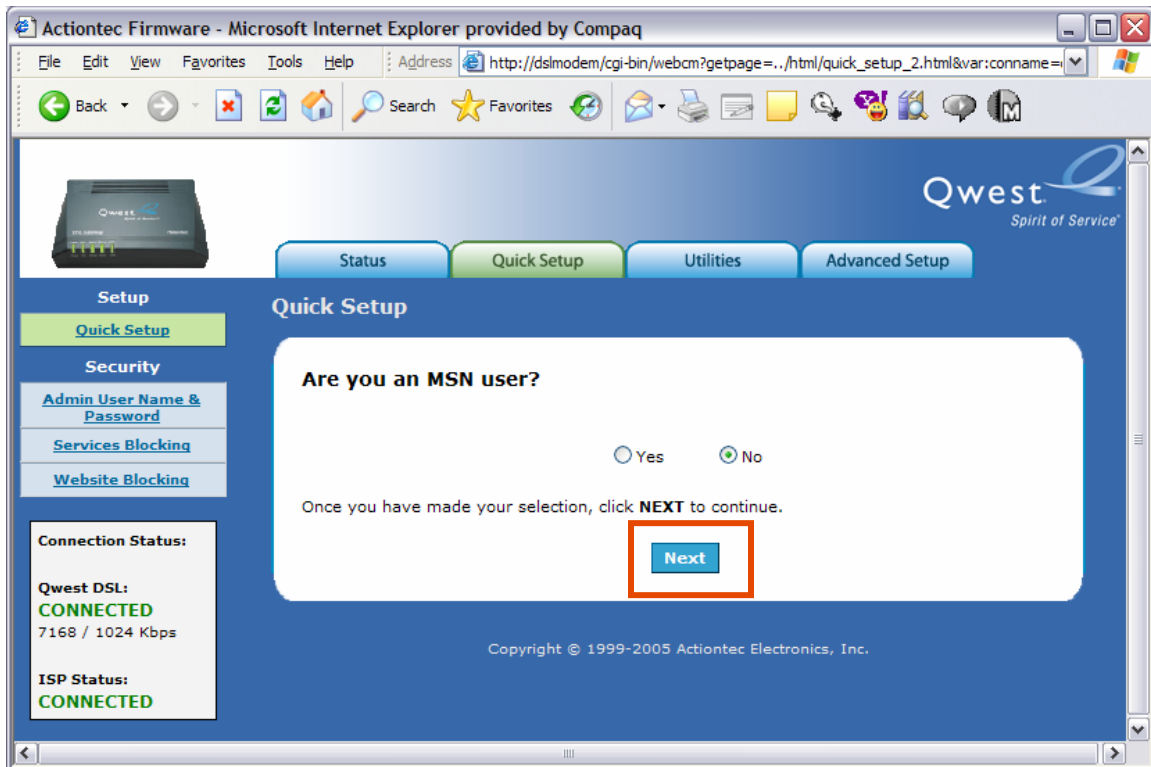
1. Enter "192.168.0.1" in the Address bar of your Internet browser, which automatically opens the "General Status" page. Select the **Quick Setup** tab.



2. Select the **Next** button.



3. Select the **No** radio button. Then, select **Next**.



4. Select the **RFC 1483 Transparent Bridging** radio button.

Actiontec - Microsoft Internet Explorer provided by Compaq

Address: http://192.168.0.1/cgi-bin/webcm

Qwest Spirit of Service®

Status Quick Setup Utilities Advanced Setup

Setup

Quick Setup

Security

Admin User Name & Password

Services Blocking

Website Blocking

Connection Status:

Qwest DSL:
CONNECTED
7168 / 1024 Kbps

ISP Status:
CONNECTED

Quick Setup

Please follow the steps below.

1. Select the item below that is utilized by your ISP.

PPPoA

PPPoE

RFC 1483 Transparent Bridging

RFC 1483 via DHCP

RFC 1483 via Static IP

Encapsulation RFC 1483 Bridged RFC 1483 Routed

2. Enter your PPP User Name and Password. (PPPoA and PPPoE ONLY)

PPP User Name: Not Applicable

PPP Password: Not Applicable

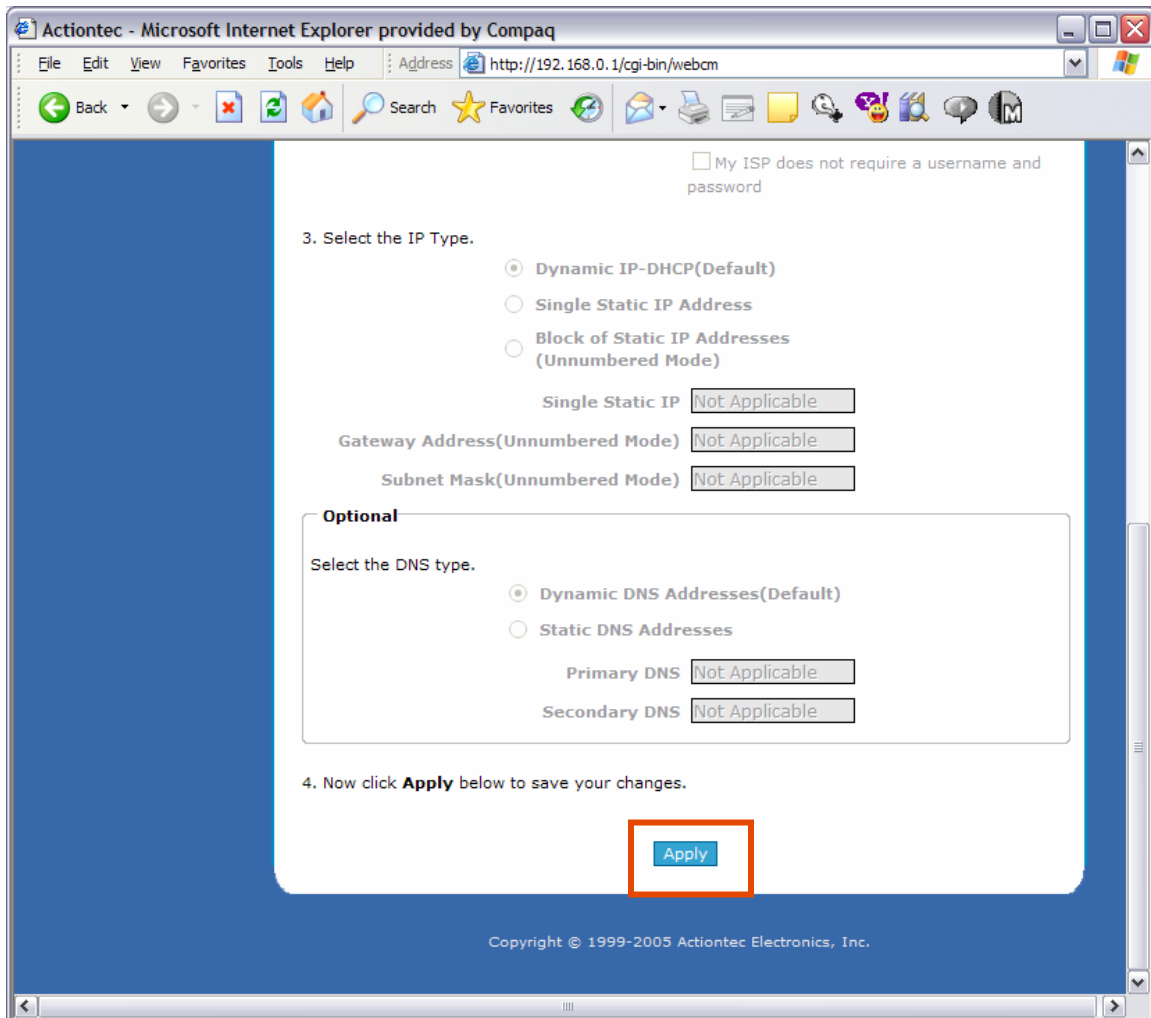
My ISP does not require a username and password

3. Select the IP Type.

Dynamic IP-DHCP(Default)

Single Static IP Address

5. Scroll down and select **Apply** to save your settings.



6. A “Thank You” page appears briefly.

After configuration is complete, you’re automatically redirected to the “Quick Setup” page.

All routing features of the Qwest Standard Modem: Actiontec GT701 are disabled in bridging mode.

