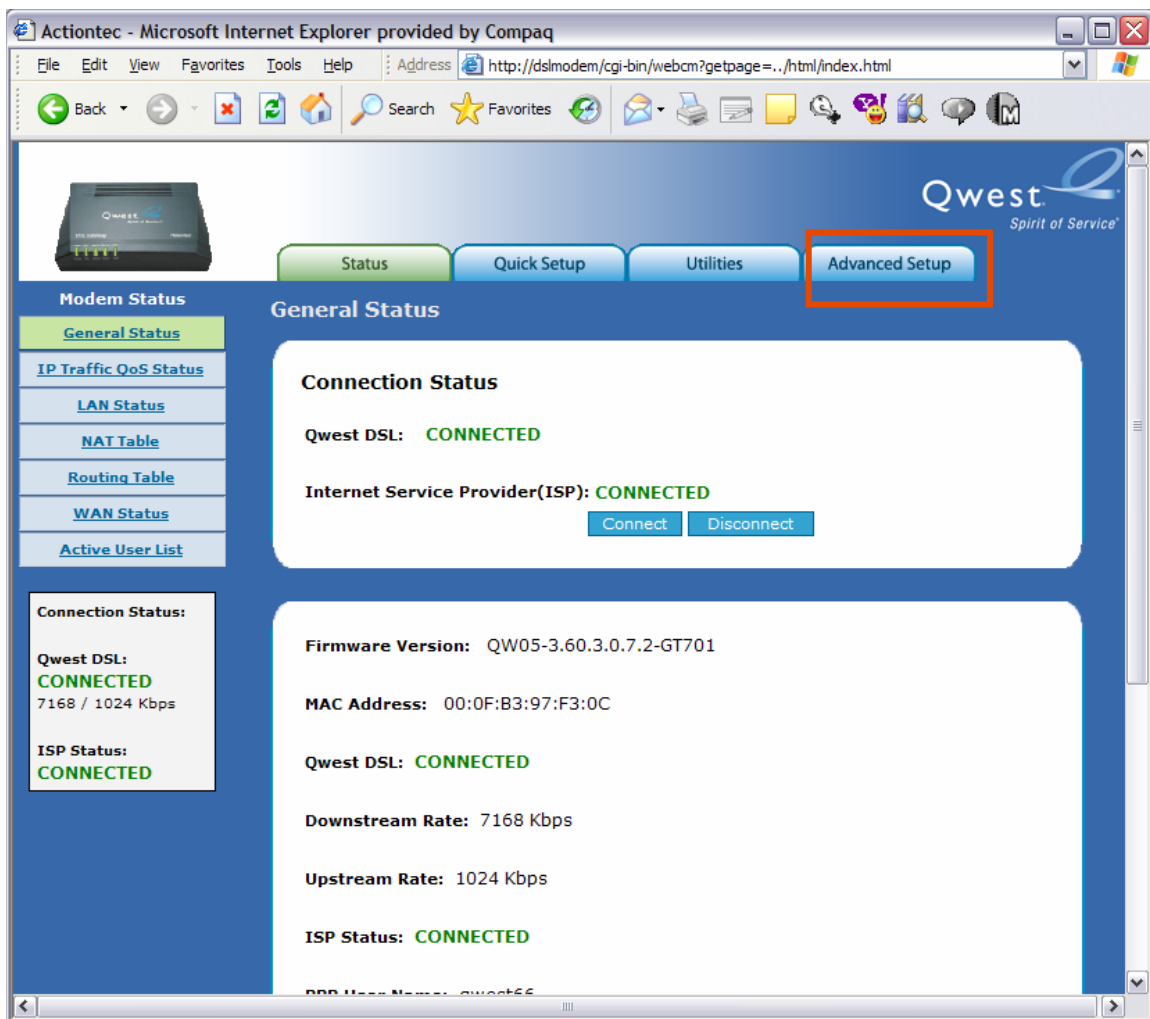


Qwest® Standard Modem: Actiontec® GT701

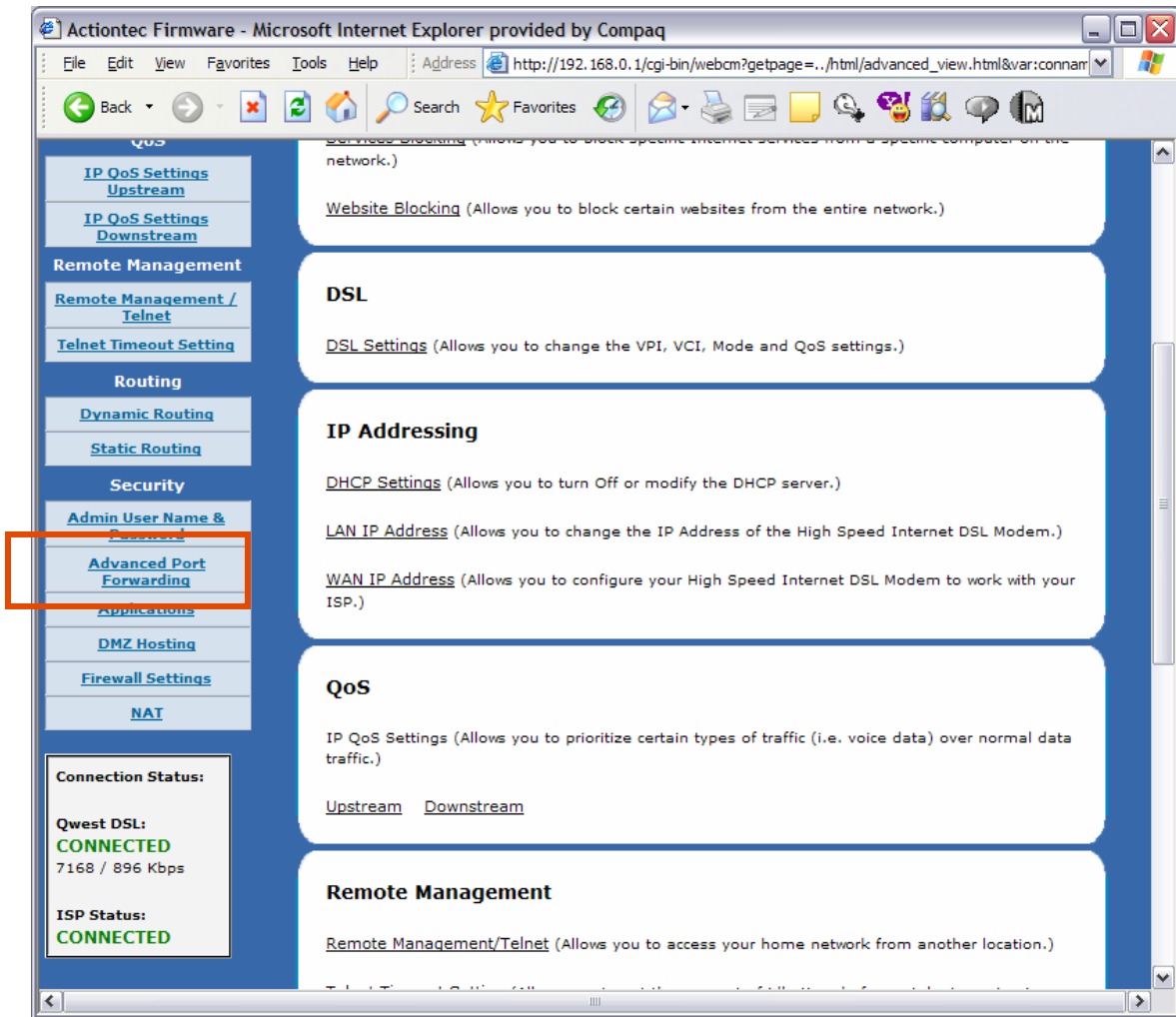
Port Forwarding IP Ports

To enable desired Internet applications on specified devices on the LAN, you must implement port forwarding of the IP ports.

1. Enter "192.168.0.1" in the Address bar of your Internet browser, which automatically opens the "General Status" page. Select the **Advanced Setup** tab.

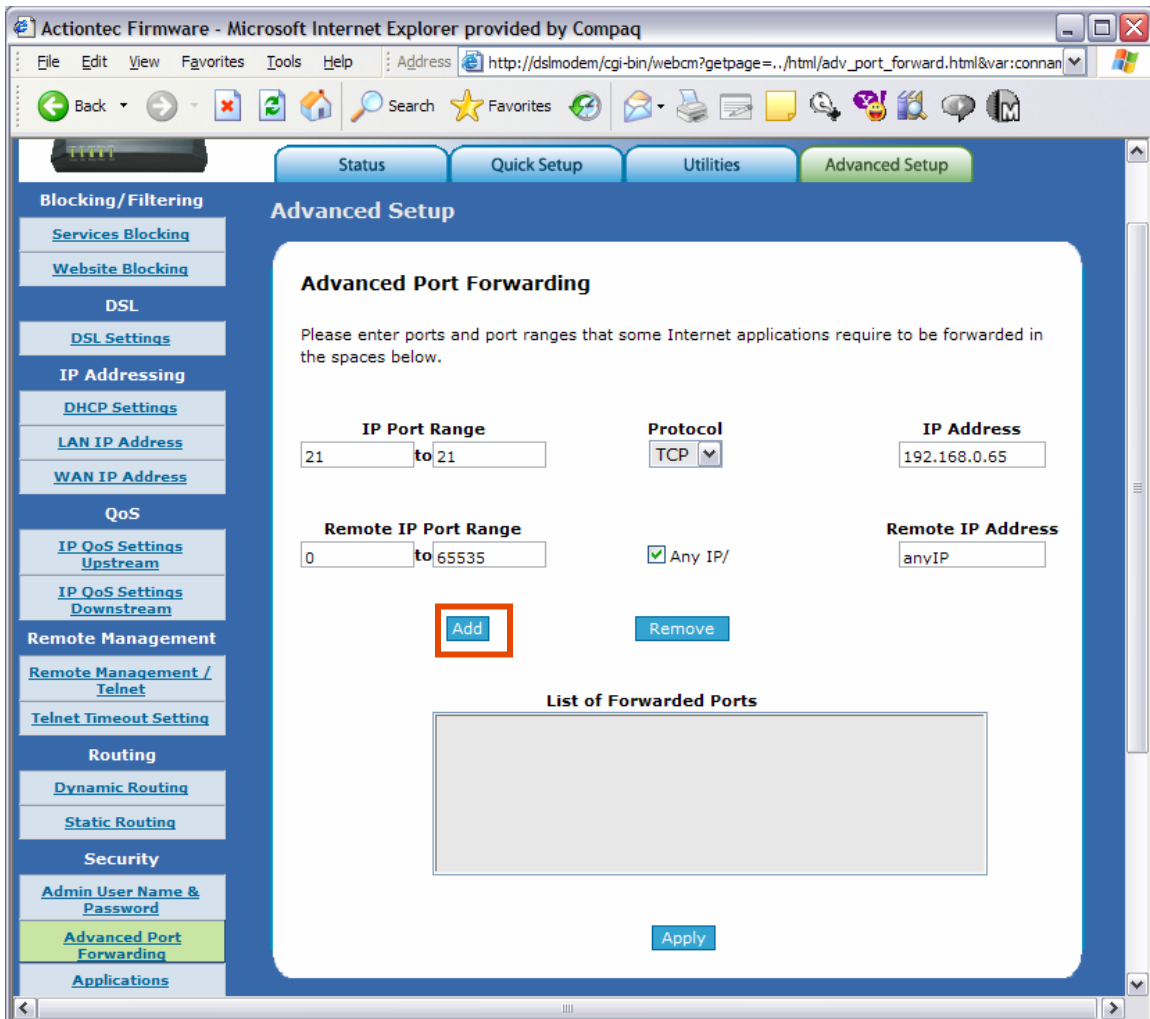


2. Scroll down and select the **Advanced Port Forwarding** link.



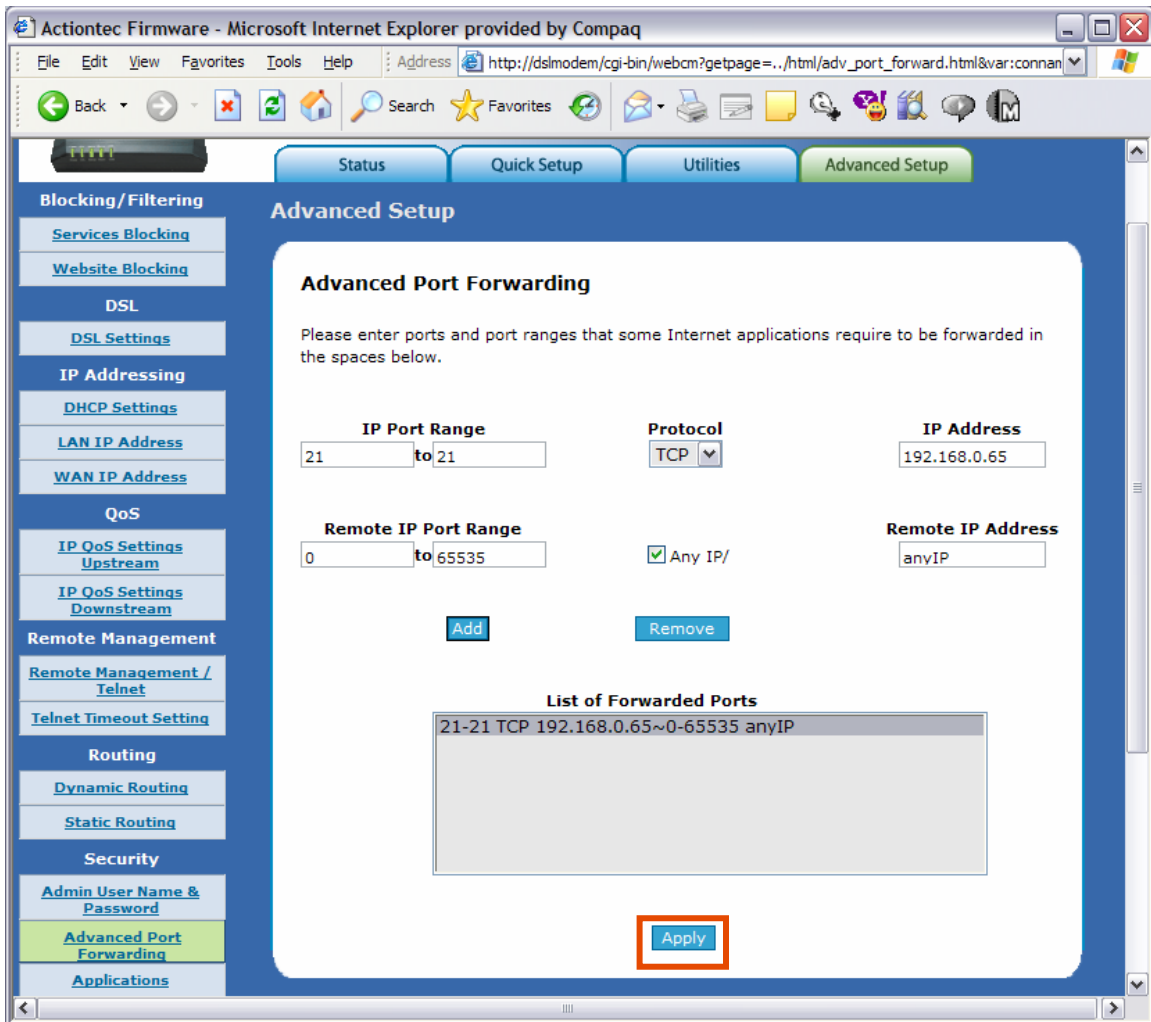
3. Type the start and finish IP ports required for your application in both **IP Port Range** fields. Select the **Protocol** from the drop-down menu. Then, enter the **IP Address** of the device on the LAN to forward the Ports.

Then, select the **Add** button.



4. Under the **List of Forwarded Ports** section, the added entries are displayed now.

Then, select **Apply** to save your settings.



5. A “Thank You” page appears briefly. After configuration is complete, you’re automatically redirected to the “Advanced Port Forwarding” page.

