

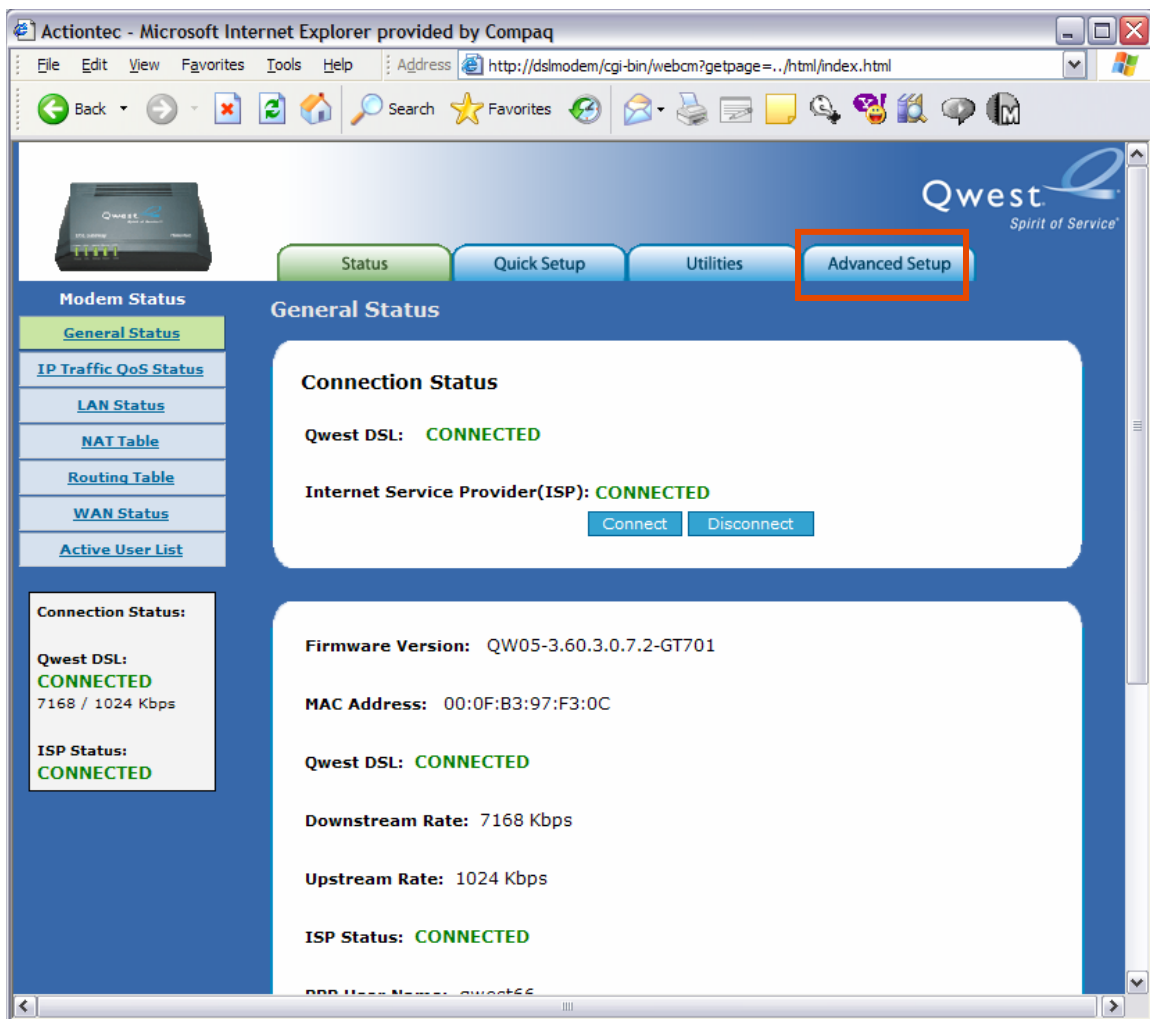
Qwest® Standard Modem: Actiontec® GT701

How to Disable NAT (Network Address Translation)

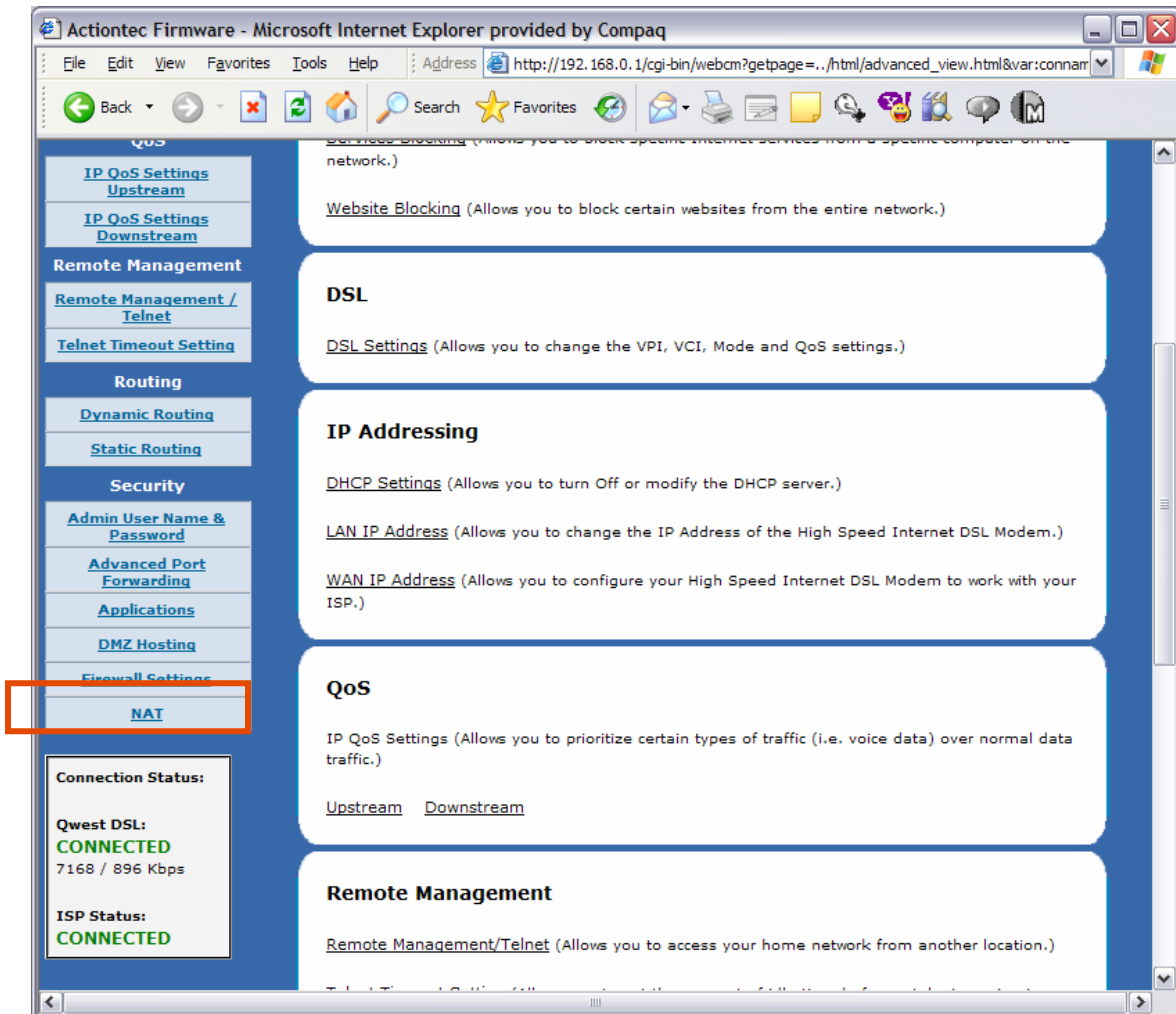
The Qwest® Standard Modem: Actiontec® GT701 allows you to disable NAT (Network Address Translation), if required.

Note: If using dynamic IP addressing, don't disable NAT unless instructed to do so by a networking professional.

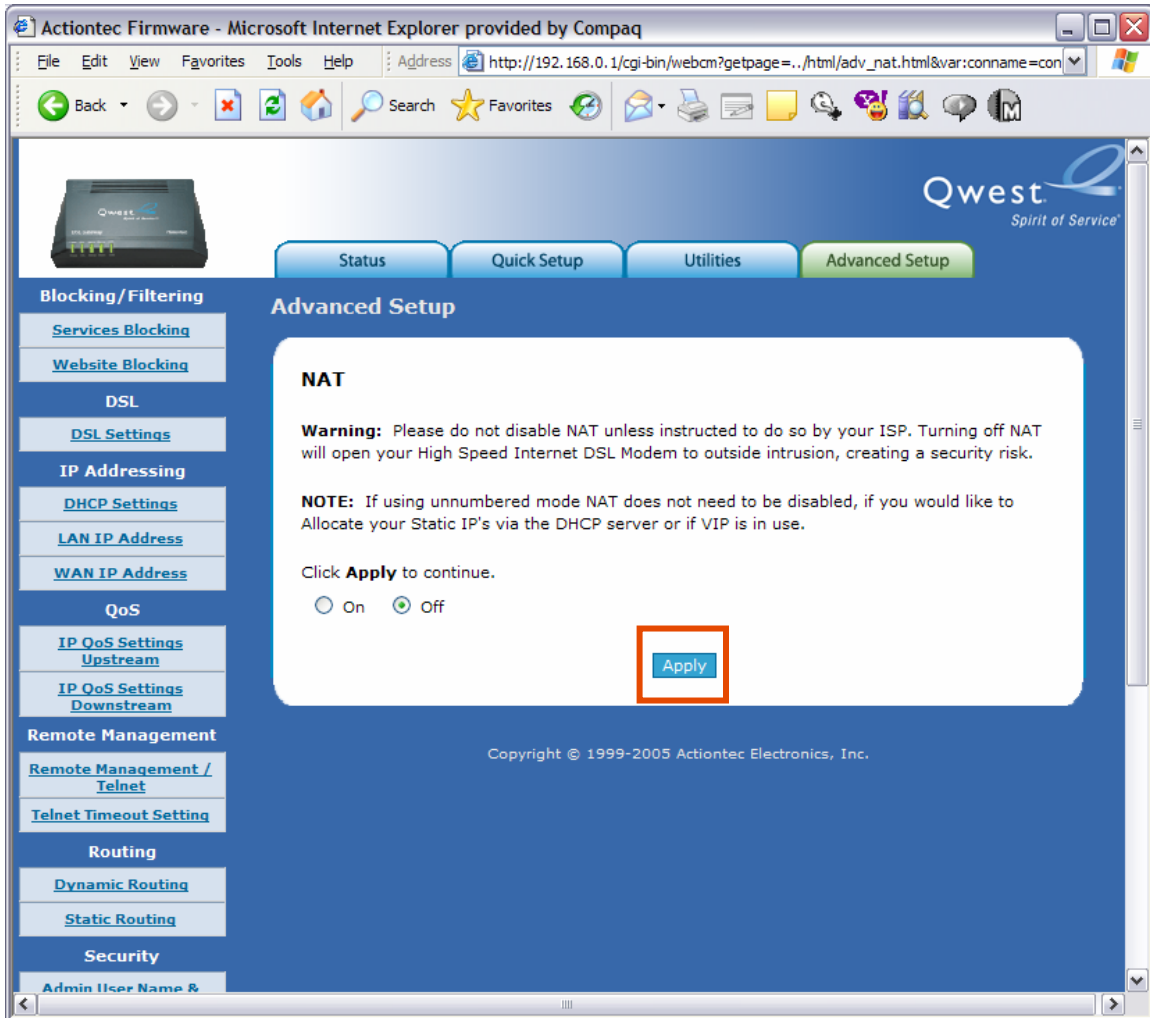
1. Enter "192.168.0.1" in the Address bar of your Internet browser, which automatically opens the "General Status" page. Select the **Advanced Setup** tab.



2. Scroll down and select the **NAT** link.



- To disable NAT, select the **Off** radio button. Then, select **Apply**.



4. A “Thank You” page appears briefly. After configuration is complete, you’re automatically redirected to the “NAT” page.

