

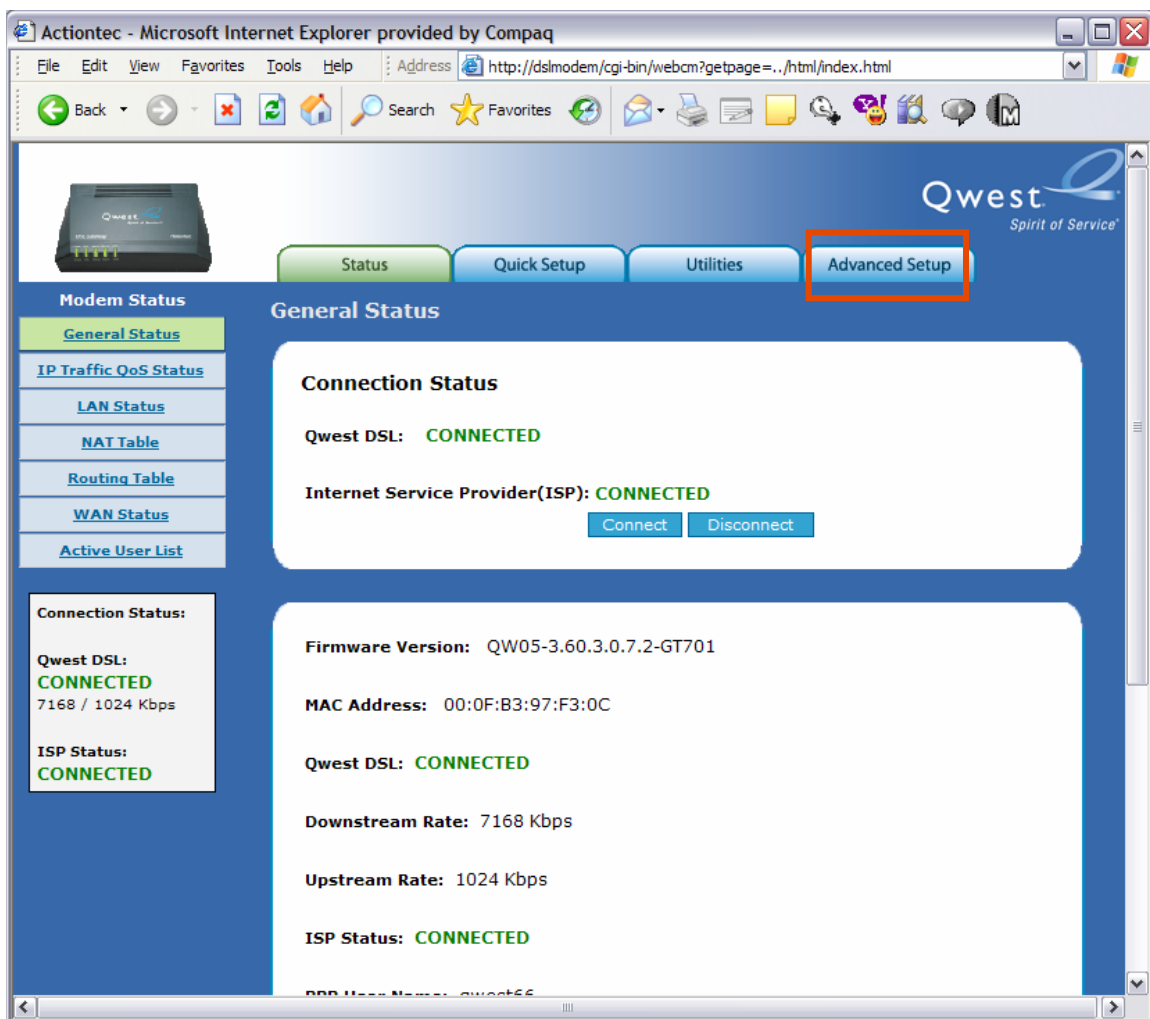
Qwest® Standard Modem: Actiontec® GT701

How to Change the LAN IP Address

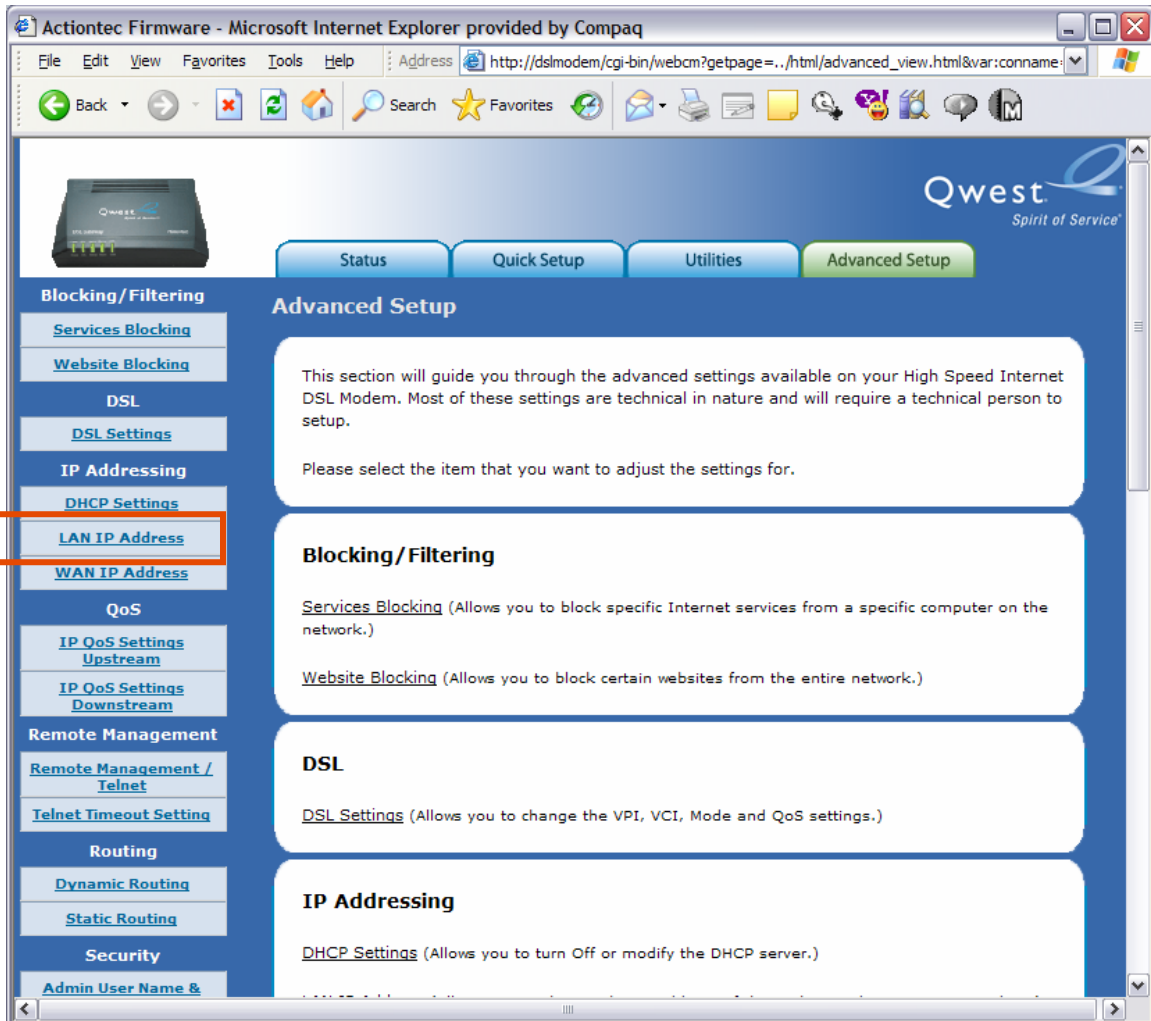
The Qwest® Standard Modem: Actiontec® GT701 allows you to change the LAN IP address and the subnet mask of the device on the LAN.

Note: You must update the DHCP server allocated addresses when changing the LAN IP address of the Qwest Standard Modem: Actiontec GT701.

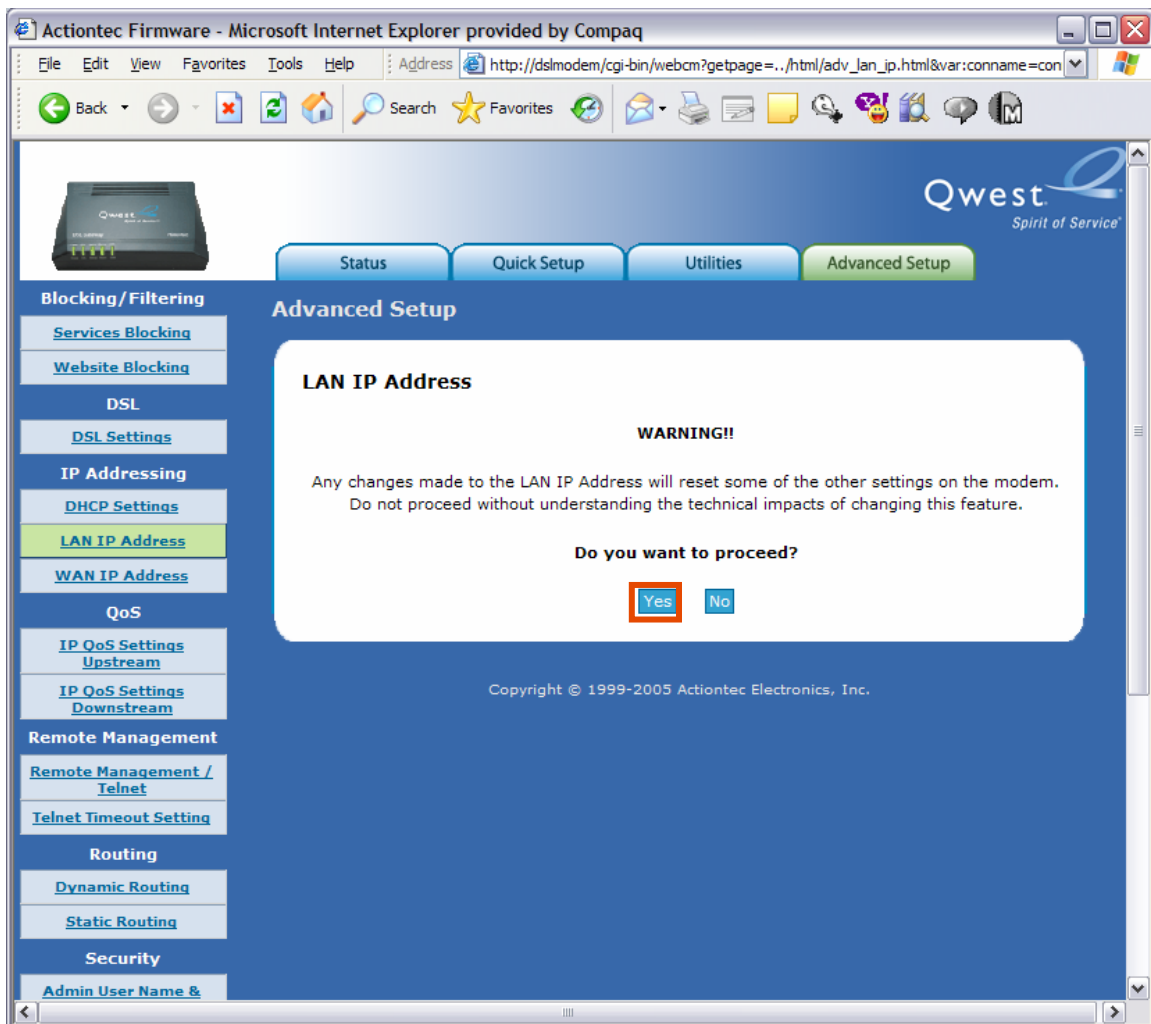
1. Enter "192.168.0.1" in the Address bar of your Internet browser, which automatically opens the "General Status" page. Select the **Advanced Setup** tab.



2. Select the **LAN IP Address** link.



3. Select the **Yes** button in the **LAN IP Address** section.

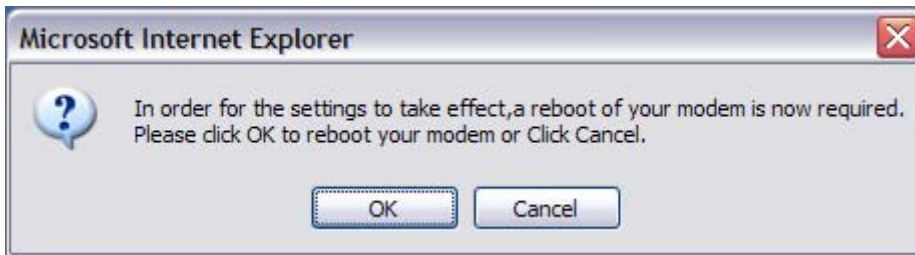


4. Type in the desired IP in the **Modem IP Address** field. If required, you can type in the subnet mask in the **Modem Subnet Mask** field.

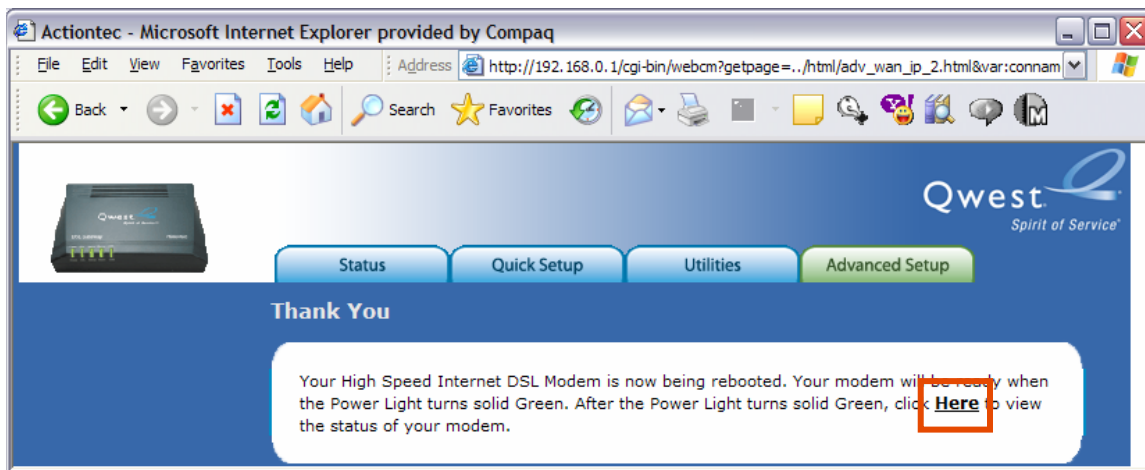
Then, select the **Apply & Reboot** button.



5. Select the **OK** button to reboot your Qwest Standard Modem: Actiontec GT701.



6. When the power light is solid green on your Qwest Standard Modem: Actiontec GT701, select the **Here** link.



Note: We recommend making record of the changed LAN IP address on your Qwest Standard Modem: Actiontec GT701.