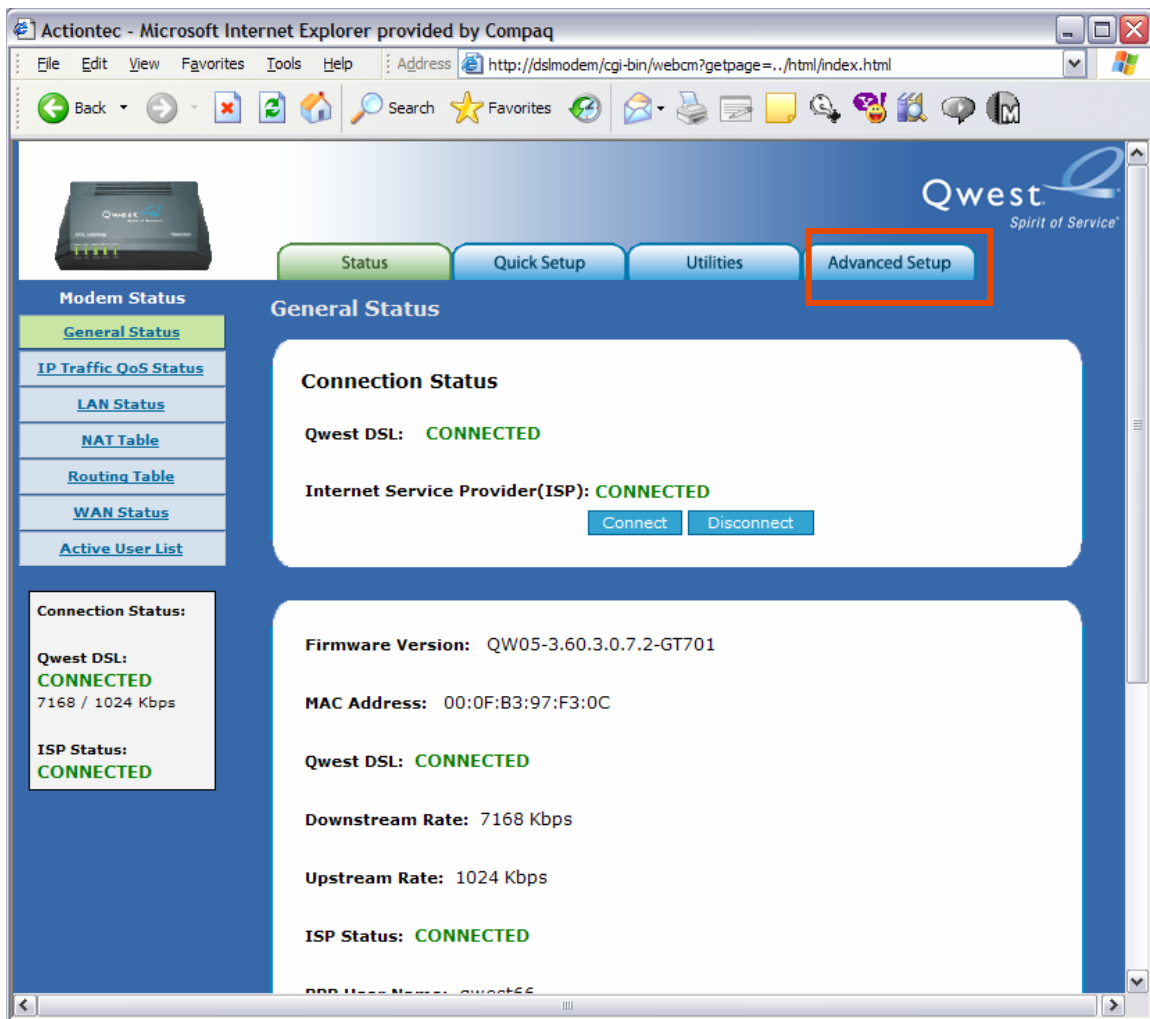


Qwest® Standard Modem: Actiontec® GT701

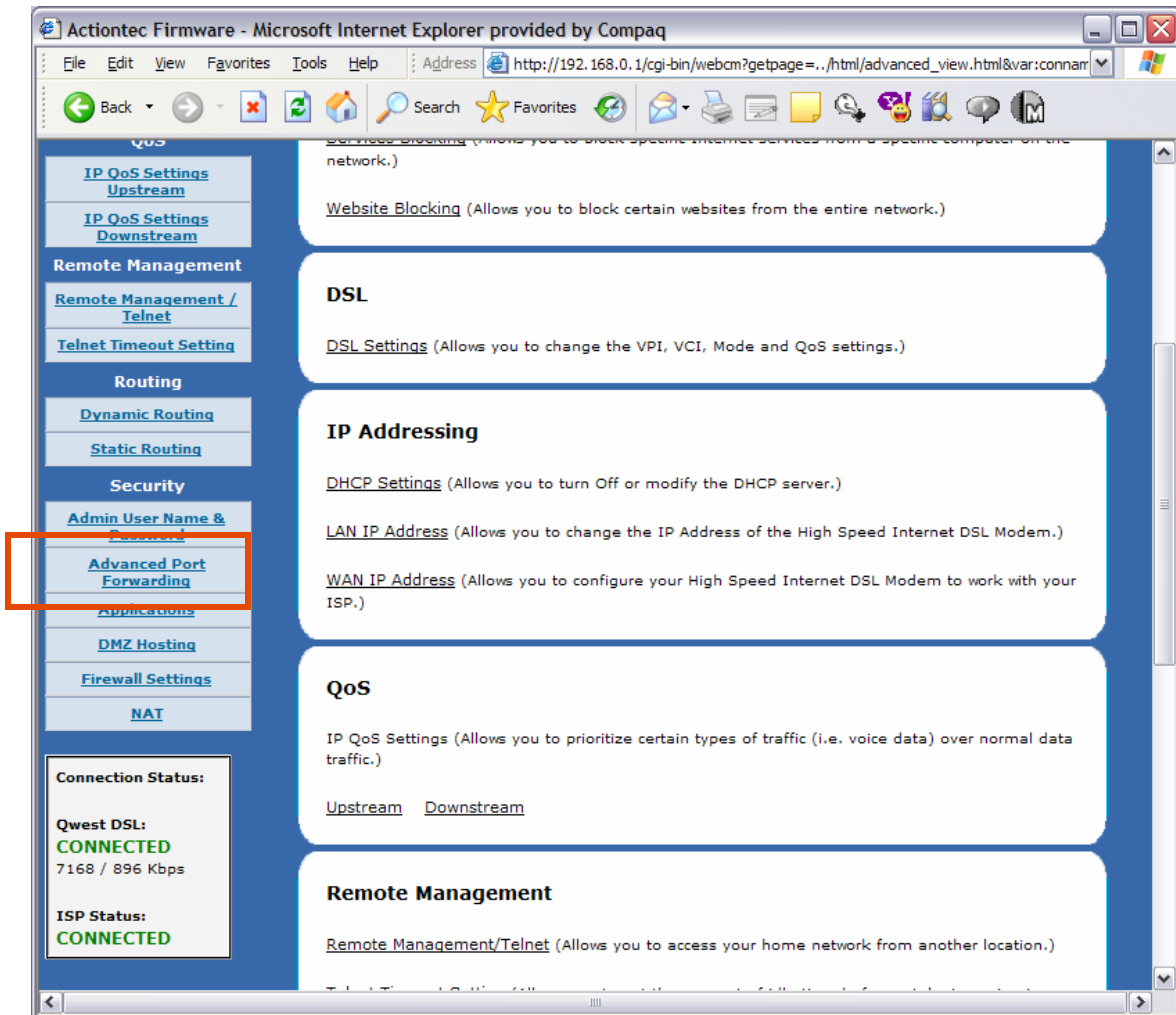
How to Configure Port Forwarding Port 80 for Web Hosting

To host a Web server on a privately allocated DHCP address, you must implement port forwarding of IP port 80.

1. Enter "192.168.0.1" in the Address bar of your Internet browser, which automatically opens the "General Status" page. Select the **Advanced Setup** tab.



2. Scroll down and select the **Advanced Port Forwarding** link.



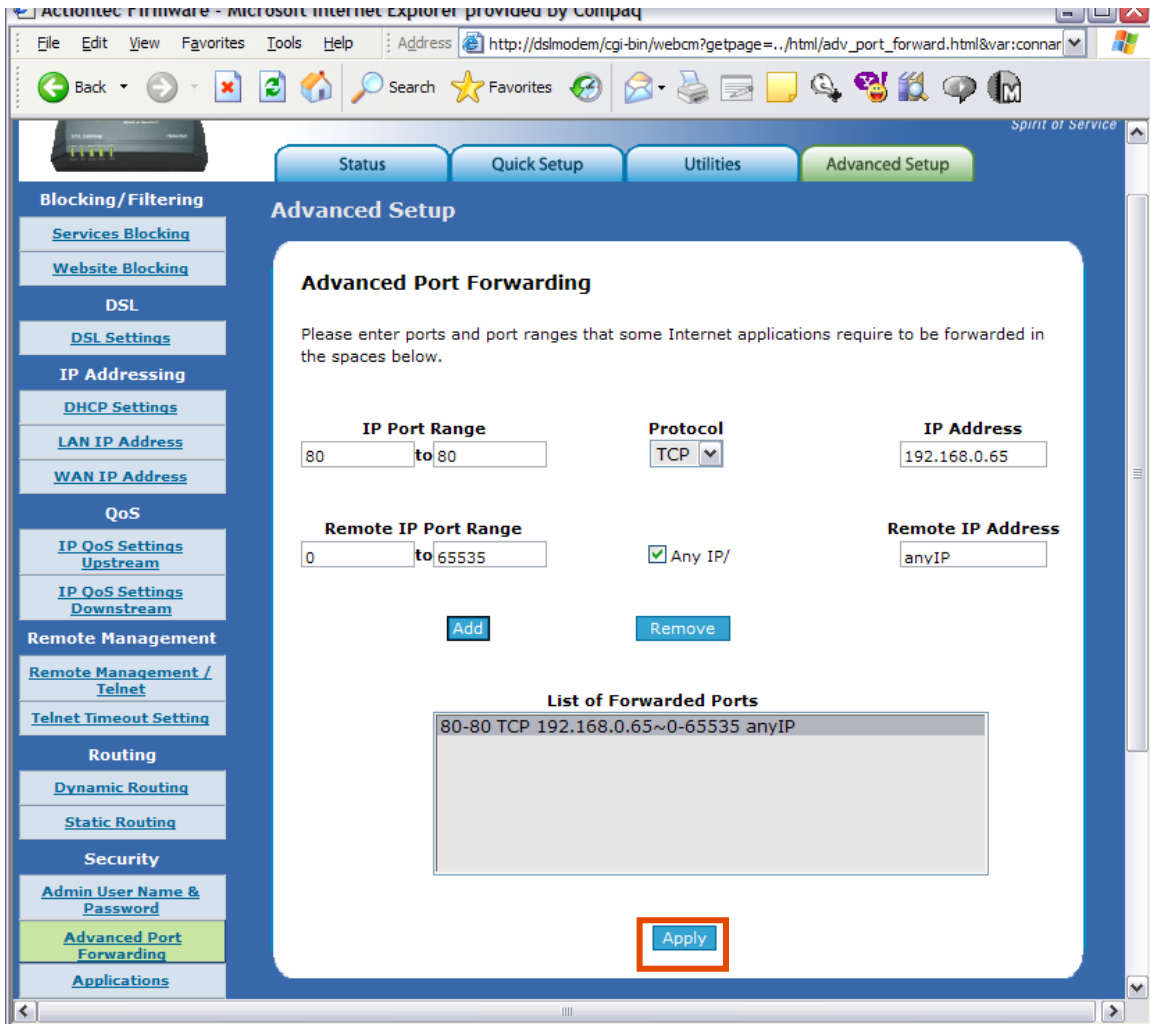
3. Type "80" in both **IP Port Range** fields. Enter the **IP Address** of the Web server on the LAN to forward the Ports.

Then, select the **Add** button.

The screenshot shows a web browser window displaying the 'Advanced Setup' page for 'Advanced Port Forwarding'. The page has a blue header with navigation tabs: 'Status', 'Quick Setup', 'Utilities', and 'Advanced Setup'. A left sidebar contains a tree view of settings categories: 'Blocking/Filtering' (Services Blocking, Website Blocking), 'DSL' (DSL Settings), 'IP Addressing' (DHCP Settings, LAN IP Address, WAN IP Address), 'QoS' (IP QoS Settings Upstream, IP QoS Settings Downstream), 'Remote Management' (Remote Management / Telnet, Telnet Timeout Setting), 'Routing' (Dynamic Routing, Static Routing), 'Security' (Admin User Name & Password, Advanced Port Forwarding, Applications). The main content area is titled 'Advanced Port Forwarding' and includes the instruction: 'Please enter ports and port ranges that some Internet applications require to be forwarded in the spaces below.' The form contains the following fields: 'IP Port Range' (80 to 80), 'Protocol' (TCP), 'IP Address' (192.168.0.65), 'Remote IP Port Range' (0 to 65535), 'Any IP/' (checked), and 'Remote IP Address' (anyIP). Below these fields are 'Add' and 'Remove' buttons. At the bottom of the form is an 'Apply' button. A section titled 'List of Forwarded Ports' contains an empty table.

4. Under the **List of Forwarded Ports** section, the added entries are displayed now.

Then, select **Apply** to save your settings.



5. A “Thank You” page appears briefly. After configuration is complete, you’re automatically redirected to the “Advanced Port Forwarding” page.

