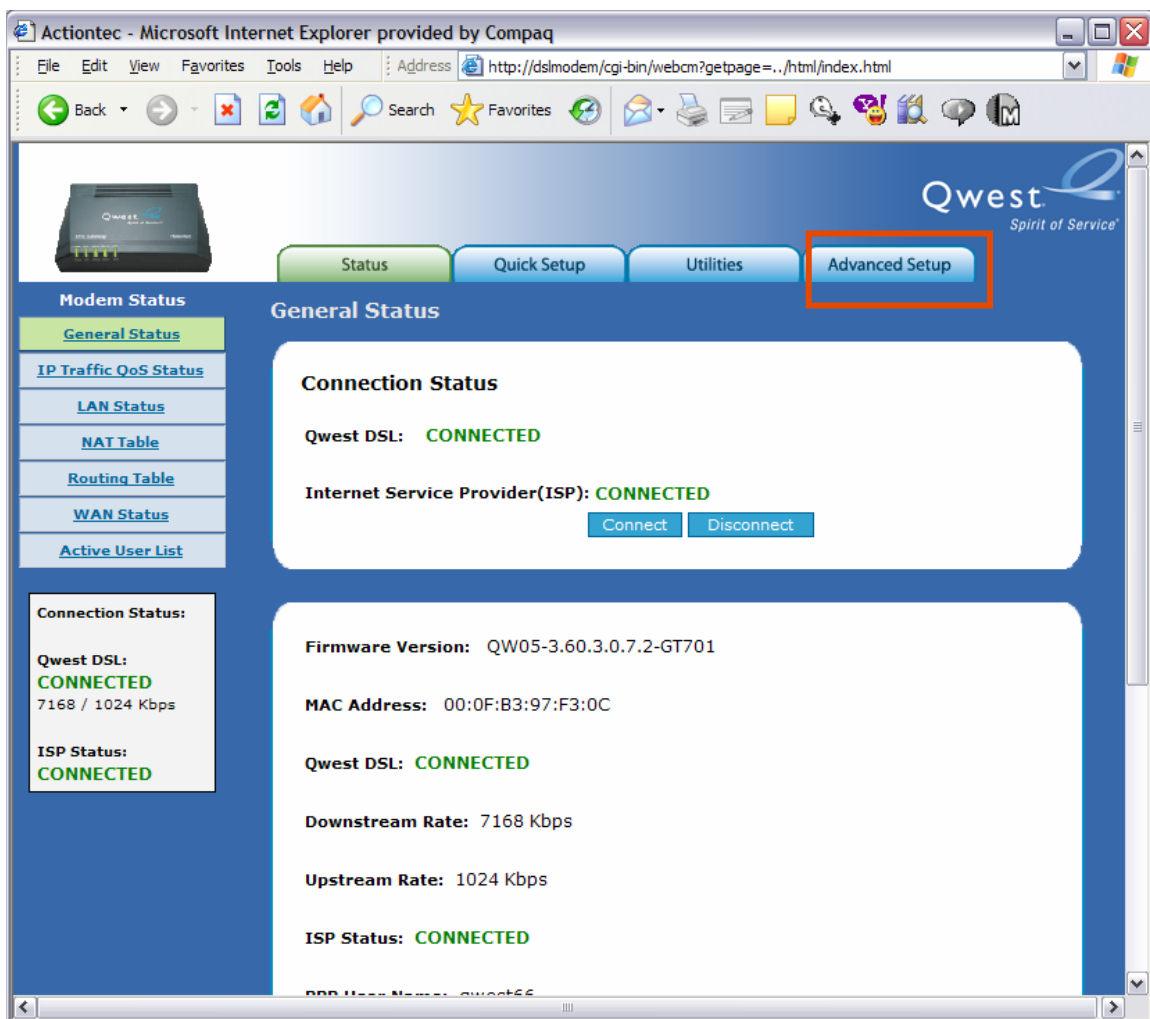


## Qwest® Standard Modem: Actiontec® GT701

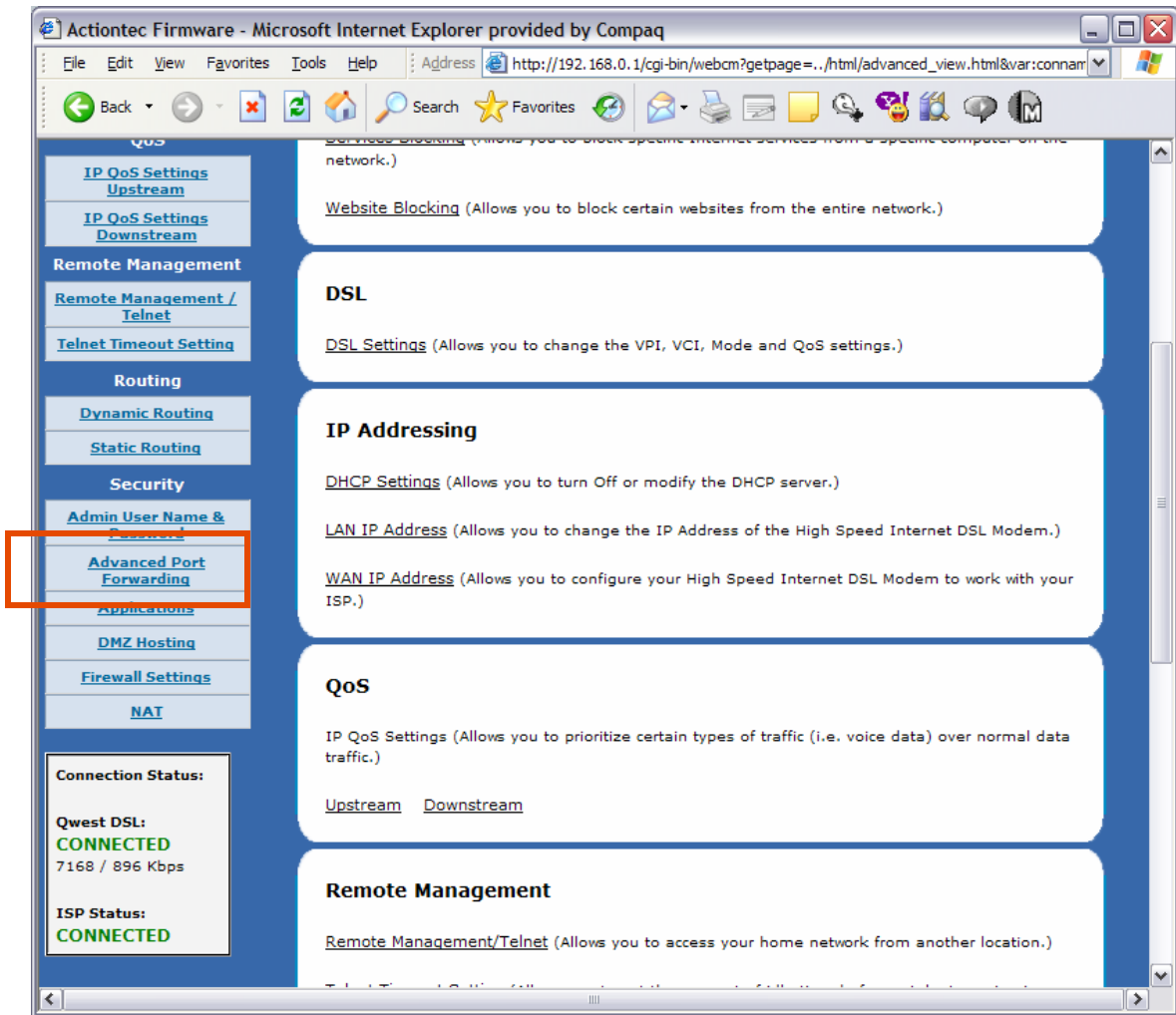
### How to Configure Port Forwarding Port 21 for FTP Hosting

To host an FTP server on a privately allocated DHCP address, you must implement port forwarding of IP port 21.

1. Enter "192.168.0.1" in the Address bar of your Internet browser, which automatically opens the "General Status" page. Select the **Advanced Setup** tab.

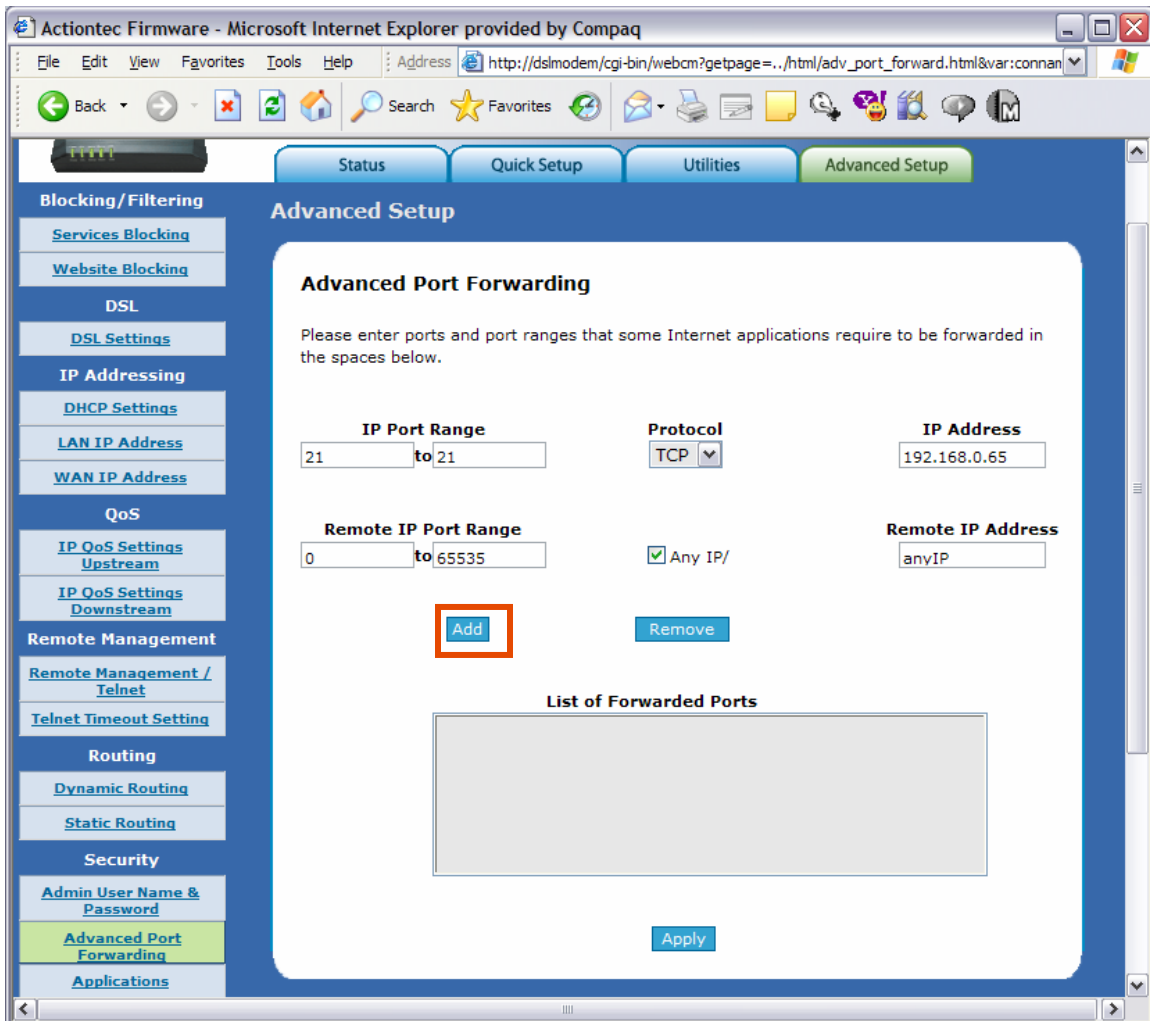


2. Scroll down and select the **Advanced Port Forwarding** link.



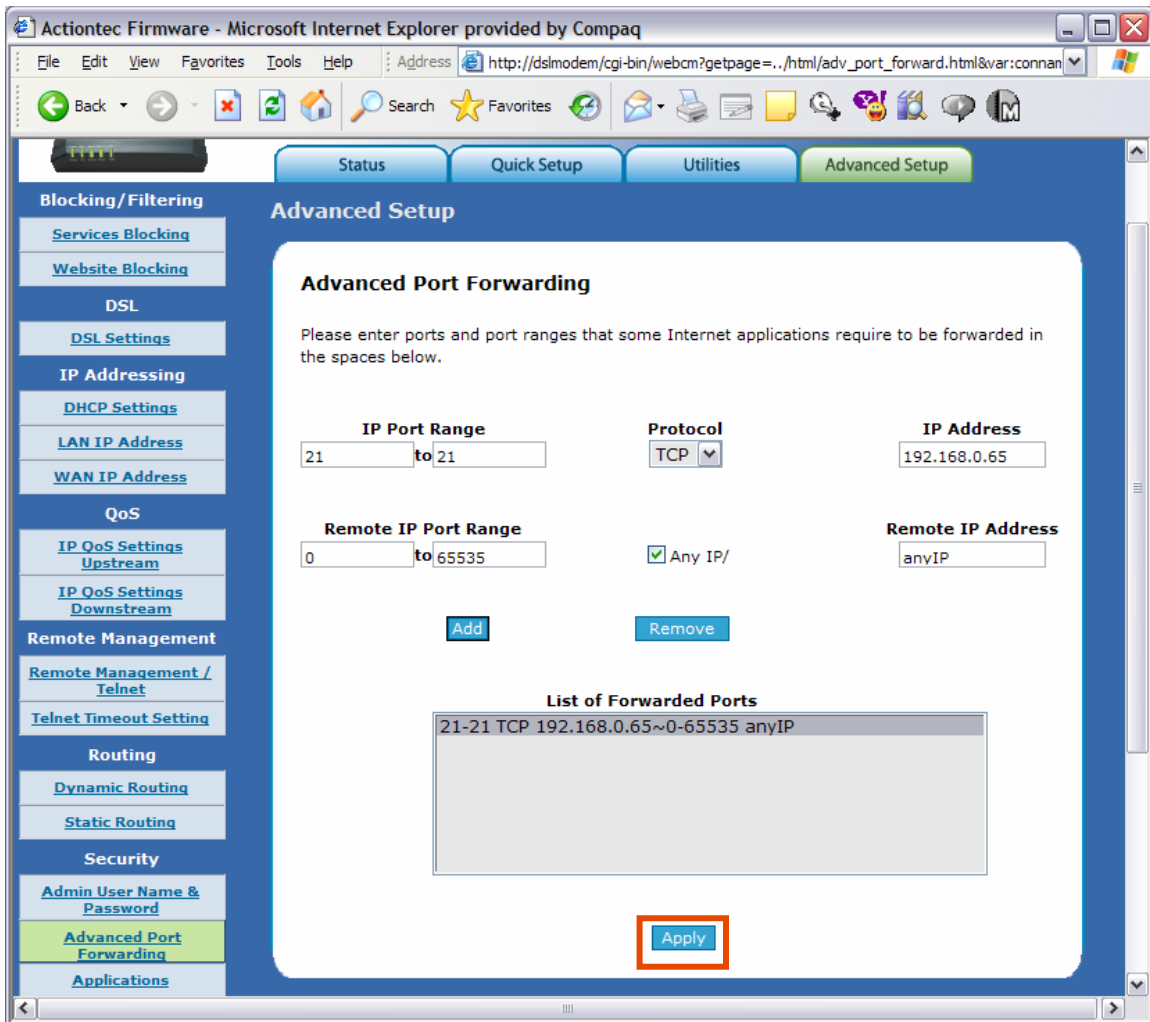
3. Type "21" in both **IP Port Range** fields. Enter the **IP Address** of the modem you want to configure for port forwarding.

Then, select the **Add** button.



4. Under the **List of Forwarded Ports** section, the added entries are displayed now.

Then, select **Apply** to save your settings.



5. A “Thank You” page appears briefly. After configuration is complete, you’re automatically redirected to the “Advanced Port Forwarding” page.

