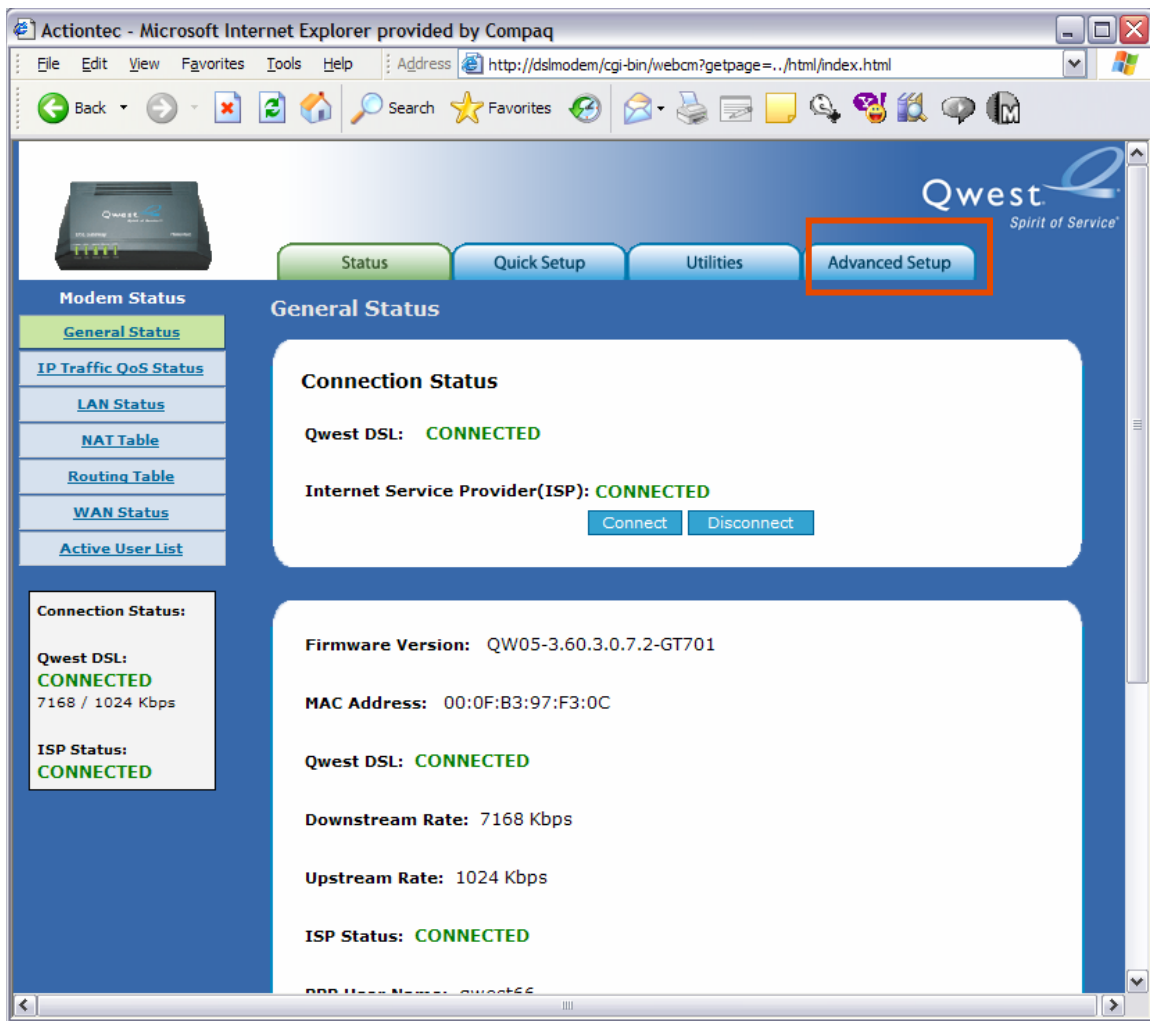


Qwest® Standard Modem: Actiontec® GT701

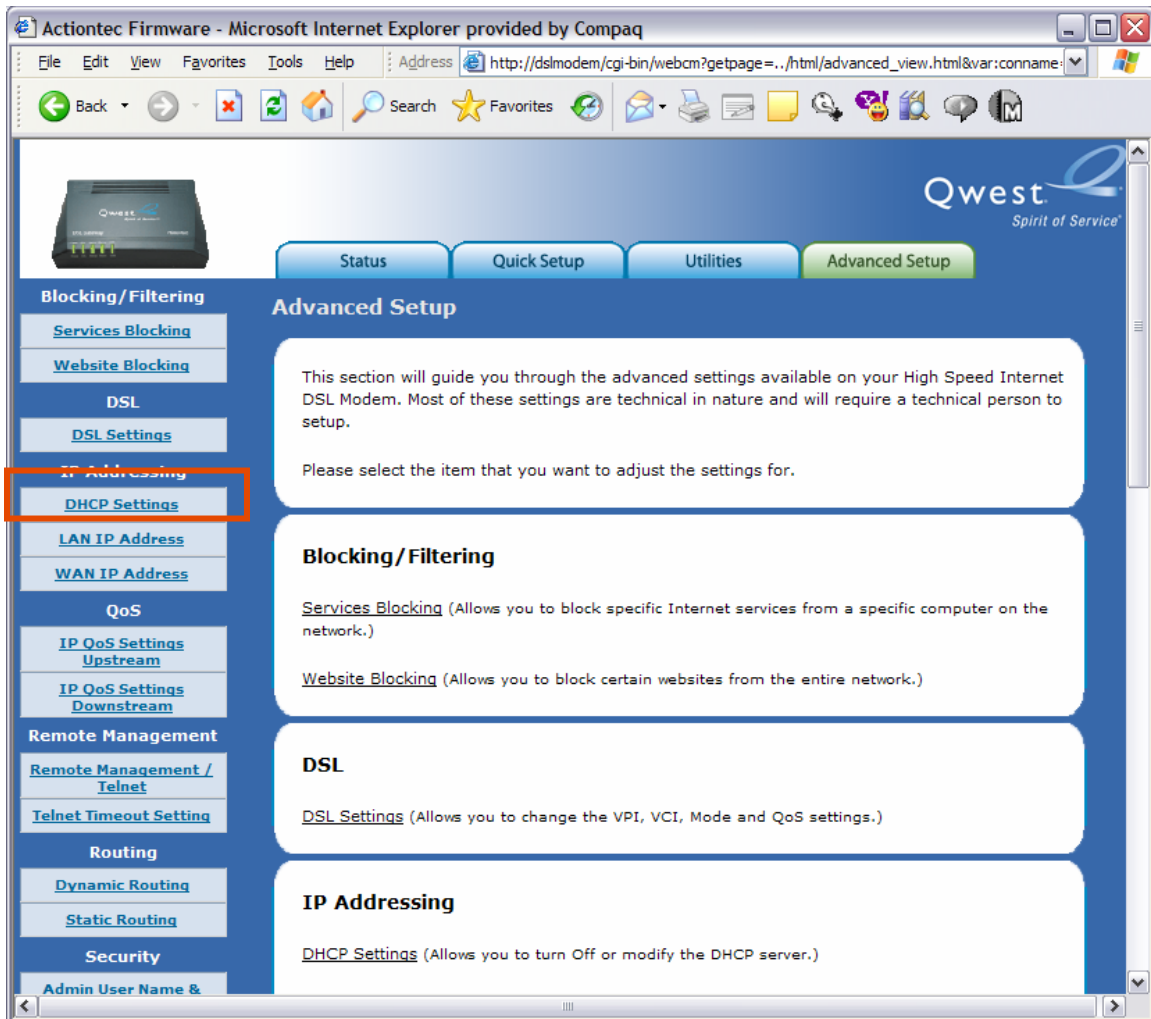
How to Modify the DHCP Server

To modify and seamlessly transition the DHCP Server on the Qwest® Standard Modem: Actiontec® GT701, you may:

- Turn off the DHCP Server, or
 - Modify the allocation addresses
1. Enter “192.168.0.1” in the Address bar of your Internet browser, which automatically opens the “General Status” page. Select the **Advanced Setup** tab.

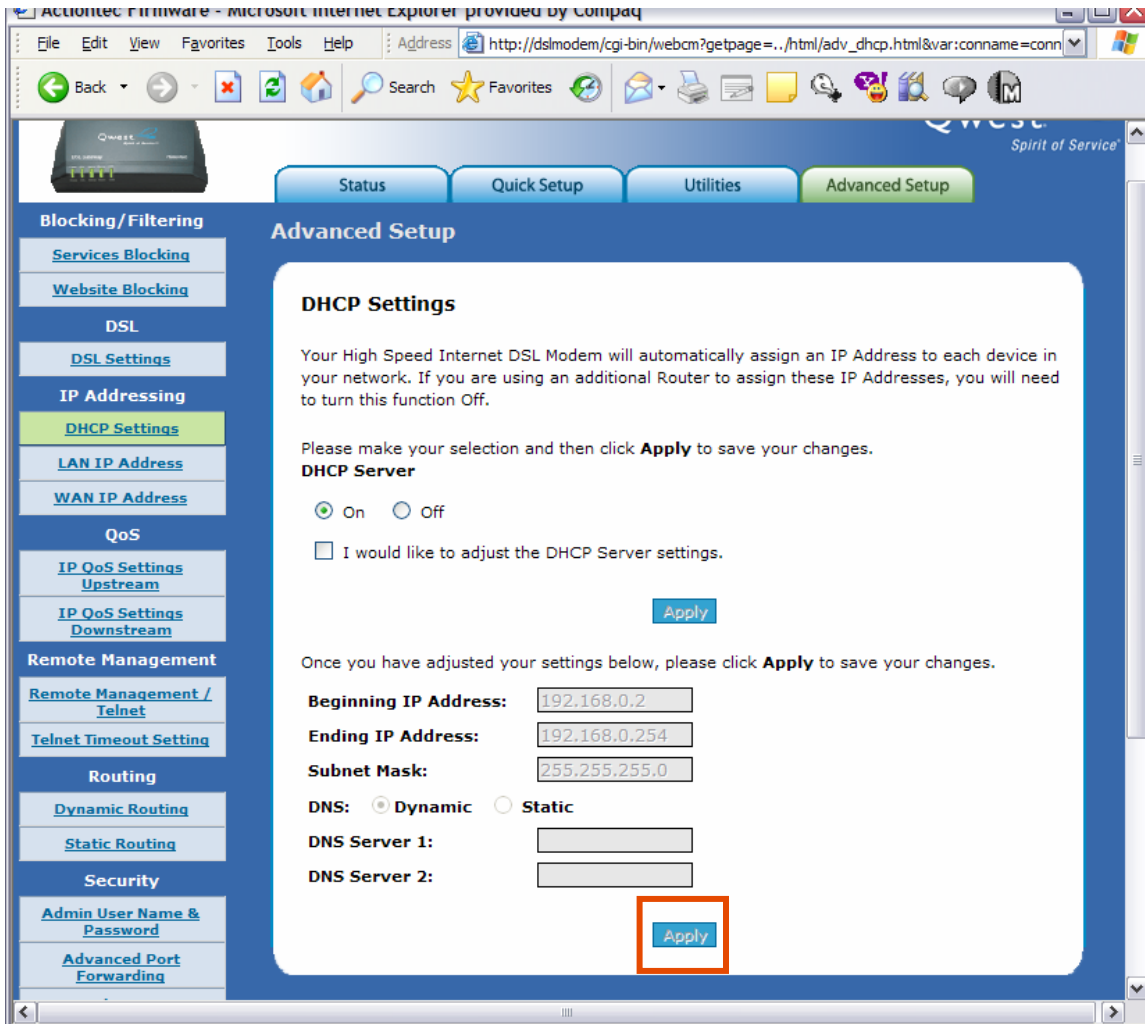


2. Select the **DHCP Settings** link.

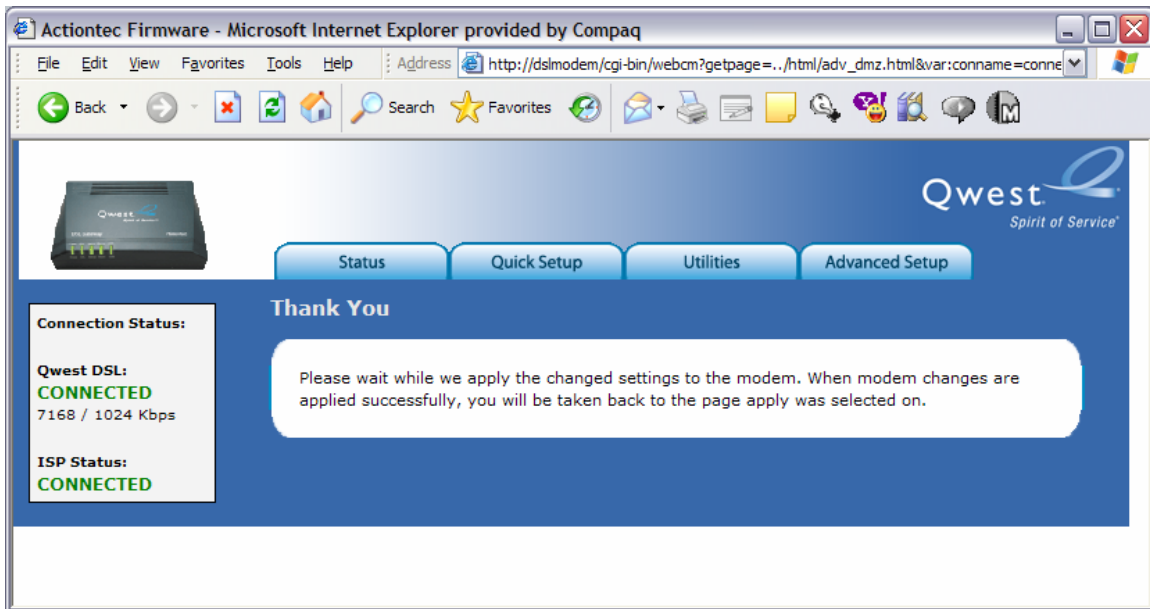


- To modify the **DHCP Server** setting, check the “I would like to adjust the DHCP server settings” check box. Adjust the address settings as required.

Then, select **Apply** to save your settings.



4. A “Thank You” page appears briefly. After configuration is complete, you’re automatically redirected to the “DHCP Settings” page.



Note: Reboot all devices on your LAN and ensure your LAN IP address of the Qwest Standard Modem: Actiontec GT701 is compatible with your new DHCP allocation.