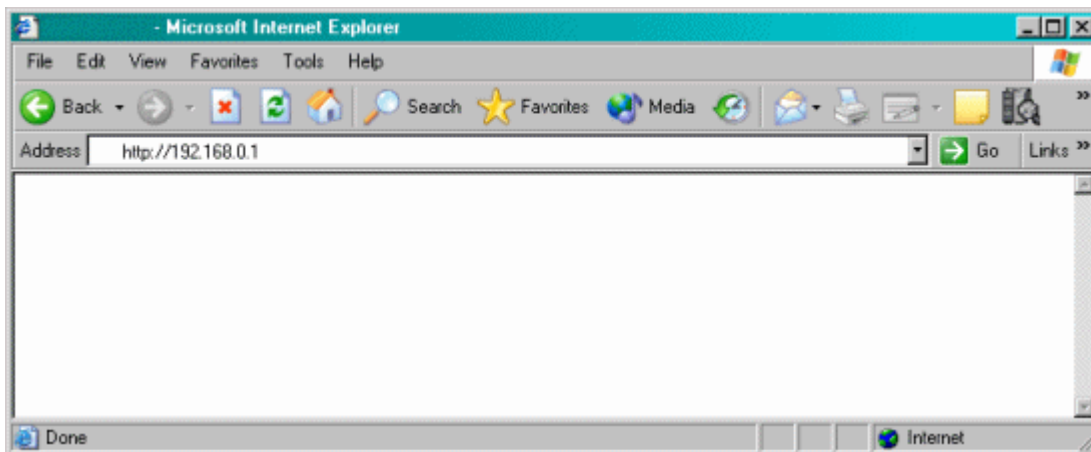


**Actiontec® Wireless-Ready DSL Gateway
Model GT701-wg**

How to Change VPI/VCI Settings

*Only experienced network administrators should perform this process.
Qwest® High-Speed Internet Technical Support doesn't support this process.*

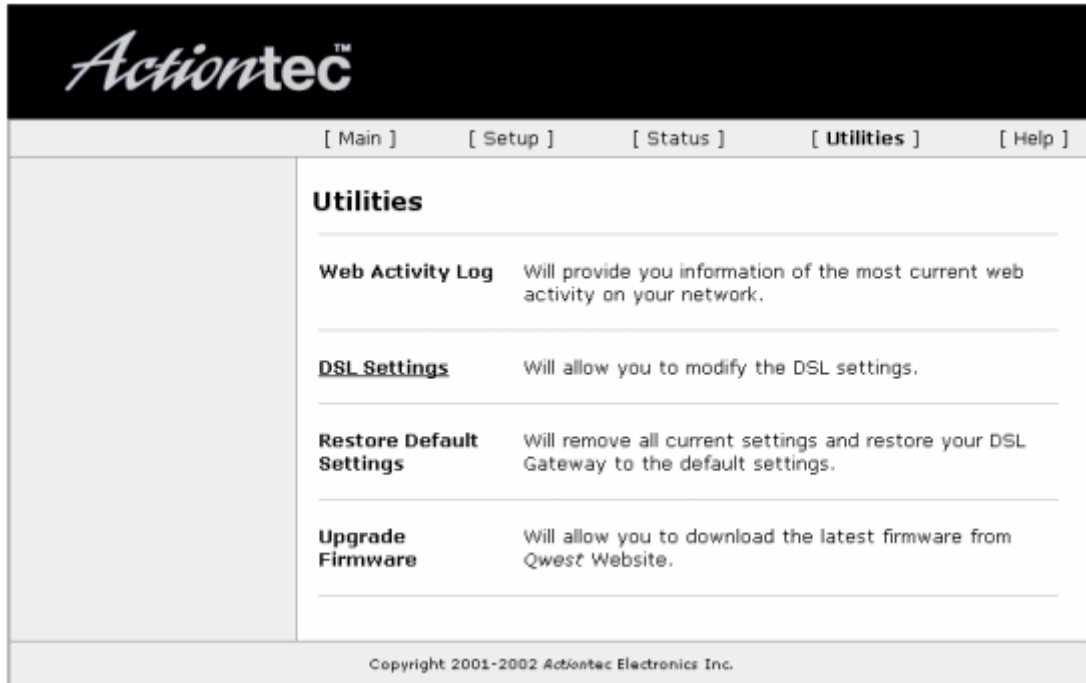
1. Open your Web browser (Microsoft® Internet Explorer or Netscape®). In the location or address bar, type **192.168.0.1**. Select **Enter**.



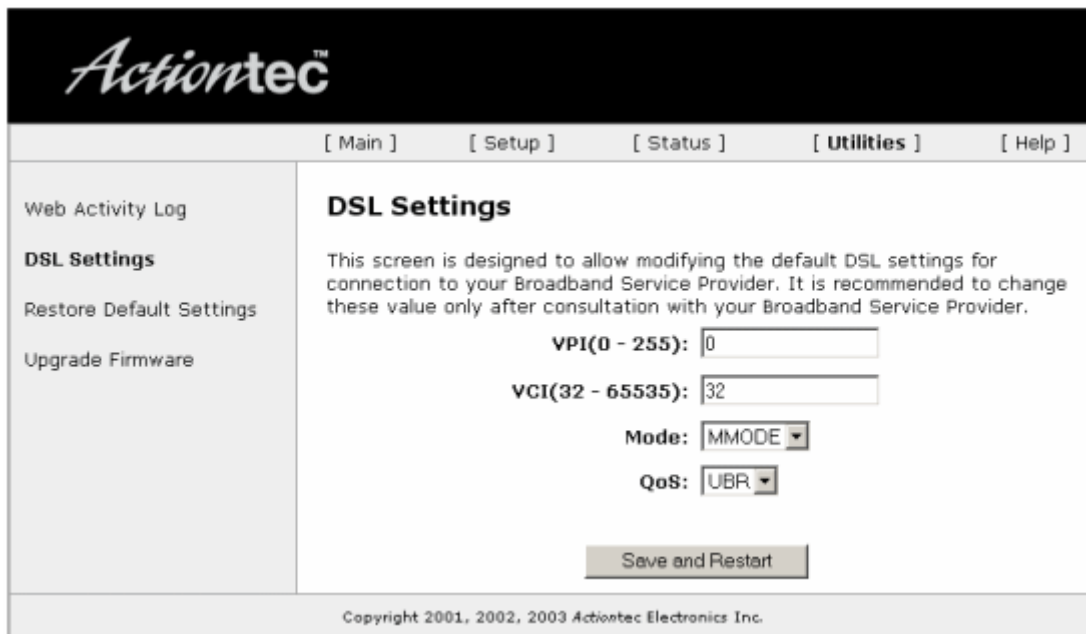
2. Select **Utilities**.



3. Select **DSL Settings**.



4. To change the VPI and VCI settings for your ISP, type the new information in the corresponding boxes (the values are typically 0,32 or 0,35). Then select the **Save and Restart** button.



5. Select the **Save and Restart** button. This will reboot the router with the new settings.



6. When the power LED light stops flashing, the configuration is complete.



