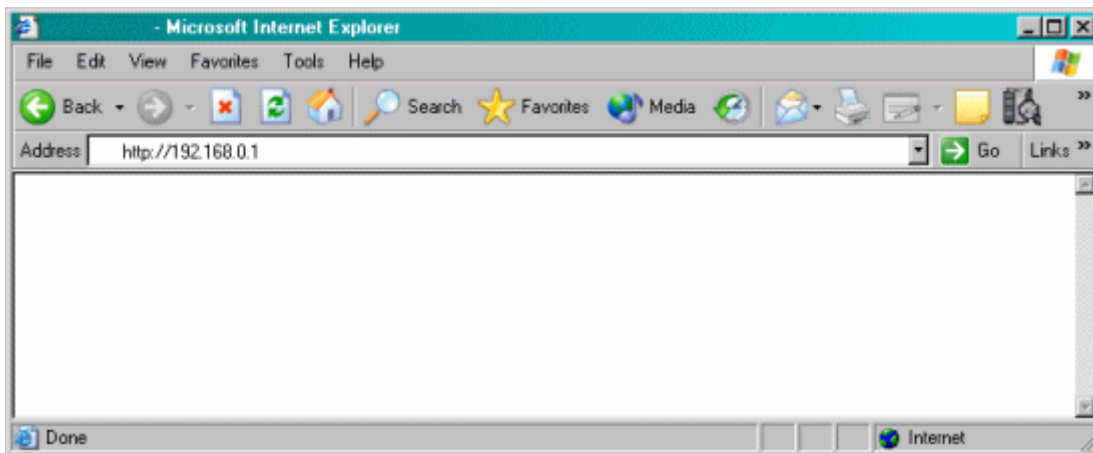


**Actiontec® Wireless-Ready DSL Gateway
Model GT701-wg**

How to Configure the DHCP Server

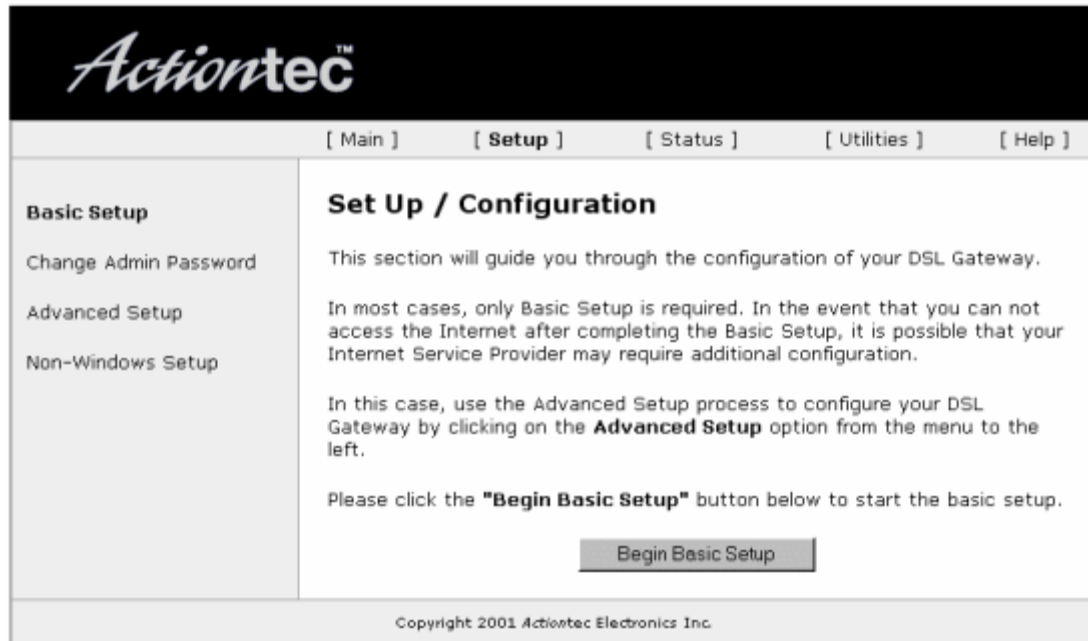
1. Open your Web browser (Microsoft® Internet Explorer or Netscape®). In the location or address bar, type **192.168.0.1**. Select **Enter**.



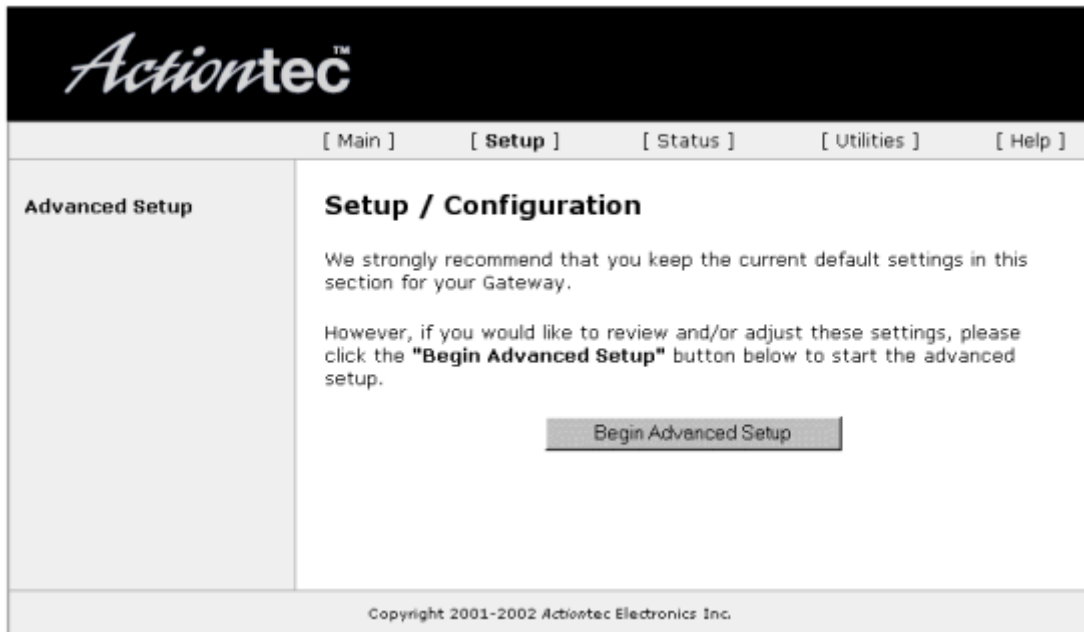
2. Select **Setup/Configuration**.



3. Select **Advanced Setup**.



4. Select the **Begin Advanced Setup** button.



5. On the DHCP Server screen, select the **On** or **Off** button. Select **Next**.



6. If you selected **On**, this screen will be displayed.

Here you can change which IP addresses are dispensed to the client computers. If you make changes select **Next**, then select **Save and Restart**.

The screenshot shows the Actiontec web interface for DHCP Server Configuration. At the top left is the Actiontec logo. A navigation bar contains links for [Main], [Setup], [Status], [Utilities], and [Help]. On the left is a sidebar menu under 'Advanced Setup' with options: WAN IP Address, Wireless Settings, LAN IP Address, DHCP Server (selected), Services Blocking, Website Blocking, VPN Pass Through, Remote Management, Port Forwarding, DMZ Hosting, Firewall, Dynamic Routing, NAT, Static Routing, and MAC Address Cloning. Below the menu is a 'Save and Restart' button. The main content area is titled 'DHCP Server Configuration' and contains the following fields:

- Beginning IP Address: 192.168.0.2
- Ending IP Address: 192.168.0.254
- SubnetMask: 255.255.255.0
- DNS: Dynamic Static
- DNS Server 1: 0.0.0.0
- DNS Server 2: 0.0.0.0

At the bottom of the main area are 'Back' and 'Next' buttons. The footer contains the text 'Copyright 2001-2002 Actiontec Electronics Inc.'

7. Select the **Save and Restart** button.



8. When the power LED light stops flashing, the configuration is complete.

