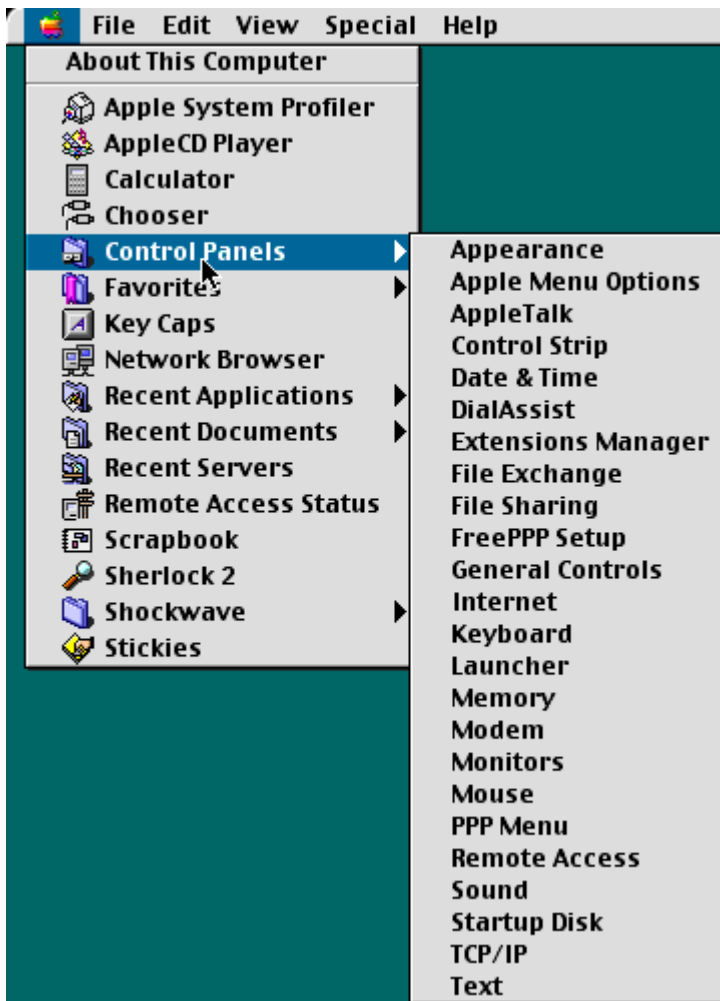


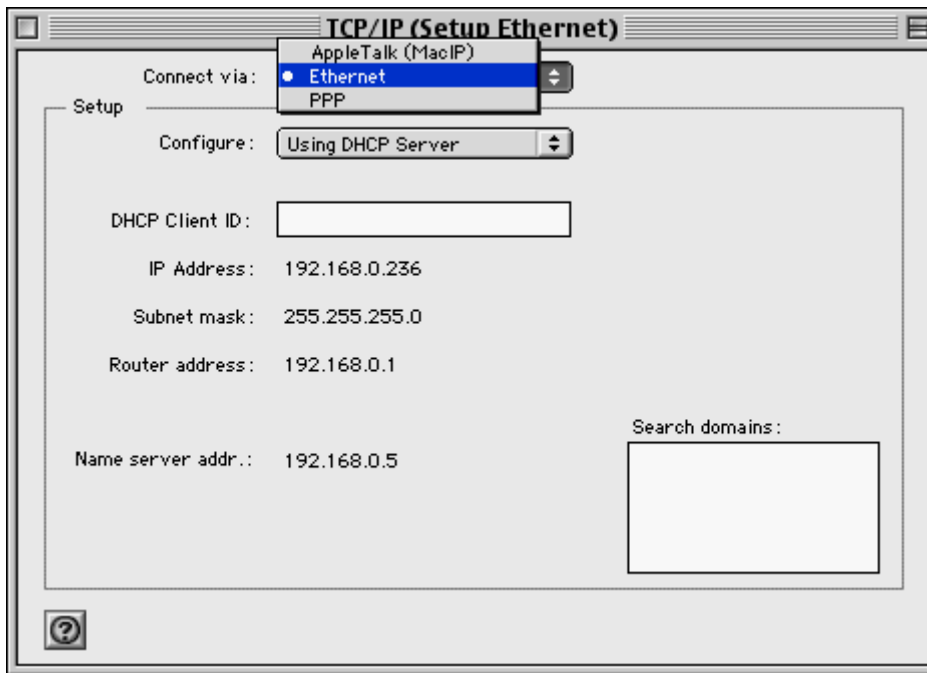
Actiontec® Wireless-Ready DSL Gateway
Model GT701-wg

How to Add a Static IP Address
Mac OS® 8/9

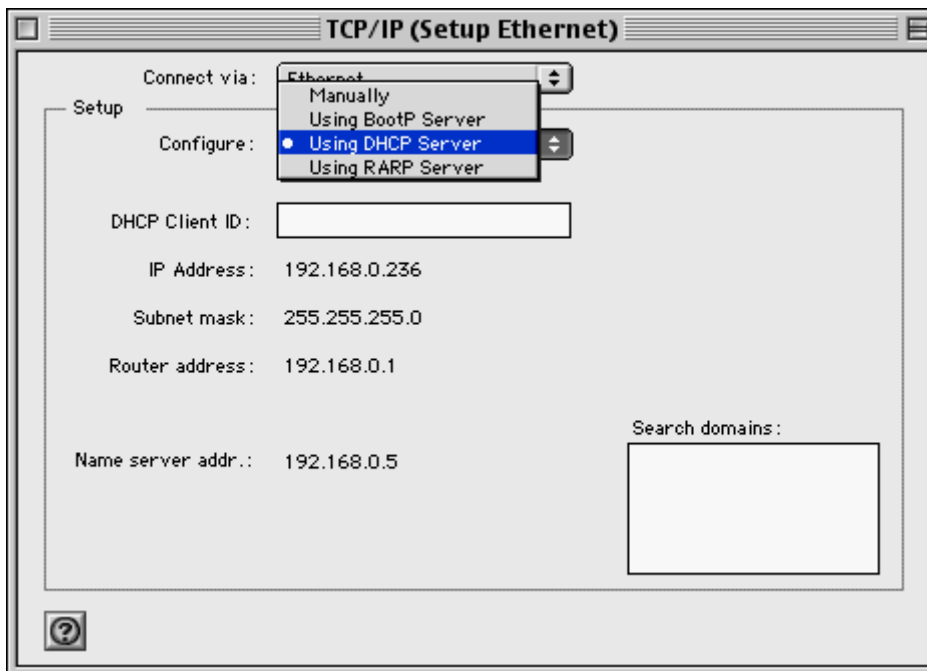
1. Select the **Apple** in the top left corner of the screen. Select **Control Panels** and then **TCP/IP**.



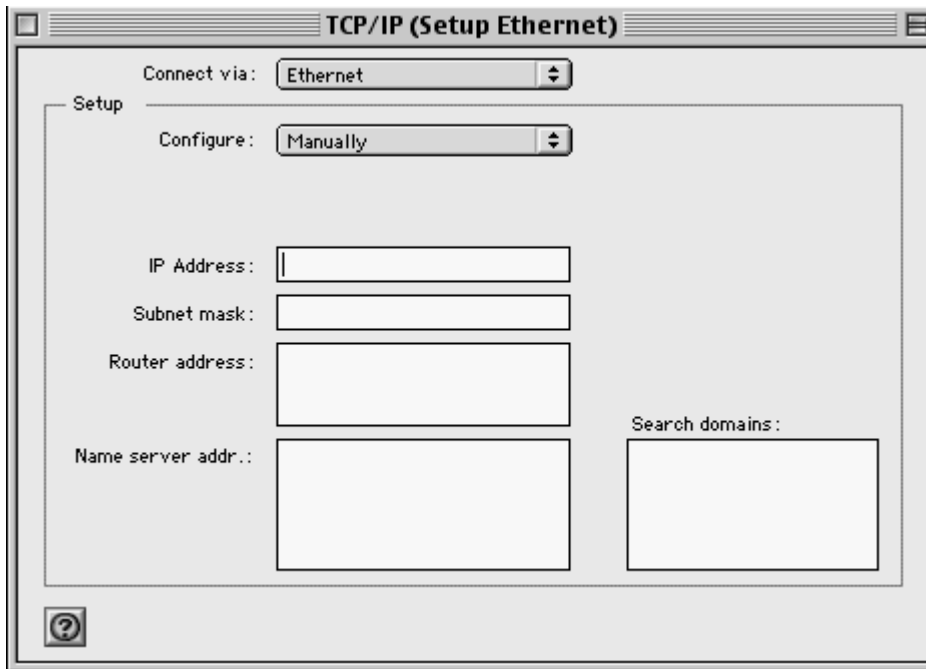
2. In the TCP/IP window, for **Connect via** select **Ethernet**.



3. In the **Configure** field, choose a setup. Select **Manually** (for static IPs) or **Using DHCP Server** (for dynamic IPs).

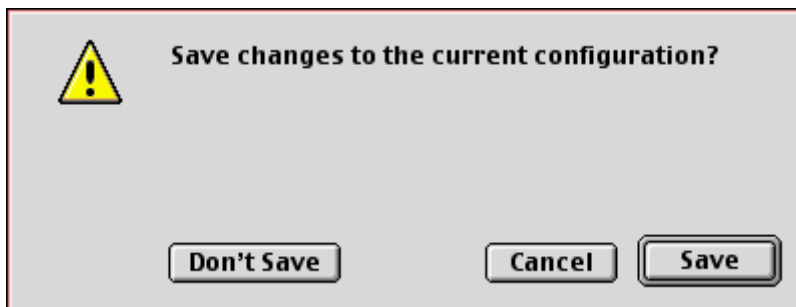


4. If you selected Manually in the Configure field, type in the IP Address, Subnet mask, Router address (Gateway), and Name server address (DNS) IP addresses. Click the **square** in the top left corner of the screen to exit.



The screenshot shows a window titled "TCP/IP (Setup Ethernet)". Inside the window, there is a "Connect via:" dropdown menu set to "Ethernet". Below it is a "Setup" section containing a "Configure:" dropdown menu set to "Manually". Underneath are four text input fields: "IP Address:", "Subnet mask:", "Router address:", and "Name server addr.:". To the right of these fields is a "Search domains:" text input field. A small square icon is located in the bottom-left corner of the window's content area.

5. Select **Save** when exiting.



The screenshot shows a dialog box with a yellow warning triangle icon on the left. The text inside the dialog box reads "Save changes to the current configuration?". At the bottom of the dialog box, there are three buttons: "Don't Save", "Cancel", and "Save".