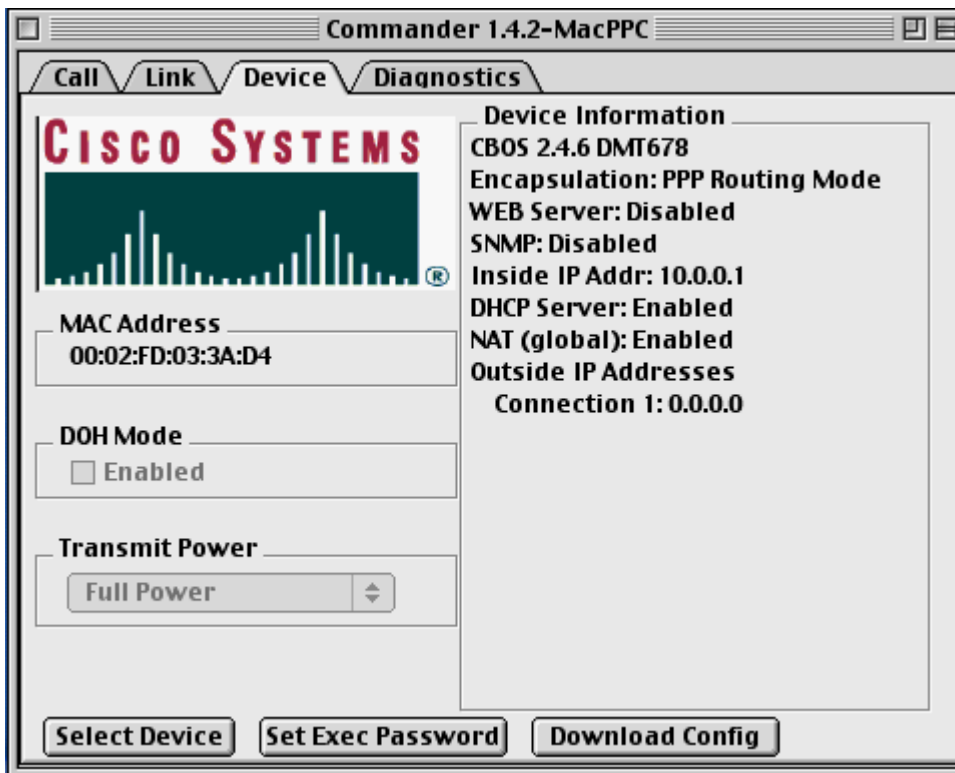


## Cisco® 675 and 678 Modem

### How to Set the EXEC Password in Commander Macintosh®

1. Open Commander. Select the **Device** tab. Then select **Set Exec Password**.



2. Type in your new EXEC password in the boxes. Select **OK**.



The image shows a dialog box titled "Exec Password". It contains two text input fields. The first field is labeled "New Password" and the second field is labeled "Re-Enter Password". Below the fields are two buttons: "Cancel" and "OK".

3. Now you can use Telnet to access the modem.