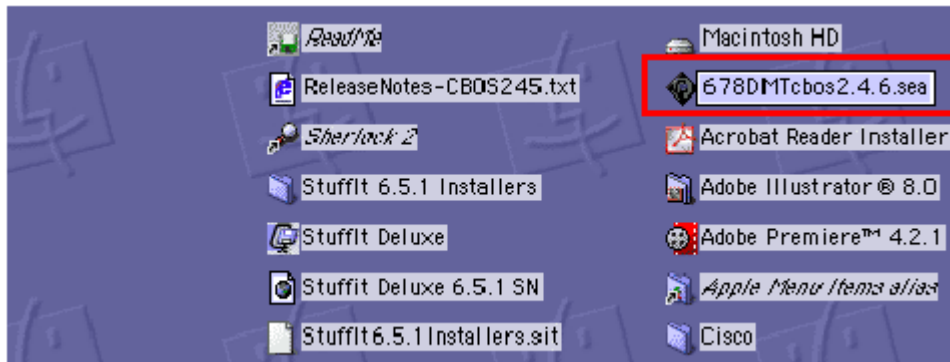


Cisco® 678 Modem – DMT Version

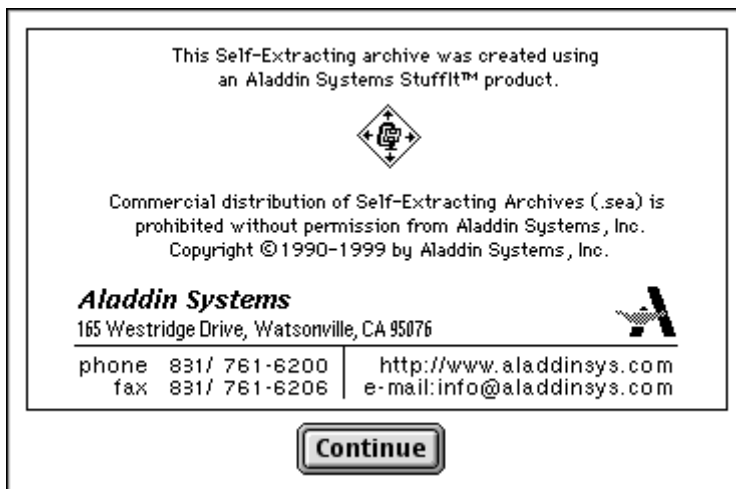
How to Update to CBOS Version 2.4.6 Mac OS® 8.0.1 or Higher

PART ONE

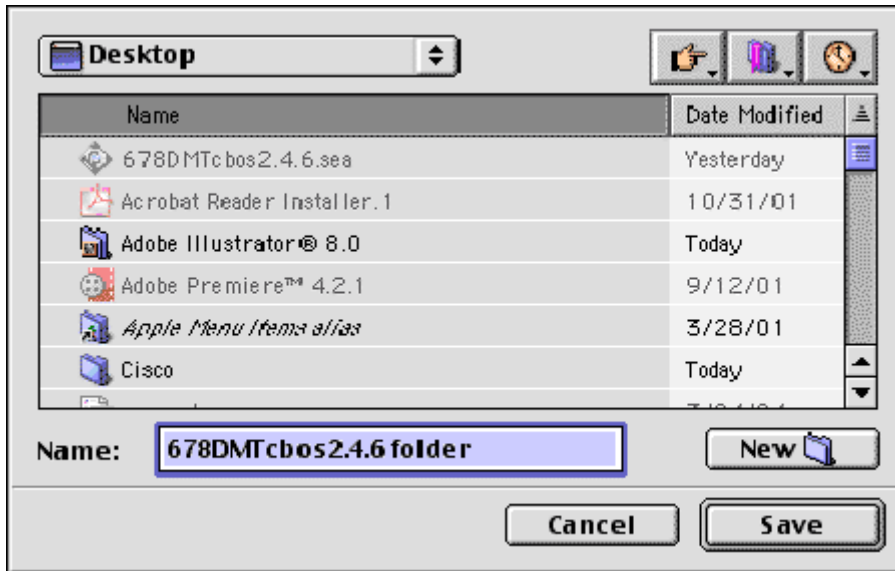
1. Open the **678DMTcbos2.4.6.sea** file saved on your desktop.



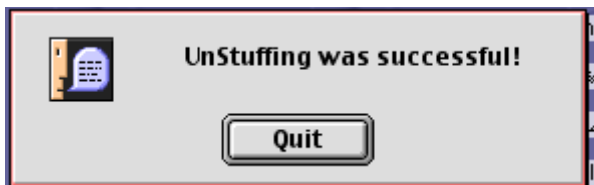
2. Select **Continue**.



3. Unstuff the **678DMTcbos2.4.6** folder. Then, select **Save**. Be sure to note where you save the files.



4. Select **Quit**.



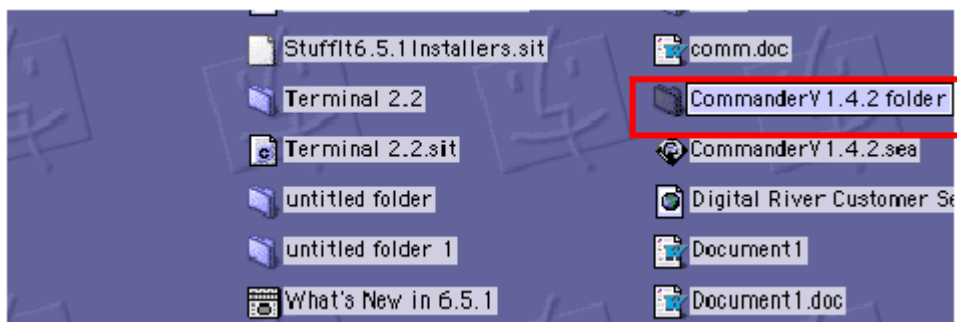
PART TWO

Cisco® 678 Modem – DMT Version

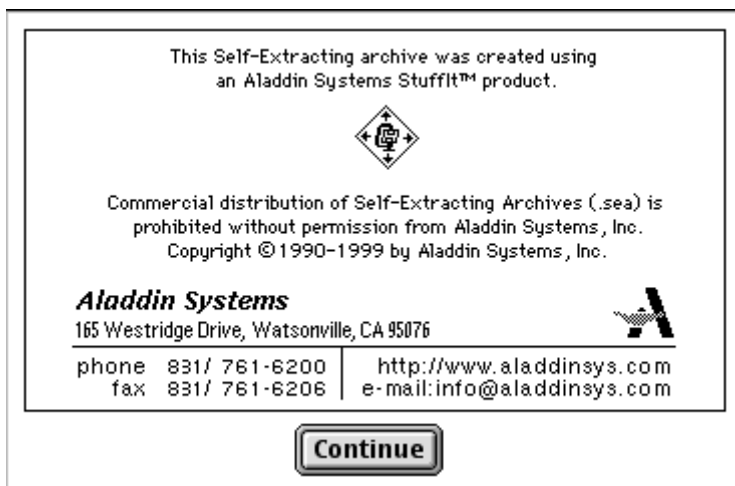
How to Download the Cisco® Commander Software Version 1.4.2

Mac OS® 8.0.1 or Higher

1. Open the **CommanderV1.4.2.sea** folder you saved to your desktop.



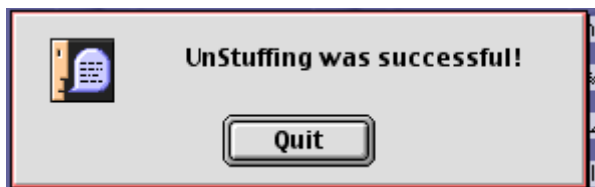
2. Select **Continue**.



3. Save the program to your desktop. Unstuff the **CommanderV1.4.2 folder**. Then, select **Save**.



4. Select **Quit**.



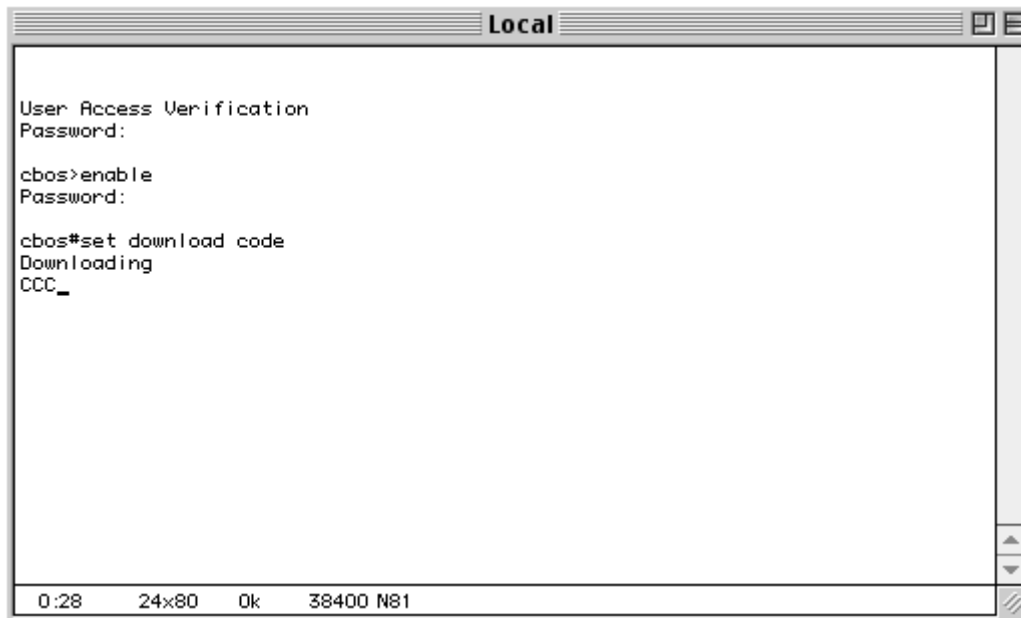
PART THREE

Cisco® 678 Modem – DMT Version

How to Download the Modem Operating System Software DMT CBOS Version 2.4.6

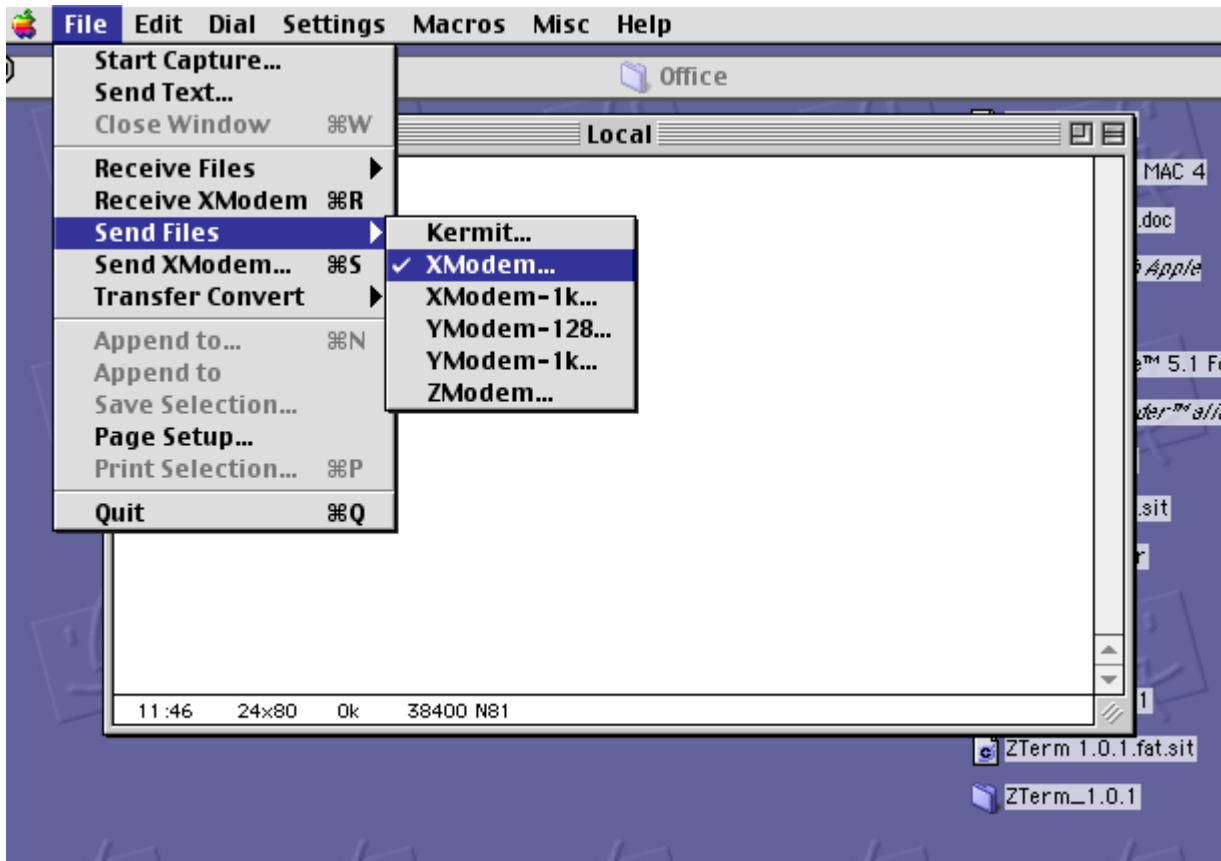
Mac OS® 8.0.1 or Higher

1. At the "cbos#" prompt in Zterm, type **set download code**.

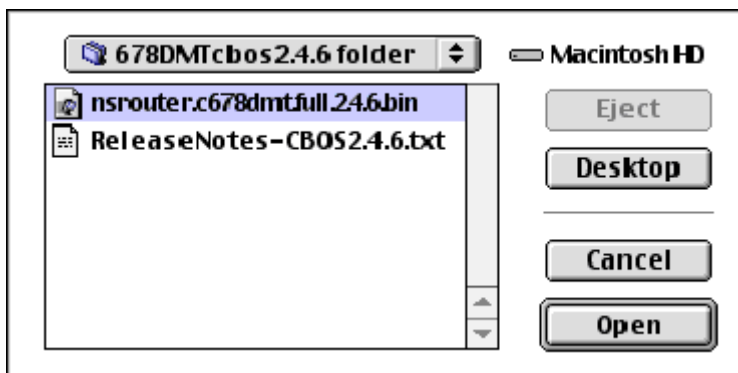


```
Local
User Access Verification
Password:
cbos>enable
Password:
cbos#set download code
Downloading
CCC_
0:28 24x80 Ok 38400 N81
```

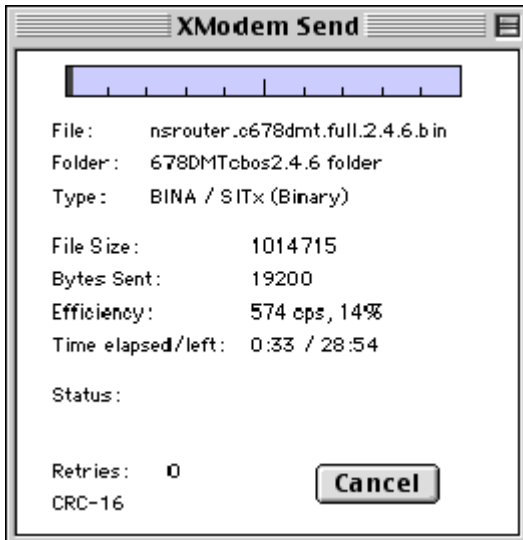
- As the Cs are displayed, select the **File** menu. Then select **Send Files**, and **XModem** from the options on the right.



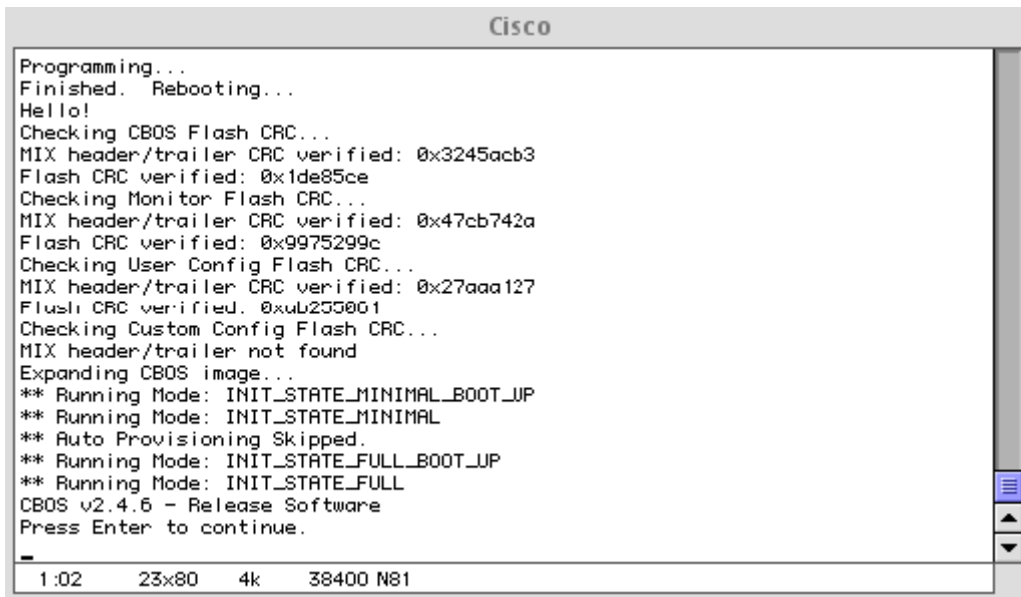
- Open the **nsrouter.c678dmt.full.2.4.6.bin** in the 678DMTcbos2.4.6 folder.



- The software download process to your modem has begun. This process takes about 25 minutes. Don't interrupt the download process or you could render your Cisco® 678 useless.



- When the download screen closes and your modem reboots, exit out of ZTerm.



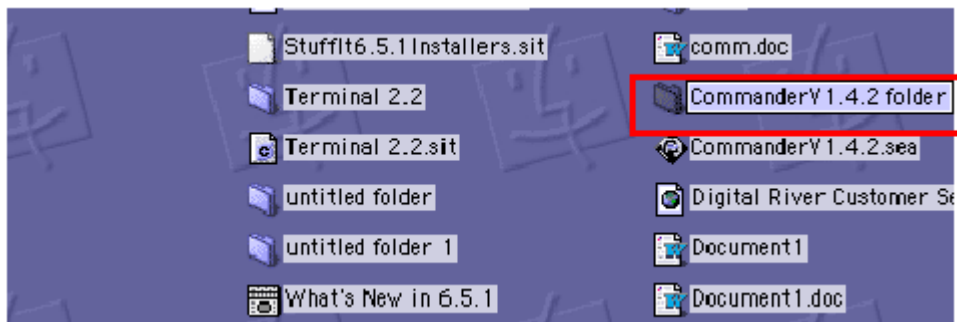
PART FOUR

Cisco® 678 Modem – DMTVersion

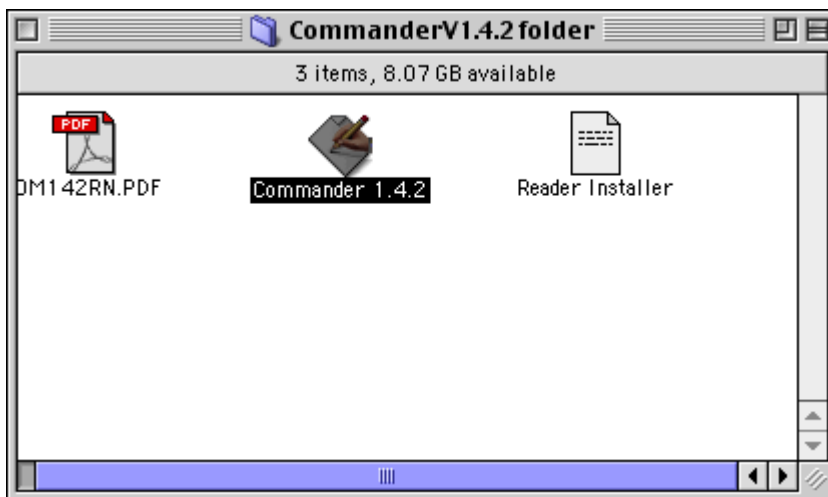
How to Install the Cisco® Commander Software Version 1.4.2

Mac OS® 8.0.1 or Higher

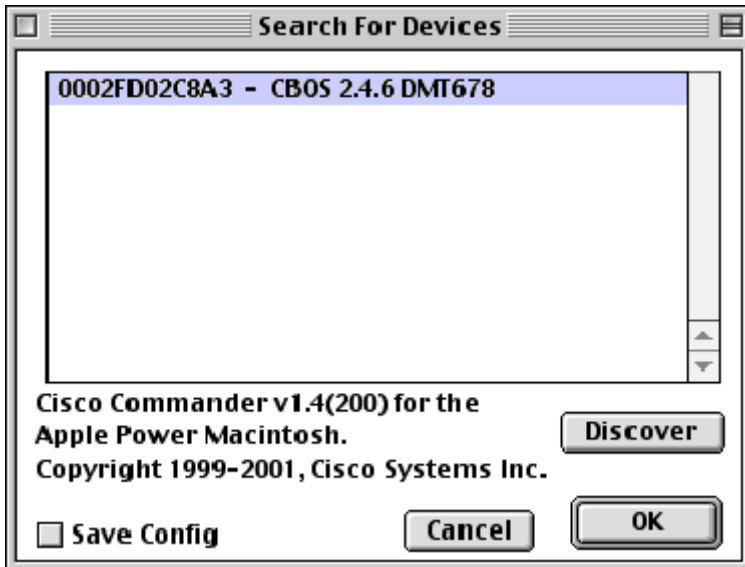
1. Open the **CommanderV1.4.2** folder.



2. Double-click on the **Commander 1.4.2** icon.



3. Select **OK**.



4. Type your password. If you don't have one, leave the password field blank. Then, select **OK**.



5. If your modem is trained, you'll see the "Close Connection" bar as shown in the picture below.

If the modem isn't trained, select the **Open Connection** bar.

