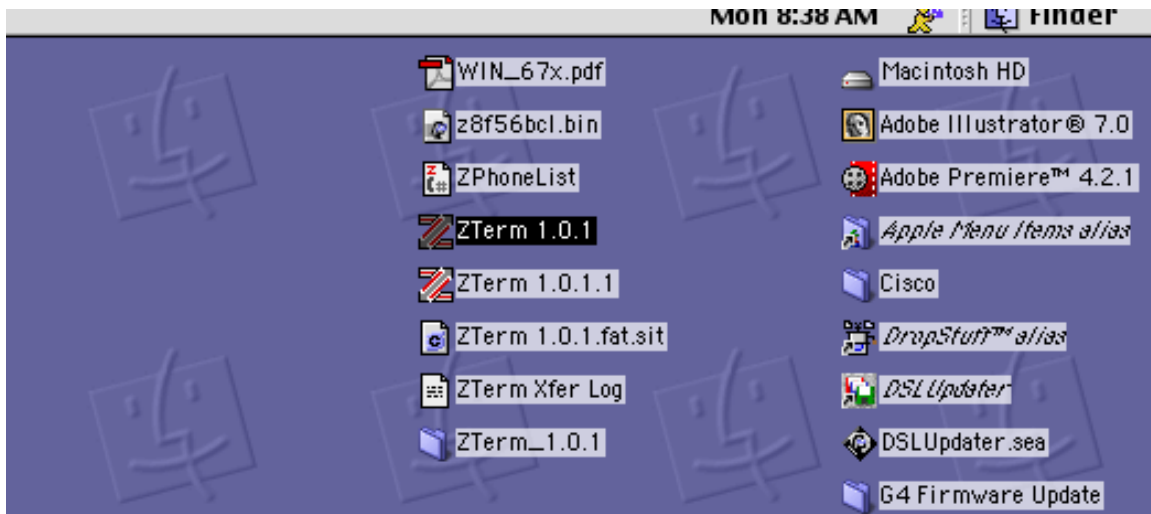


Cisco® 678 Modem

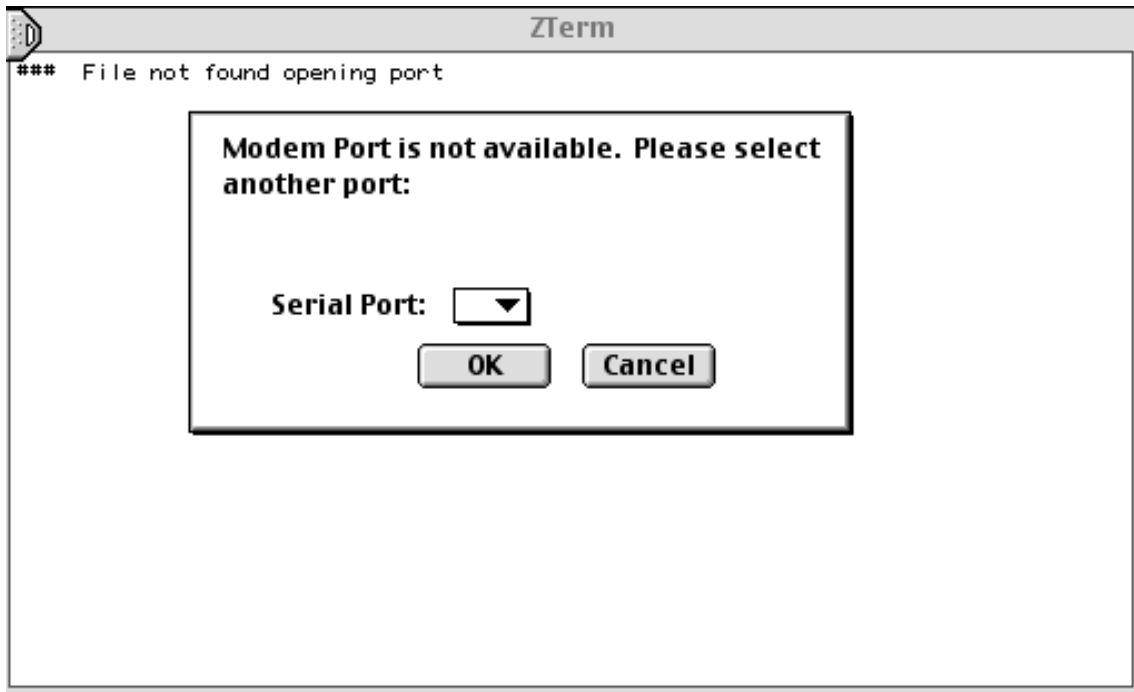
How to Determine if Your Modem Version is CAP or DMT

Macintosh®

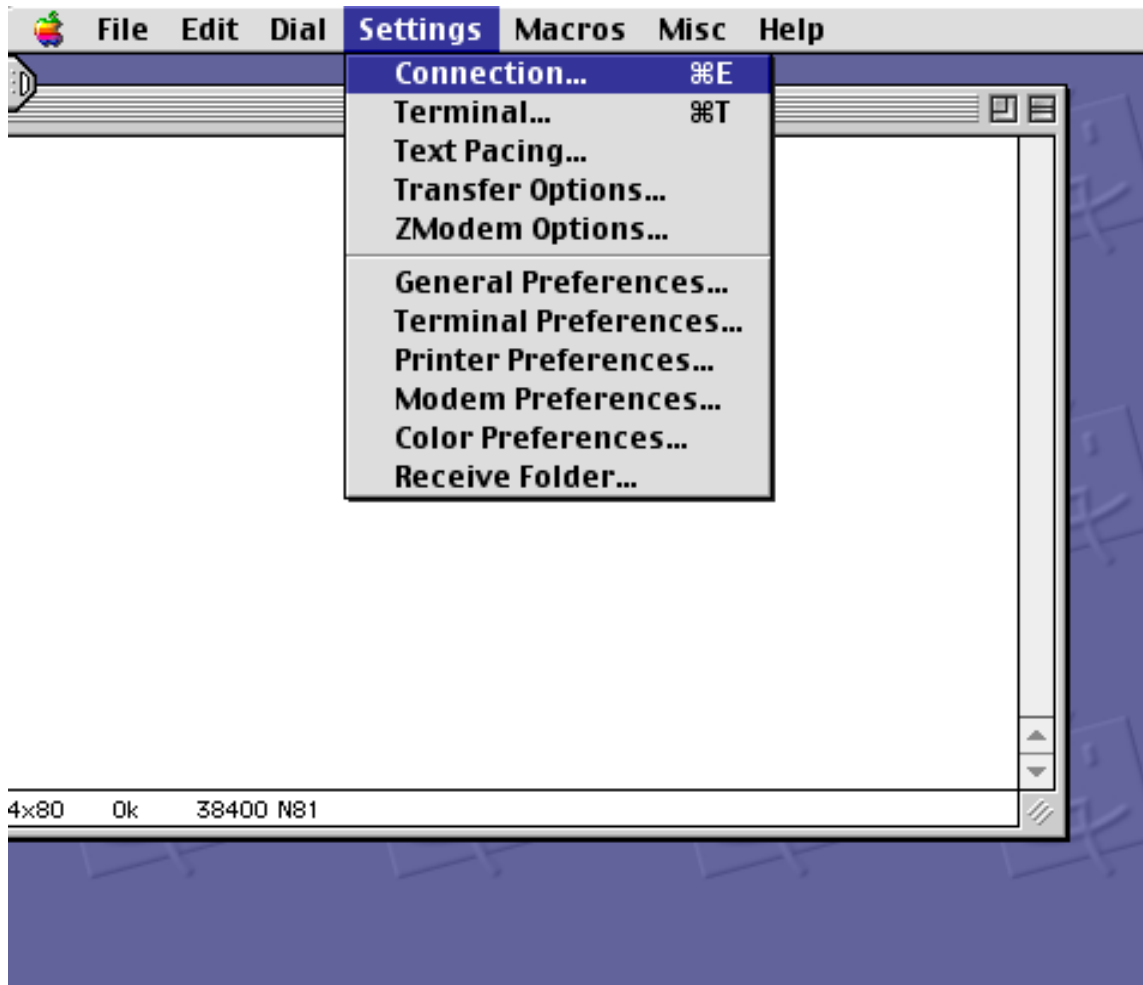
1. The software program you'll use to connect to your modem is **ZTerm 1.0.1**. ZTerm 1.0.1 is a terminal program that allows you to enable a software connection to your modem for modem configuration.
 - When you received your modem, you also received a MAC connectivity kit. The kit included a CD-ROM.
 - Please insert the CD-ROM into your CD-ROM drive and install the ZTerm 1.0.1 program if you haven't already done so.
 - To use ZTerm, you must be running Mac OS® 9.2 or older. If you are running Mac OS X (10), you must reboot into Mac OS 9.2 or older.
2. To access ZTerm 1.0.1, double-click the **ZTerm 1.0.1 icon** on your desktop.



3. If the computer doesn't recognize which port the management cable is connected to, the following screen will appear. Please select the correct port from the **Serial Port** drop-down menu.



4. From the **Finder** menu, select **Settings**. Then, select **Connection**.



5. Set the following **Connection** parameters:

- Service Name: **Cisco**
- Bits per second: **38400**
- Data bits: **8**
- Parity: **None**
- Stop bits: **1**
- Flow control: **None (do not check either option)**

Then, select **OK**.

Service Name: Cisco

Phone Number:

Pre-dial init:

Account: Password:

Data Rate: 38400 ▼ **Data Bits:** 8 ▼

Parity: None ▼ **Stop Bits:** 1 ▼

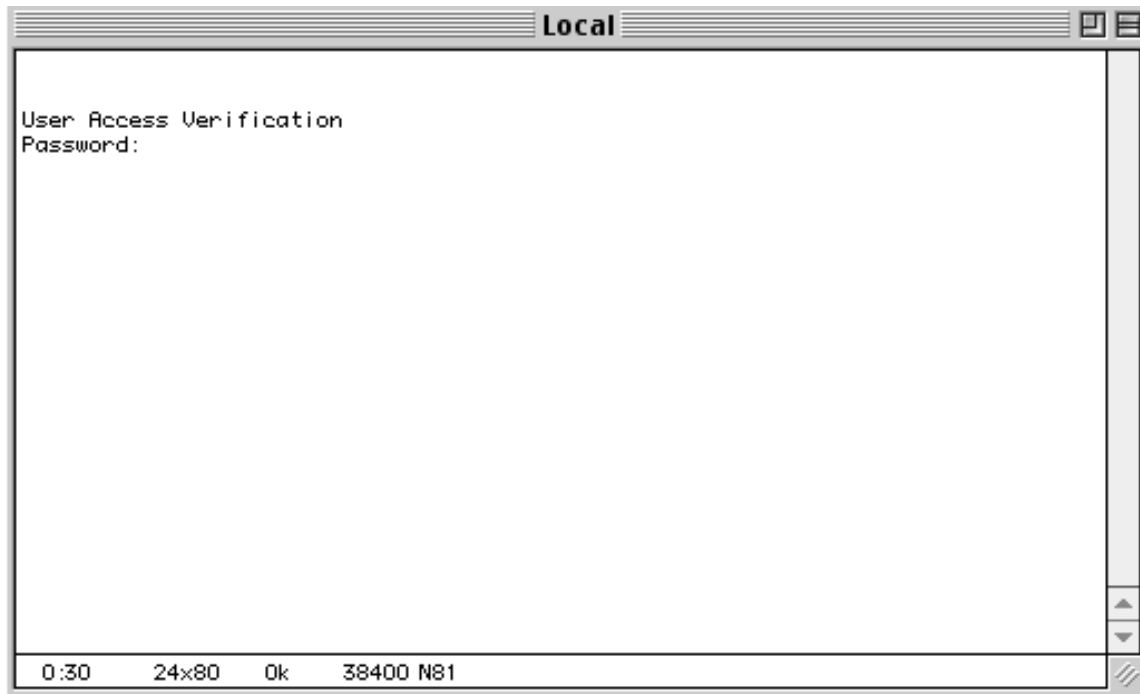
Local Echo

Flow Control: Xon/Xoff Hardware Handshake

OK Cancel

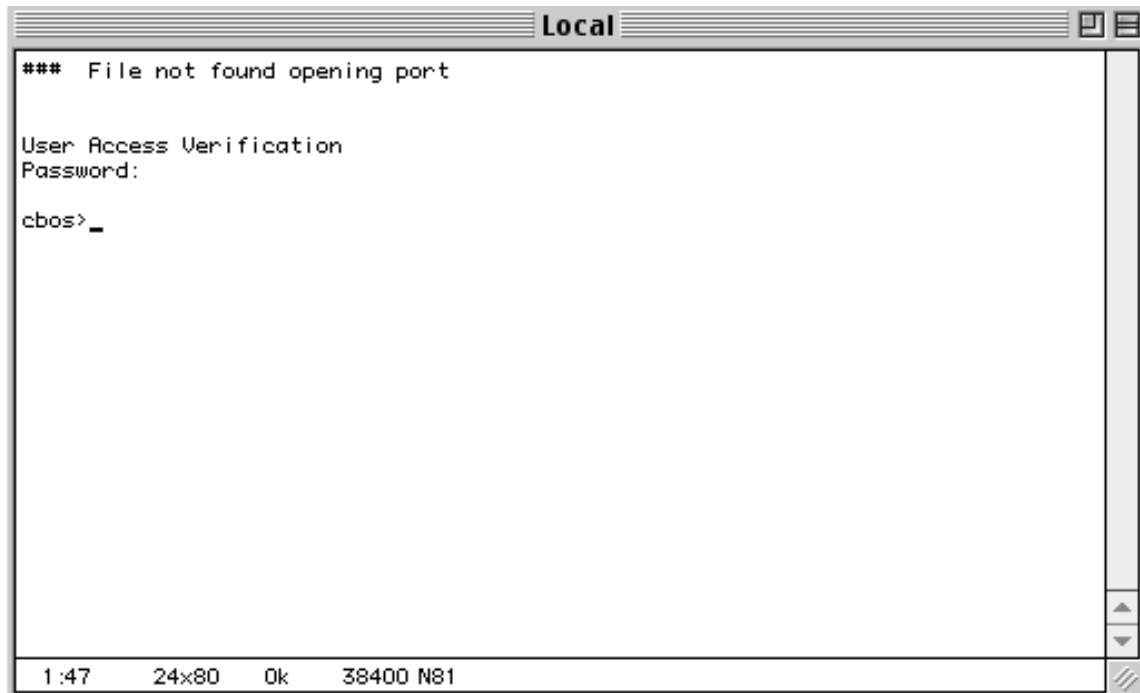
Note: If you can't connect to your modem, reconfigure the "Data Rate" field to **9600**. Then, try to reconnect. If you have further connection problems, turn off the power to your modem for 30 seconds, then turn it back on.

6. Select **Enter** to initiate the session in ZTerm (if the session doesn't initiate, select **Enter** again). You should reach the prompt as shown in the picture below.



7. If you haven't set an executive password, simply select **Enter** to access the modem. If you did set an executive password, type it at the prompt and then select **Enter**.

You should reach the prompt as shown in the picture below.



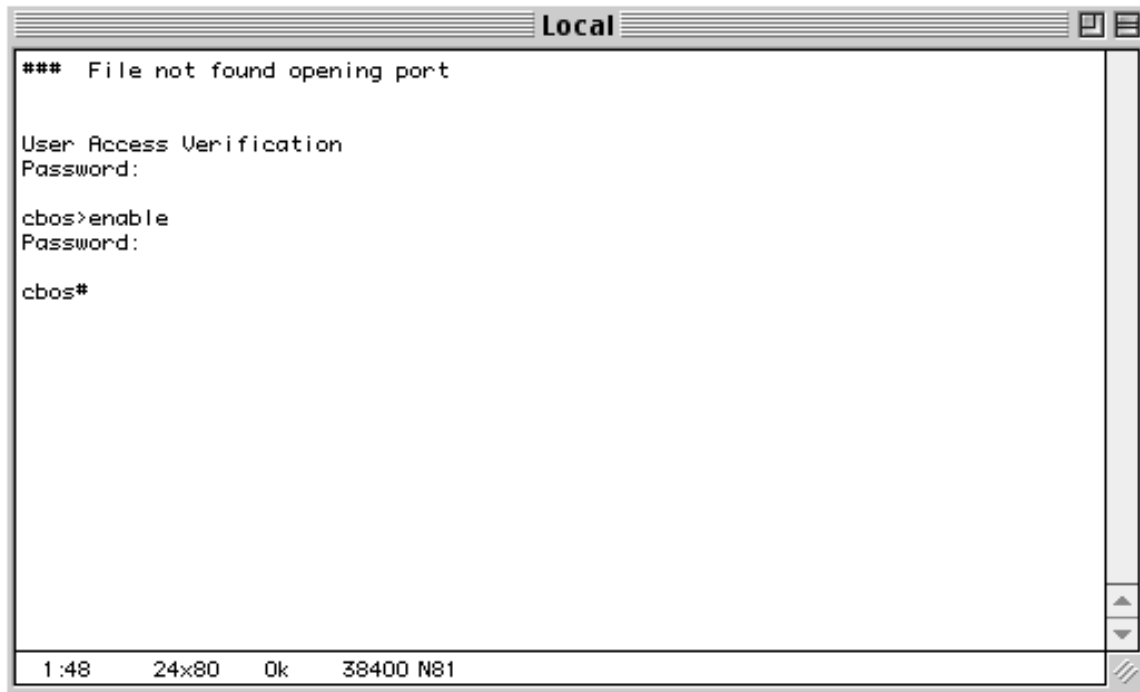
```
Local
*** File not found opening port

User Access Verification
Password:

cbos>_

1:47 24x80 Ok 38400 N81
```

8. Type **enable** at the “cbos” prompt. Then, select **Enter**.



```
Local
*** File not found opening port

User Access Verification
Password:

cbos>enable
Password:

cbos#

1:48 24x80 Ok 38400 N81
```

9. At the “Password:” prompt, select **Enter**. The “cbos#” prompt will appear.

10. At the “cbos#” prompt, type **show version**.

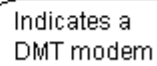
If your modem is set to **CAP**, the following will appear.

```
Cisco Broadband Operating System
CBOS (tm) 678 Software (C678-I-M), Version v2.4.1 - Release Software
Copyright (c) 1986-2000 by Cisco Systems, Inc.
Compiled Dec 8 2000 09:57:54
CAP firmware version C.33
NVRAM image at Ux1U3129aU
```

Indicates a
CAP modem

If your modem is set to **DMT**, this will appear.

```
Cisco Broadband Operating System  
CBOS (tm) 678 Software (C678-I-M), Version v2.4.1 - Release Software  
Copyright (c) 1986-2000 by Cisco Systems, Inc.  
Compiled Dec. 8 2000 09:45:11  
DMT FULL firmware version G96  
NVRAM image at 0x1030a9a0
```



Indicates a
DMT modem

11. Minimize your HyperTerminal session, instead of closing it. You'll need access to it when updating your modem software.