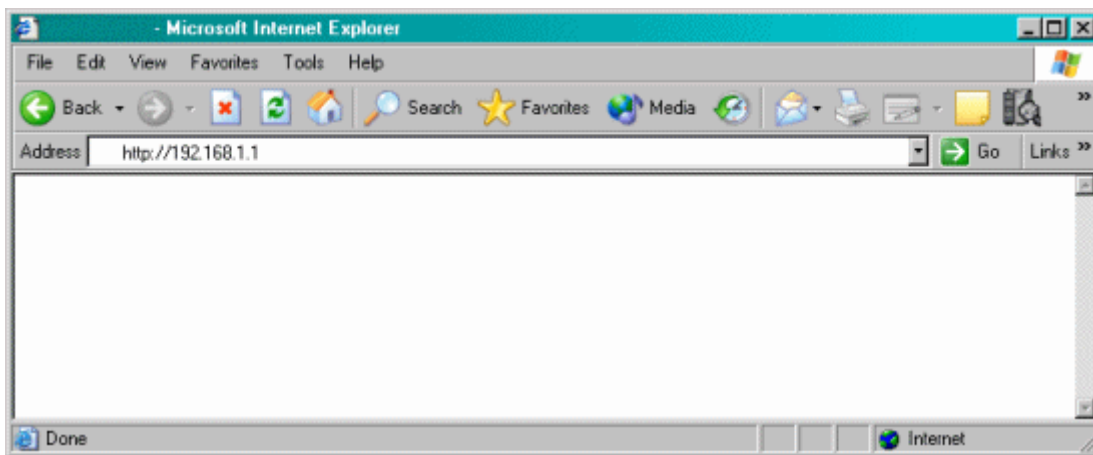


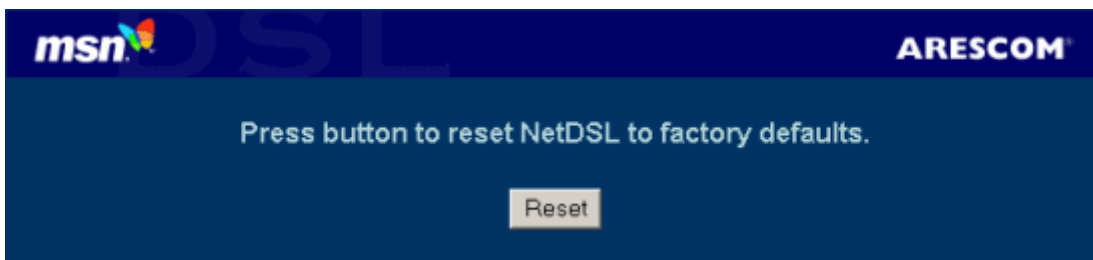
Arescom® NetDSL 800 Modem

How to Reset the Modem to Factory Defaults

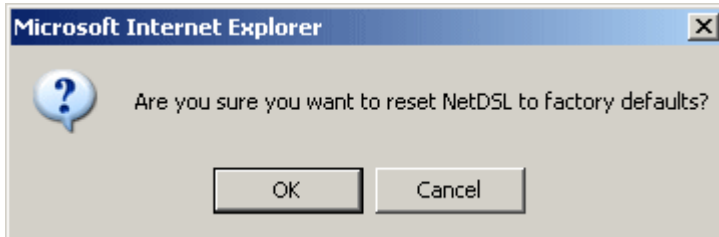
1. All modem configurations will be lost during this reset. Record all configuration information before continuing.
2. Open your Web browser (e.g., Microsoft® Internet Explorer or Netscape®). In the location or address bar, type **192.168.1.1/reset.html**. Then, select **Enter**.



3. Select **Reset**.



4. Select OK.



5. Reconfigure the high-speed Internet modem using the configuration information you recorded.