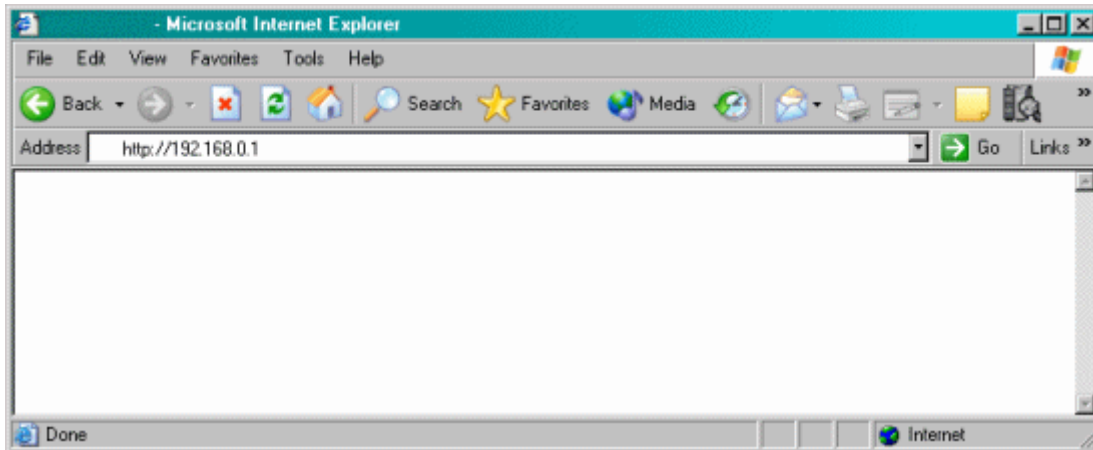


Actiontec® 1520 and 1524

How to Change the Administrative Password

1. Open your Web browser (Microsoft® Internet Explorer or Netscape®). In the location or address bar, type **192.168.0.1**. Select **Enter**.



2. Select **Setup / Configuration**.



3. Select **Change Admin Password**.

Actiontec™

[Main] [Setup] [Status] [Utilities] [Help]

Basic Setup

- Change Admin Password
- Advanced Setup
- Non-Windows Setup

Set Up / Configuration

This section will guide you through the configuration of your DSL Gateway.

In most cases, only Basic Setup is required. In the event that you can not access the Internet after completing the Basic Setup, it is possible that your Internet Service Provider may require additional configuration.

In this case, use the Advanced Setup process to configure your DSL Gateway by clicking on the **Advanced Setup** option from the menu to the left.

Please click the **"Begin Basic Setup"** button below to start the basic setup.

Copyright 2001 Actiontec Electronics Inc.

4. Enter your password and confirm it in the second box. Select **Save and Restart**.

NOTE: Write down your password in a secure location. You need the password to access the Actiontec Web interface. The Actiontec predefined user name is "admin" in lower case. You can't change the user name, only the password.

Actiontec™

[Main] [Setup] [Status] [Utilities] [Help]

Change Admin Password

- Change Admin Password
- Advanced Setup
- Non-Windows Setup

Change Admin Password

New Password

Re-enter New Password

Please click the **Save and Restart** button below to save your settings and restart your DSL Gateway.

Copyright 2001-2002 Actiontec Electronics Inc.

5. Select the **Save and Restart** button.



6. When the Power LED stops flashing, the configuration is complete.

