

How to Configure Wireless Internet Access (Wi-Fi) on the Actiontec® 1520 or 1524

**Internet Service Provider (ISP):
All**



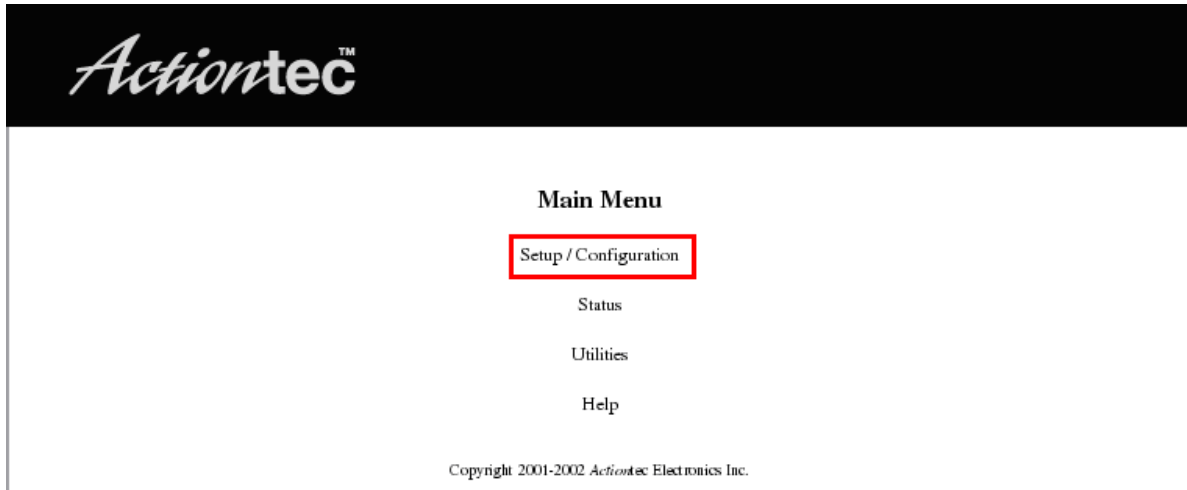
Use this document if:

- You need to configure your Actiontec 1520 or 1524 for wireless internet access.

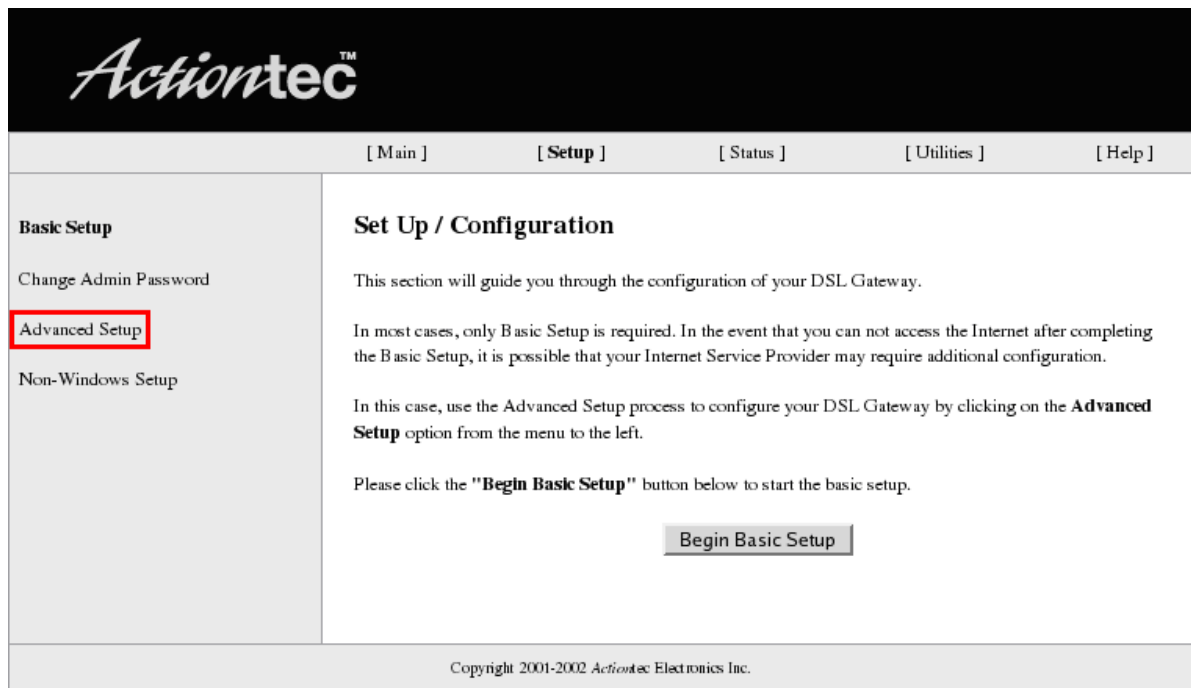
This document assumes:

- Your computer is connected directly to your Actiontec 1520 or 1524 using an Ethernet cable.
- Your Actiontec 1520 or 1524 is powered on.

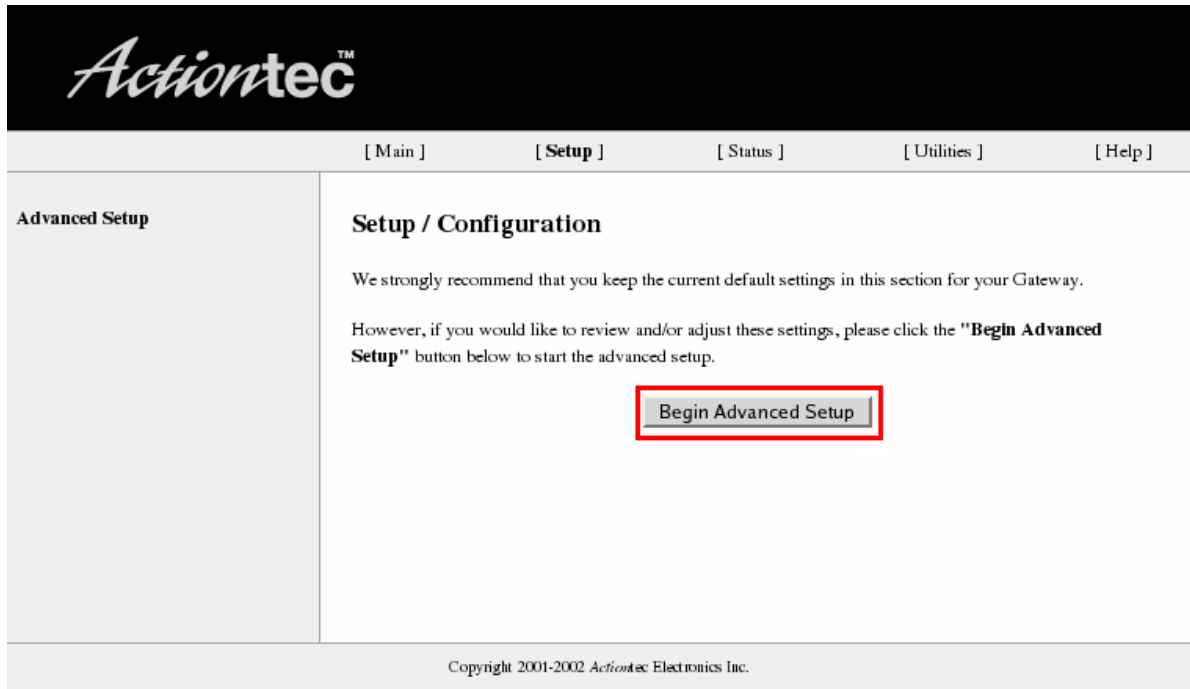
1. Open a web browser and navigate to <http://192.168.0.1> to access the Actiontec Main Menu. Select **Setup/ Configuration**.



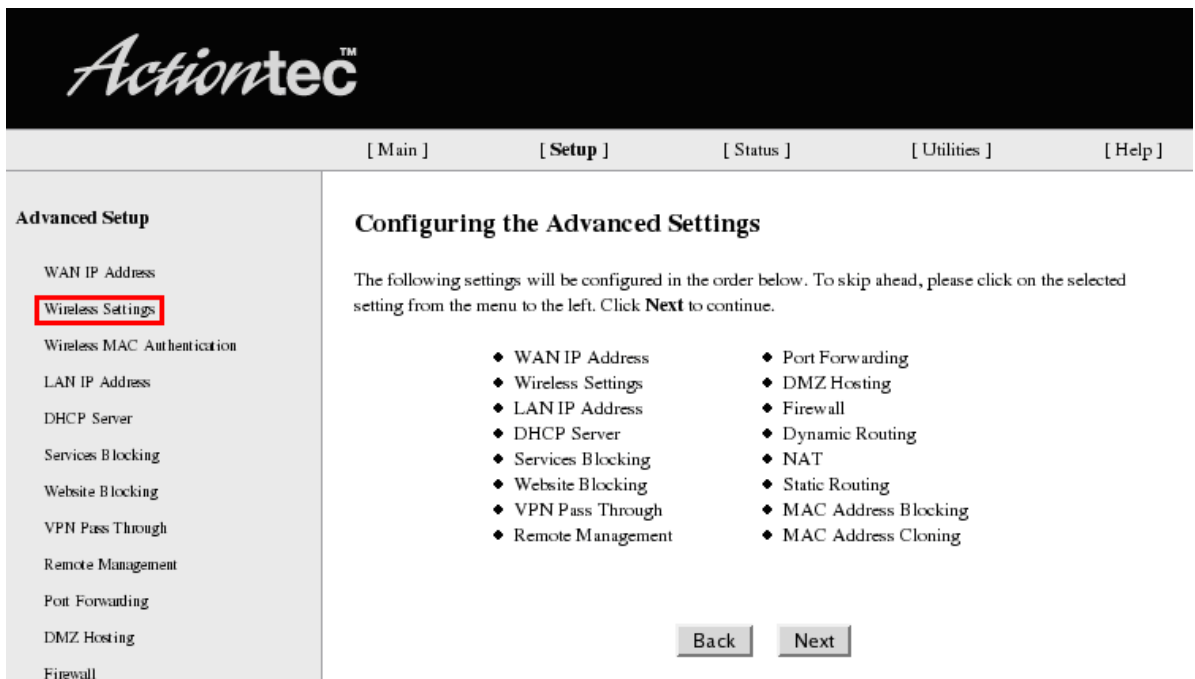
2. Select **Advanced Setup**.



3. Select **Begin Advanced Setup**.



4. Select **Wireless Settings**.



5. On the Wireless Settings screen, configure your modem as follows:
- **ESSID**- How your DSL modem will appear to local wireless devices.
 - **Channel**- The primary channels are 1, 6, and 11. Wireless equipment, like 2.4GHz cordless phones, wireless security cameras, and wireless baby monitors can interfere with your wireless internet.
 - **WEP**- Select 64-bit or 128-bit to encrypt your wireless connection.
- Select **Next**.

The screenshot shows the Actiontec web interface for configuring wireless settings. The top navigation bar includes links for [Main], [Setup], [Status], [Utilities], and [Help]. The left sidebar lists various setup options, with 'Wireless Settings' selected. The main content area is titled 'Wireless Settings' and contains the following text:

If you are using Wireless Networking, we recommend that you change the default settings and turn on the WEP encryption. The values you defined on this screen must also be used for all your wireless computers.

Note: The current default wireless settings for your Gateway are: ESSID is **ACTIONTEC**, channel is **1**, and WEP encryption selection value is **OFF**.

Click **Next** to continue.

ESSID:

Channel:

WEP: OFF 64-bit 128-bit

NOTE: WEP (Wired Equivalent Privacy) encryption is an optional security measure for your wireless network.

At the bottom of the settings area, there are two buttons: 'Back' and 'Next'. The 'Next' button is highlighted with a red rectangular border.

Copyright 2001-2002 Actiontec Electronics Inc.

6. Select **Save and Restart** to apply your settings.

The screenshot shows the Actiontec web interface. At the top left is the Actiontec logo. A navigation bar contains links for [Main], [Setup], [status], [Utilities], and [Help]. On the left side, there is a sidebar menu titled "Advanced Setup" with various configuration options. The "Wireless MAC Authentication" option is selected. The main content area is titled "Wireless MAC Authentication" and contains instructions to enter a MAC address to block or allow access. There are two radio buttons for "Accept all clients" and "Deny all clients". Below this is an "Exception List" with a table containing one entry with a blue header and an empty body. To the right of the table are "Add" and "Remove" buttons. A "Client MAC address:" label is followed by an empty input field. At the bottom of the main area are "Back" and "Next" buttons. In the sidebar, the "Save and Restart" button is highlighted with a red border. The footer of the page reads "Copyright 2001-2002 Actiontec Electronics Inc."

ActiontecTM

[Main] [**Setup**] [status] [Utilities] [Help]

Advanced Setup

- WAN IP Address
- Wireless Settings
- Wireless MAC Authentication
- LAN IP Address
- DHCP Server
- Services Blocking
- Website Blocking
- VPN Pass Through
- Remote Management
- Port Forwarding
- DMZ Hosting
- Firewall
- Dynamic Routing
- NAT
- Static Routing
- MAC Address Cloning

Wireless MAC Authentication

Enter the MAC address of the wireless client which you wish to either block or allow access to your network.

Accept all clients
 Deny all clients

Exception List: (should appear like 00:20:e0:00:41:00)

Add Remove

Client MAC address:

Back Next

Save and Restart

Copyright 2001-2002 Actiontec Electronics Inc.