

## How to Configure Windows Live Mail for hotmail.com E-mail

Email Type:  
@hotmail.com



### Use this document if:

- You need to configure Windows Live Mail for @hotmail.com e-mail.

### This document assumes:

- You know your @hotmail.com e-mail address and password.
- Your hotmail.com e-mail address is associated to a Qwest DSL® account.
- You have a working copy of Windows Live Mail.
- You have a working Internet connection.

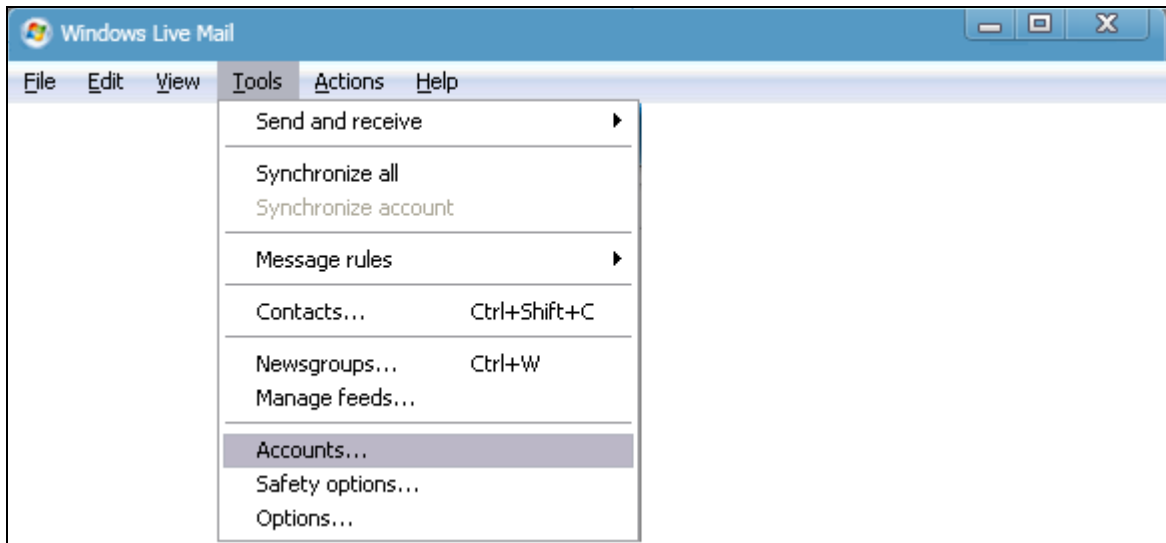
**Incoming/Outgoing server info:** If you are familiar with how to configure Windows Live Mail, use the following information. If you need more help, continue reading.

- Incoming Server: pop3.live.com (SSL enabled)
- Outgoing Server: smtp.live.com (SSL enabled, requires authentication)

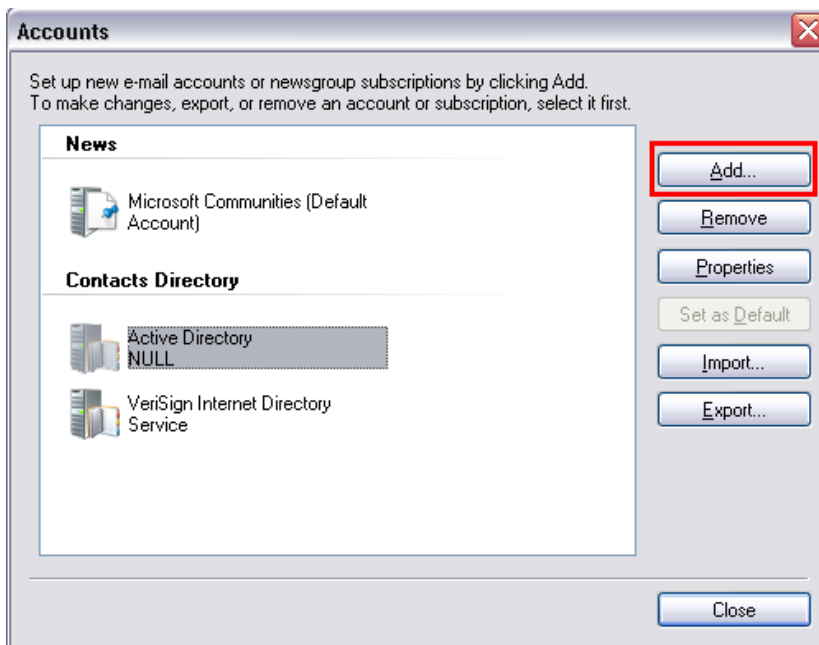
1. Open Windows Live Mail using the icon on your desktop or Start menu.



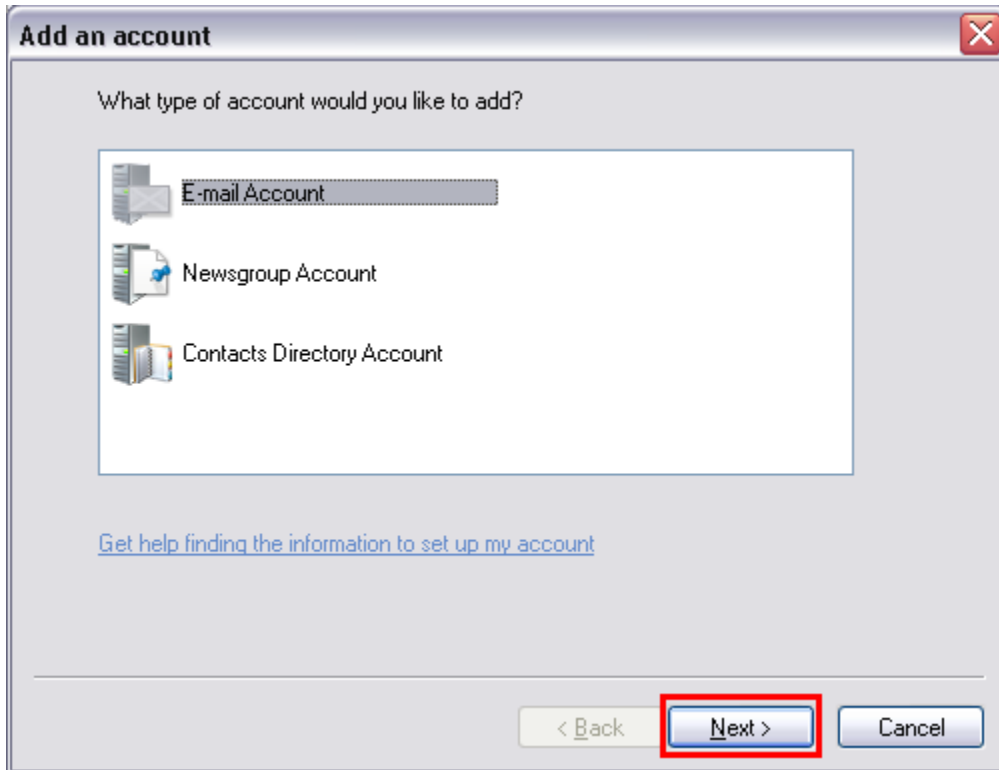
2. Select **Tools**, then **Accounts**. (*note: If you don't see the menu bar at the top of the window, press alt on your keyboard.*)



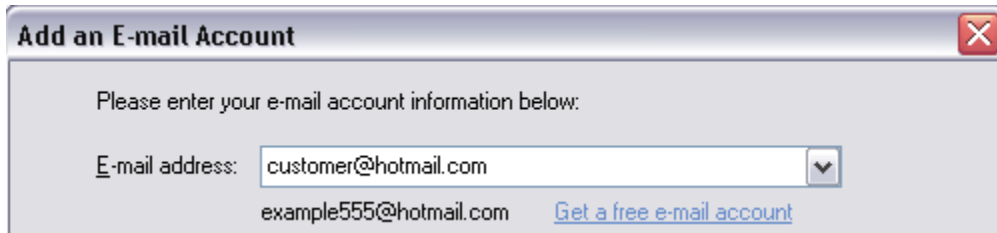
3. Select **Add**.



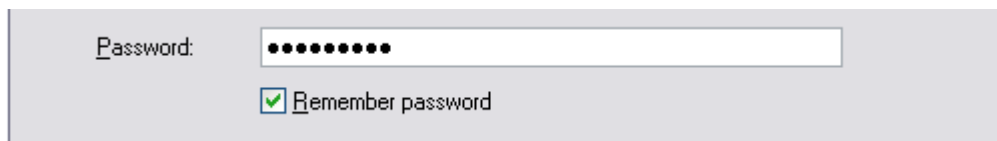
4. Make sure **Email Account** is highlighted and select **Next**.



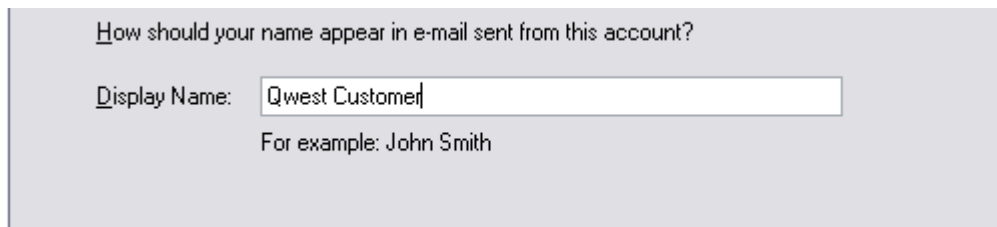
5. Type your full @hotmail.com email address.



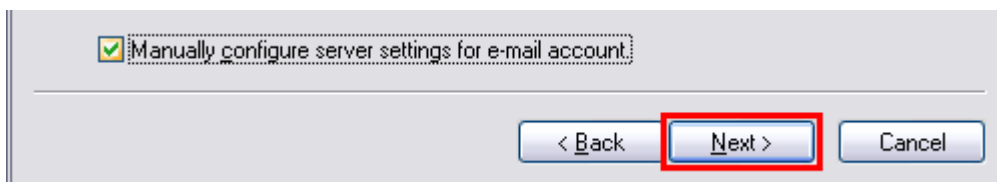
6. Type your password in the 'Password' box. (Remember, passwords are CaSe SeNSiTiVe)



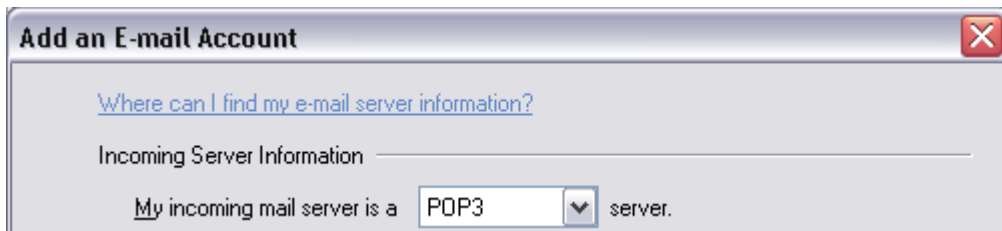
7. Type in your name as you would like it to appear on your outgoing mail.



8. Check the **Manually configure server settings for e-mail account** box and select **Next**.



9. Make sure **POP3** is selected in the 'My incoming mail server is a' dropdown.



**Add an E-mail Account**

[Where can I find my e-mail server information?](#)

Incoming Server Information

My incoming mail server is a **POP3** server.

10. Type **pop3.live.com** in the 'Incoming server' and check the box next to **This server requires a secure connection (SSL)**. Make sure the 'Port' number is 995.



Incoming server: **pop3.live.com** Port: **995**

This server requires a secure connection (SSL)

Log on using: Clear text authentication

11. Add **@hotmail.com** to end of the 'Login ID' so that your full email address is shown.



Login ID (if different from e-mail address):

customer@hotmail.com

12. Type **smtp.live.com** in the 'Outgoing server' field and check the box next to **This server requires a secure connection (SSL)** and **My outgoing server requires authentication**. Make sure the 'Port' number is 25.



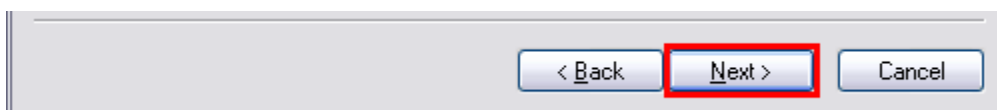
Outgoing Server Information

Outgoing server: **smtp.live.com** Port: **25**

This server requires a secure connection (SSL)

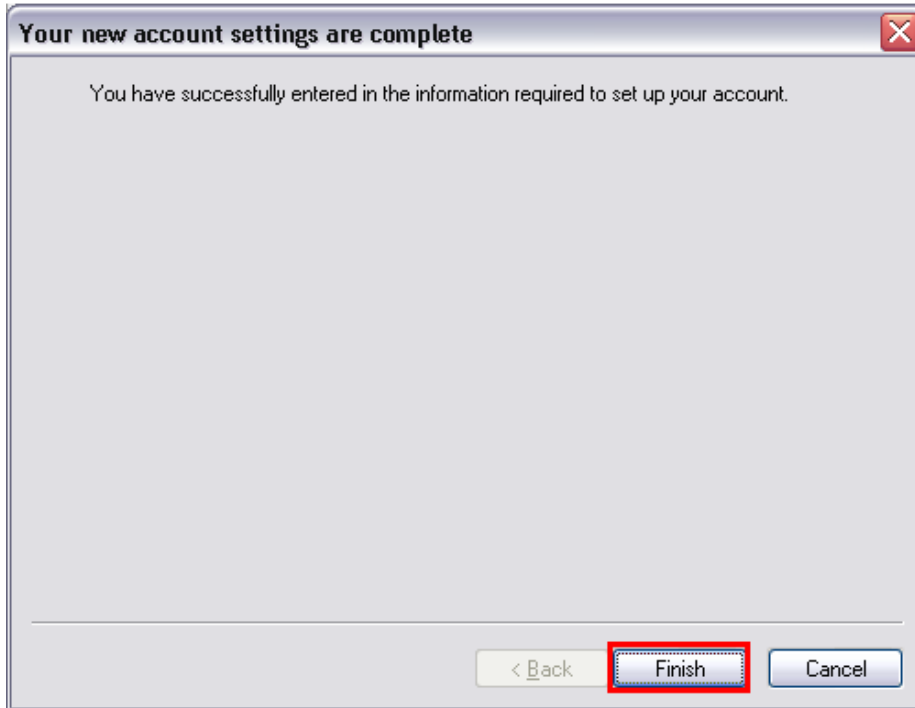
My outgoing server requires authentication

13. Select **Next**.



< Back **Next >** Cancel

14. Select **Finish**.



15. Select **Close** to finish the setup.

