



How to Configure Windows Live Mail for qwest.net E-mail

Email Type:
@qwest.net



Use this document if:

- You need to configure Windows Live Mail for qwest.net e-mail.

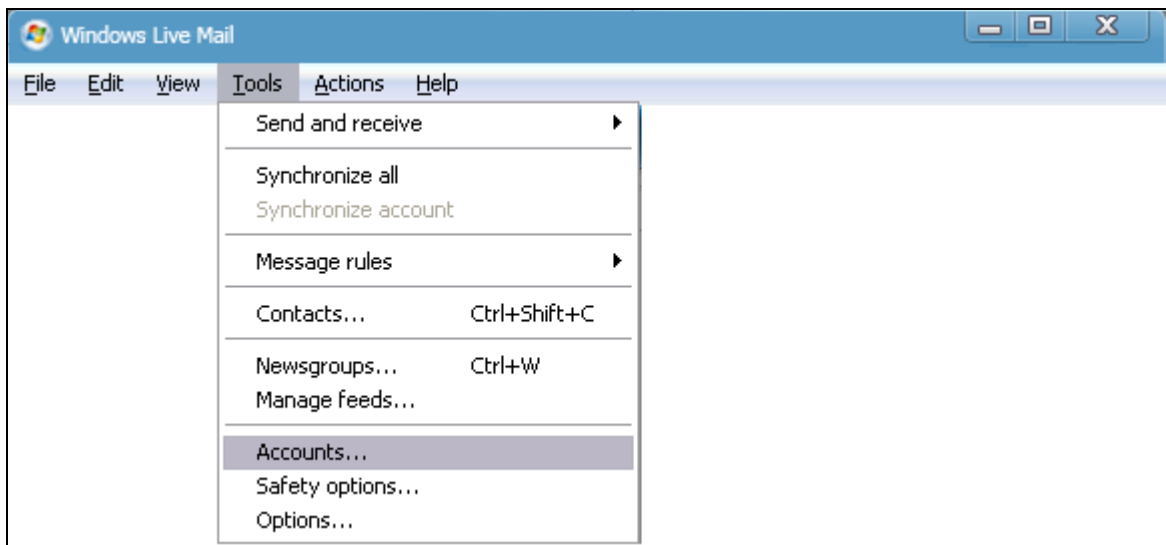
This document assumes:

- You know your qwest.net e-mail address and password.
- You have a working copy of Windows Live Mail.
- You have a working Internet connection.

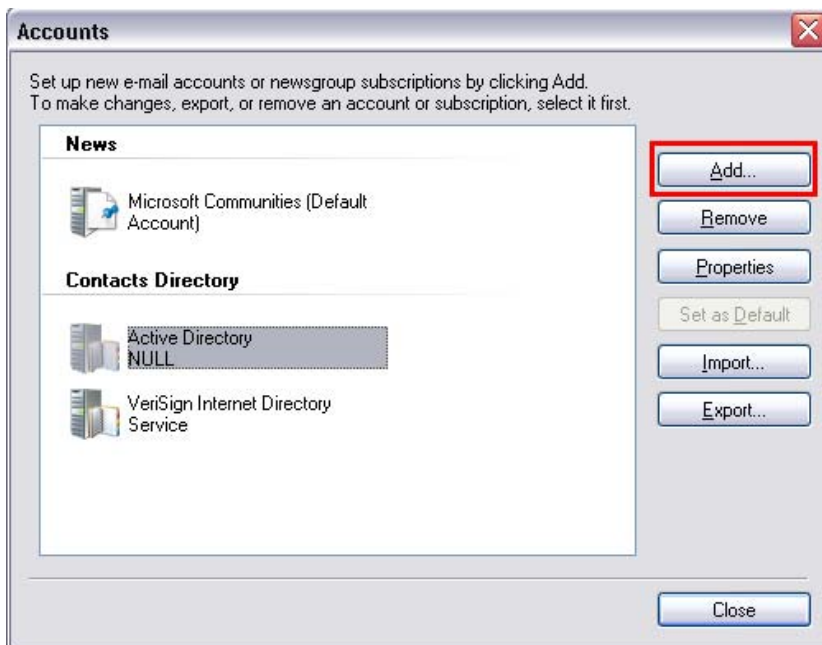
1. Open Windows Live Mail using the icon on your desktop or Start menu.



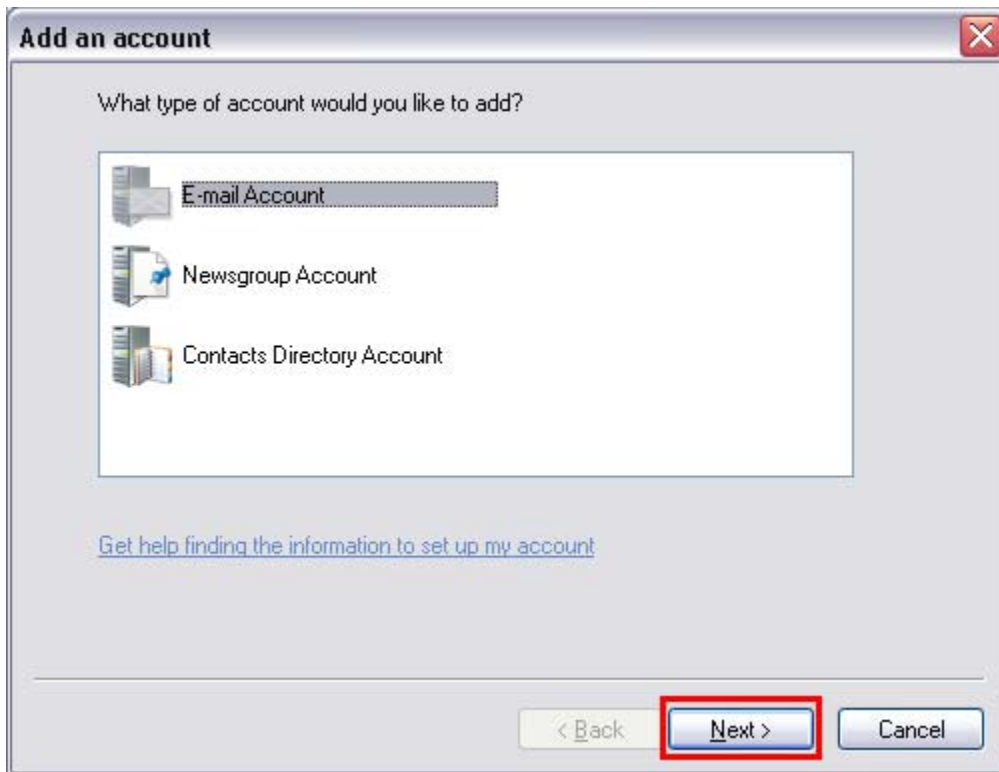
2. Select **Tools**, then **Accounts**. (*note: If you don't see the menu bar at the top of the window, press alt on your keyboard.*)



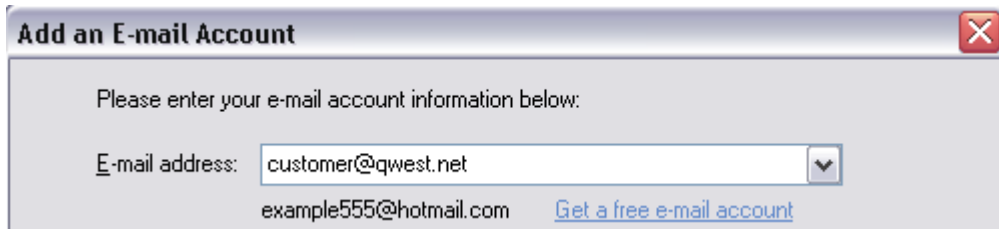
3. Select **Add**.



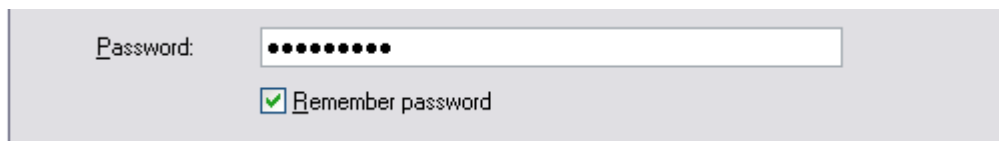
4. Make sure **Email Account** is highlighted and select **Next**.



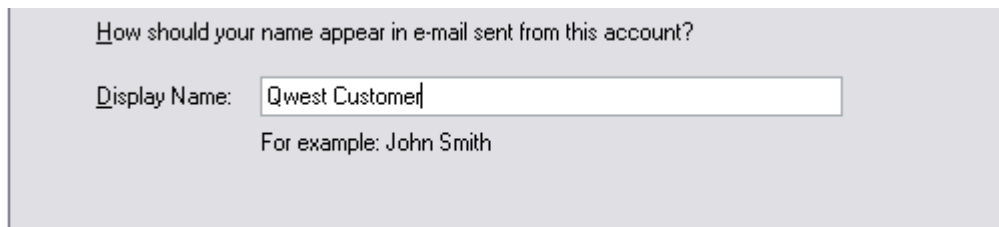
5. Type your full qwest.net email address.



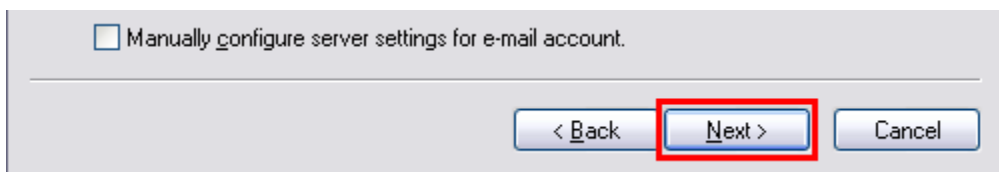
6. In the 'Password' box, type in your password. (Remember, passwords are CaSe SeNSiTiVe)



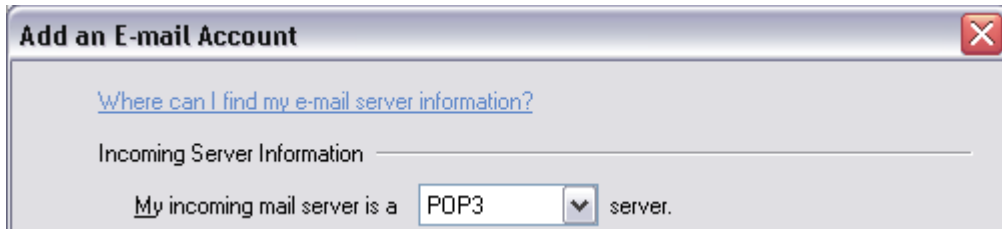
7. Type in your name as you would like it to appear on your outgoing mail.



8. Select **Next**.



9. Make sure **POP3** is selected in the 'My incoming mail server is a' dropdown.




Add an E-mail Account

[Where can I find my e-mail server information?](#)

Incoming Server Information

My incoming mail server is a **POP3** server.

10. In the 'Incoming server' field, type in the closest mail server based on the list at the end of this document.

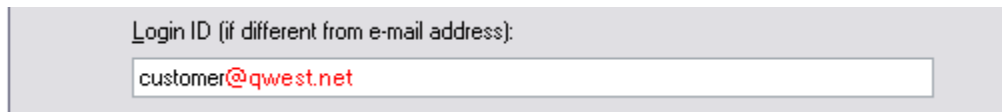


Incoming server: **pop.localhost.qwest.net** Port: 110

This server requires a secure connection (SSL)

Log on using: Clear text authentication

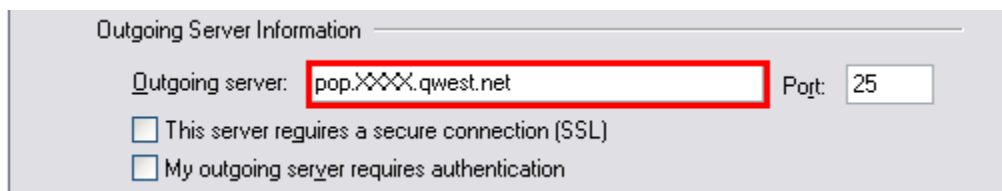
11. Add **@qwest.net** to end of the 'Login ID' so that your full email address is shown.



Login ID (if different from e-mail address):

customer@qwest.net

12. In the 'Outgoing server' field, type in the closest mail server based on the list at the end of this document.



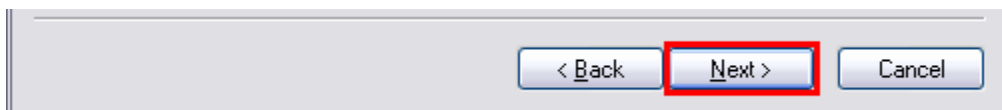
Outgoing Server Information

Outgoing server: **pop.localhost.qwest.net** Port: 25

This server requires a secure connection (SSL)

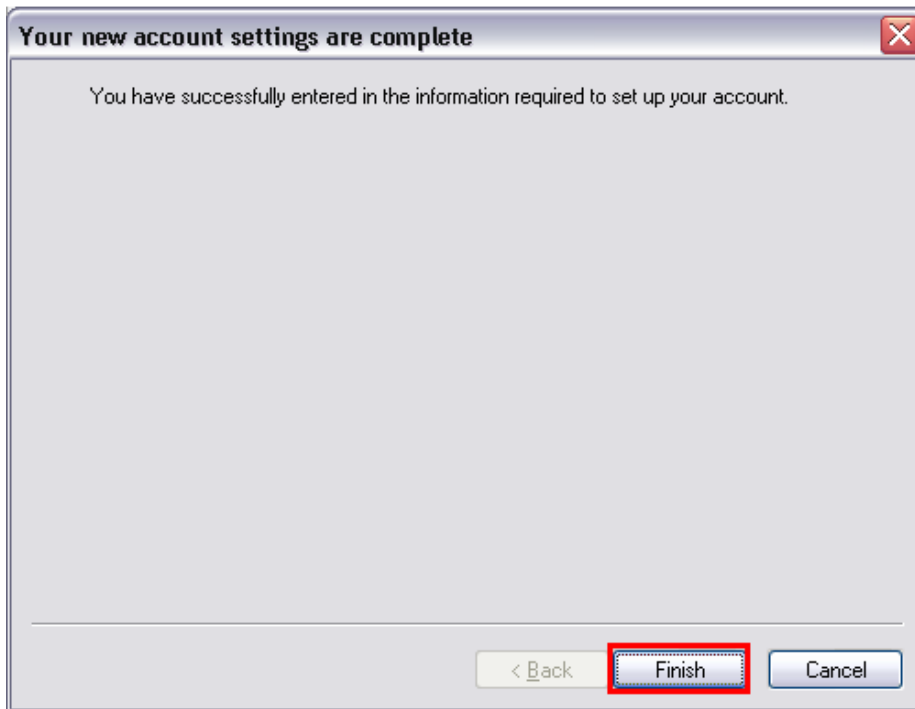
My outgoing server requires authentication

13. Select **Next**.

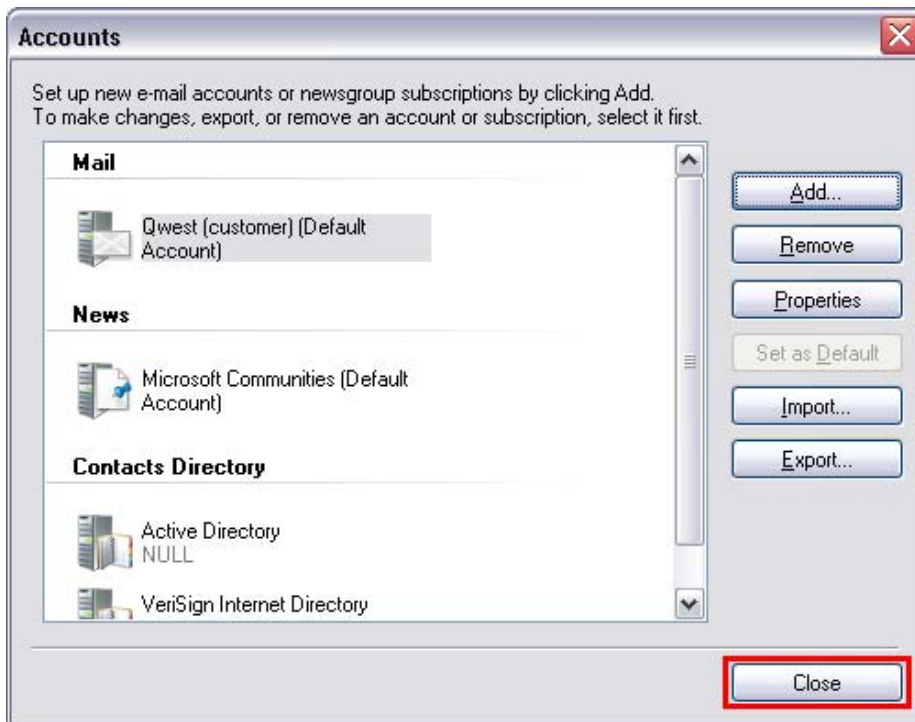


< Back **Next >** Cancel

14. Select **Finish**.



15. Select **Close** to finish the setup.





Qwest Mail Servers

Arizona

- Tucson- pop.tcsn.qwest.net
- Phoenix- pop.phnx.qwest.net

Colorado

- Colorado Springs- pop.clsp.qwest.net
- Denver- pop.dnvr.qwest.net

Idaho

- Boise- pop.bois.qwest.net

Iowa

- Des Moines- pop.desm.qwest.net
- Cedar Rapids- pop.cdrr.qwest.net
- Davenport- pop.dvnp.qwest.net

Minnesota

- Duluth- pop.dlth.qwest.net
- Minneapolis/St. Paul- pop.mpls.qwest.net
- Rochester- pop.roch.qwest.net
- Saint Cloud- pop.stcd.qwest.net

Montana

- Billings- pop.blng.qwest.net
- Missoula- pop.mssl.qwest.net

Nebraska

- Omaha- pop.omah.qwest.net

New Mexico

- Albuquerque- pop.albq.qwest.net

North Dakota

- Bismarck- pop.bsmr.qwest.net
- Fargo- pop.farg.qwest.net

Oregon

- Eugene- pop.eugn.qwest.net
- Portland- pop.ptld.qwest.net

South Dakota

- Sioux Falls- pop.sxfl.qwest.net

Utah

- Salt Lake City- pop.slkc.qwest.net

Washington

- Seattle- pop.sttl.qwest.net
- Spokane- pop.spkn.qwest.net

Wyoming

- Cheyenne- pop.chyn.qwest.net