



How to Configure Windows Live Mail for yourdomainname.com E-mail

Email Type:
@yourdomainname.com



Use this document if:

- You need to configure Windows Live Mail for yourdomainname.com e-mail

This document assumes:

- You know your yourdomainname.com e-mail username and password
- You have a working copy of Windows Live Mail
- You have a working Internet connection
- You are a Qwest.net customer

Unsure if you are a Qwest.net customer?

There are 2 Qwest offerings that support vanity domains and email (e.g. designer@pagedesigner.com), Qwest.net and Qwestoffice.net. This document is for Qwest.net customers only. If you are a Qwestoffice.net customer go to <http://qwestoffice.com/newemailtutorials> for more help.

If you are not sure if Qwest.net is your e-mail provider:

1. Go to whois.net
2. Enter your domain name in the 'WHOIS Lookup' field
3. Click Go
4. Scroll down toward the bottom of the page. Locate the 'Name Servers' section
5. If you see the following in the 'Name Servers' Section, this document applies to you:

AUTHNS1.MPLS.QWEST.NET
AUTHNS2.DNVR.QWEST.NET
AUTHNS3.STTL.QWEST.NET

If you see the following go to <http://qwestoffice.com/newemailtutorials> for help:

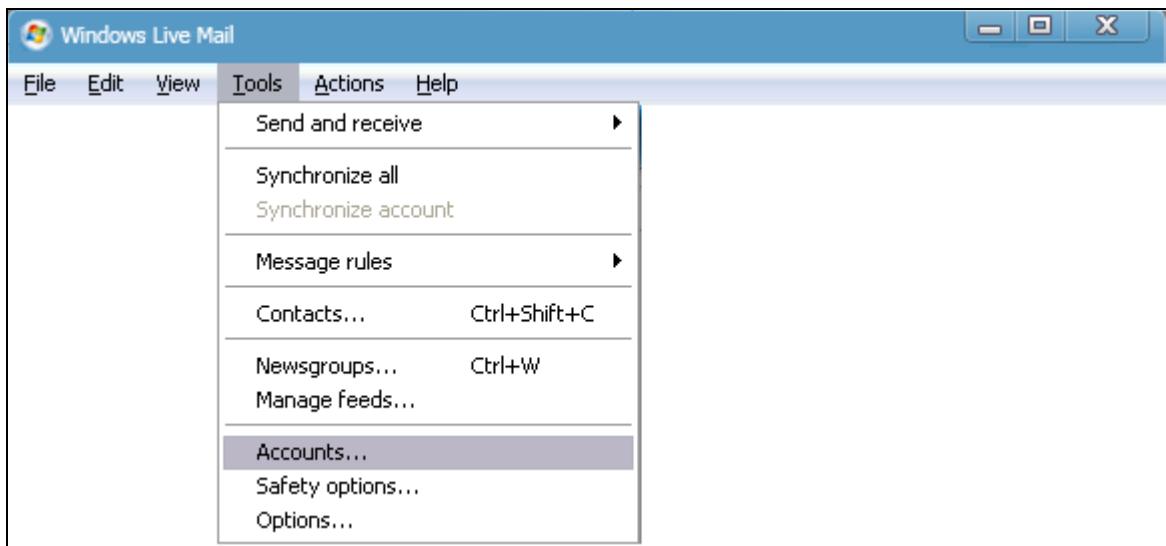
a.dns.qwestoffice.com
b.dns.qwestoffice.com

If any other server name is listed, your domain is pointed to someone other than Qwest. You will need to contact your email provider who is hosting your custom domain for further assistance.

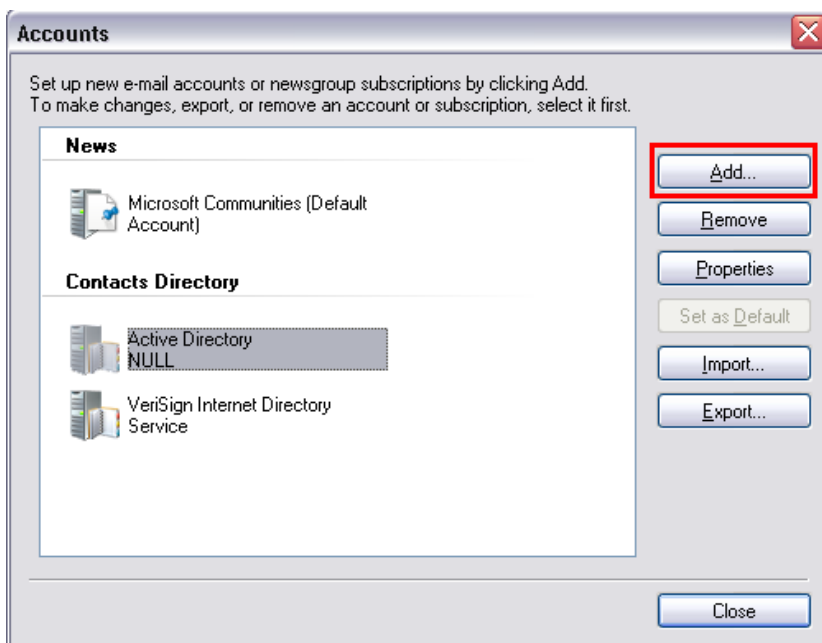
1. Open Windows Live Mail using the icon on your desktop or Start menu.



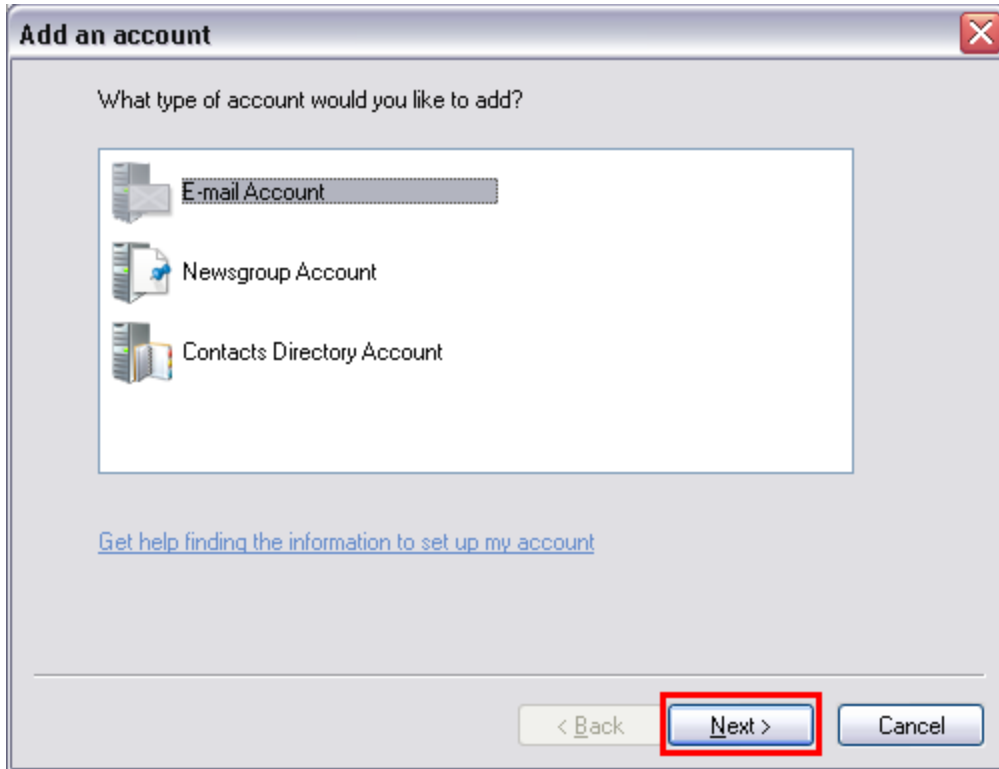
2. Select **Tools**, then **Accounts**. (*note: If you don't see the menu bar at the top of the window, press alt on your keyboard.*)



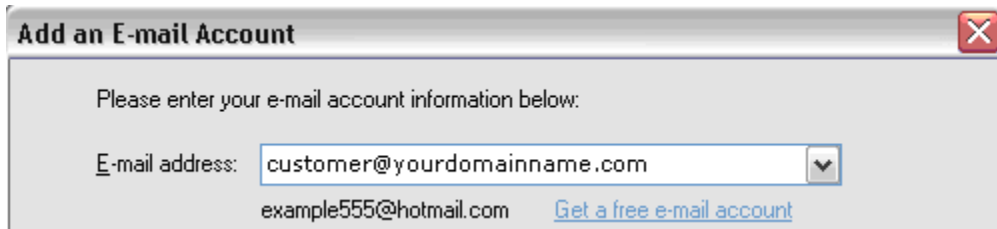
3. Select **Add**.



4. Make sure **Email Account** is highlighted and select **Next**.



5. Type your full yourdomainname.com email address.



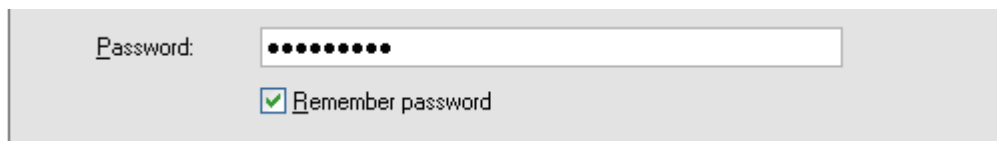
Add an E-mail Account

Please enter your e-mail account information below:

E-mail address: ▼

example555@hotmail.com [Get a free e-mail account](#)

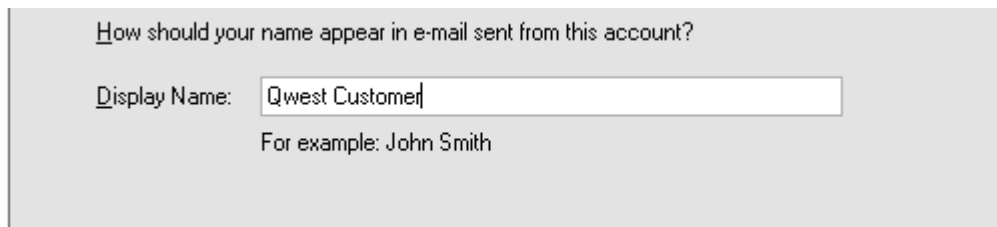
6. In the 'Password' box, type in your password. (Remember, passwords are CaSe SeNSiTiVe)



Password:

Remember password

7. Type in your name as you would like it to appear on your outgoing mail.

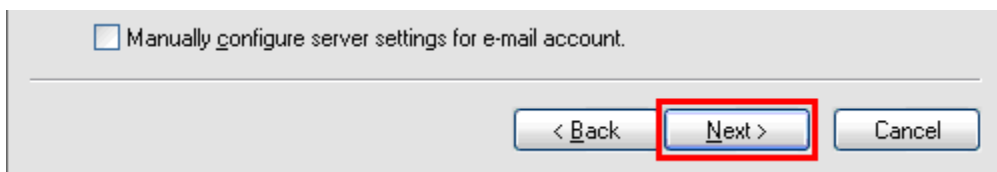


How should your name appear in e-mail sent from this account?

Display Name:

For example: John Smith

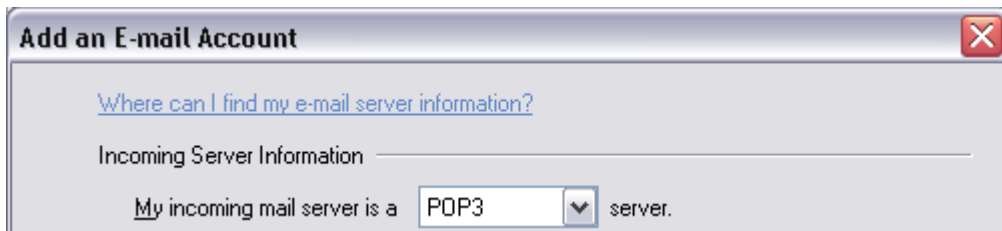
8. Select **Next**.



Manually configure server settings for e-mail account.

< Back **Next >** Cancel

9. Make sure **POP3** is selected in the 'My incoming mail server is a' dropdown.



Add an E-mail Account

[Where can I find my e-mail server information?](#)

Incoming Server Information

My incoming mail server is a **POP3** server.

10. In the 'Incoming server' field, type in the closest mail server based on the list at the end of this document.

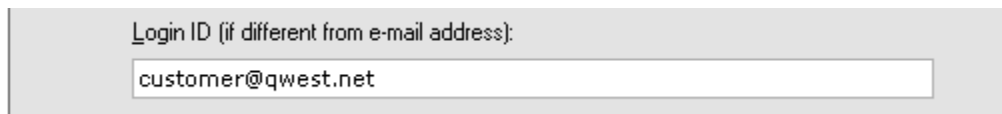


Incoming server: **pop.####.qwest.net** Port: 110

This server requires a secure connection (SSL)

Log on using: Clear text authentication

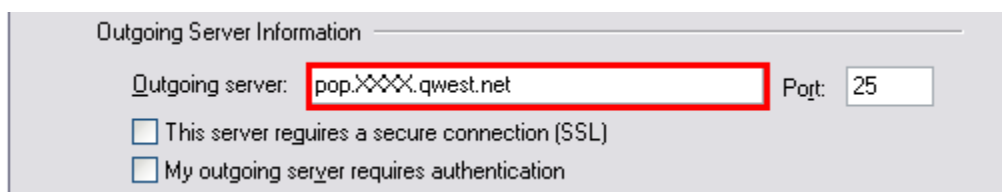
11. Type your user name under 'Login ID'. This is NOT the same as your email address.



Login ID (if different from e-mail address):

customer@qwest.net

12. In the 'Outgoing server' field, type in the closest mail server based on the list at the end of this document.



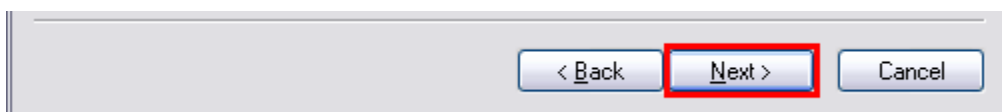
Outgoing Server Information

Outgoing server: **pop.####.qwest.net** Port: 25

This server requires a secure connection (SSL)

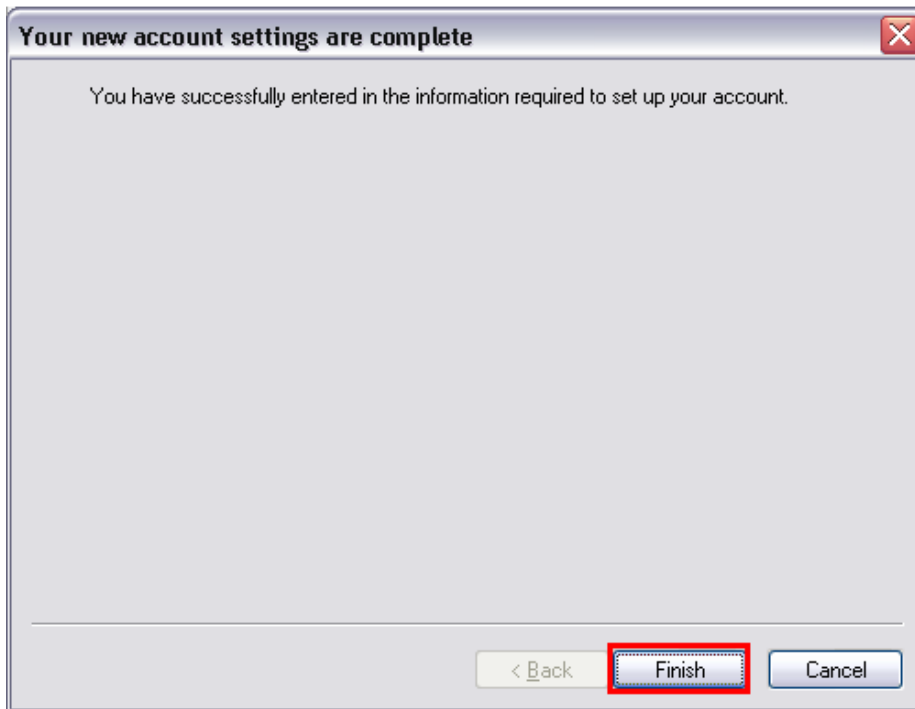
My outgoing server requires authentication

13. Select **Next**.

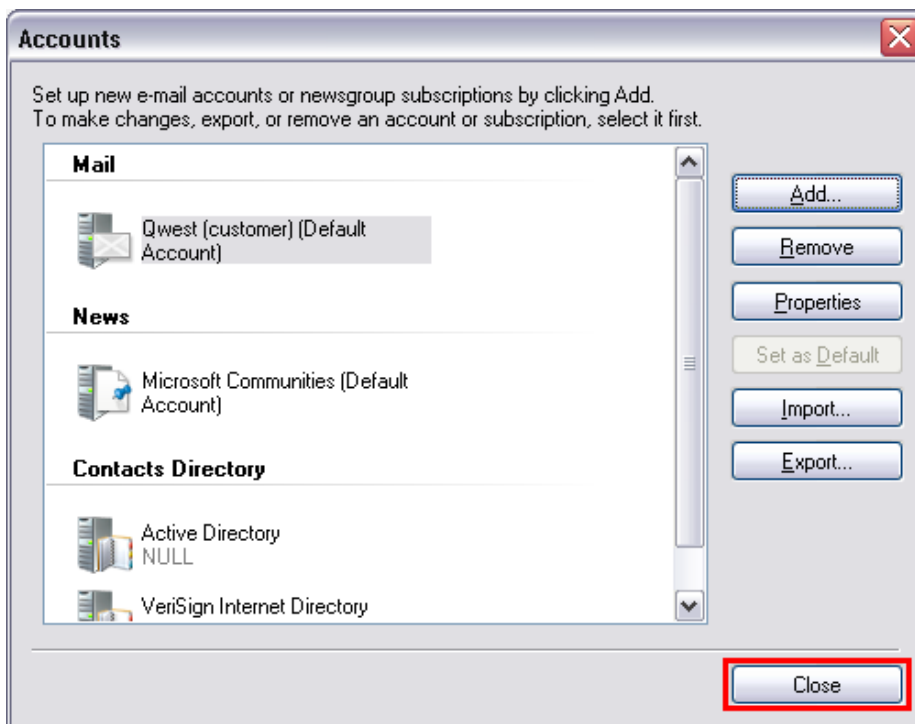


< Back **Next >** Cancel

14. Select **Finish**.



15. Select **Close** to finish the setup.





Qwest Mail Servers

Arizona

- Tucson- pop.tcsn.qwest.net
- Phoenix- pop.phnx.qwest.net

Colorado

- Colorado Springs- pop.clsp.qwest.net
- Denver- pop.dnvr.qwest.net

Idaho

- Boise- pop.bois.qwest.net

Iowa

- Des Moines- pop.desm.qwest.net
- Cedar Rapids- pop.cdrr.qwest.net
- Davenport- pop.dvnp.qwest.net

Minnesota

- Duluth- pop.dlth.qwest.net
- Minneapolis/St. Paul- pop.mpls.qwest.net
- Rochester- pop.roch.qwest.net
- Saint Cloud- pop.stcd.qwest.net

Montana

- Billings- pop.blng.qwest.net
- Missoula- pop.mssl.qwest.net

Nebraska

- Omaha- pop.omah.qwest.net

New Mexico

- Albuquerque- pop.albq.qwest.net

North Dakota

- Bismarck- pop.bsmr.qwest.net
- Fargo- pop.farg.qwest.net

Oregon

- Eugene- pop.eugn.qwest.net
- Portland- pop.ptld.qwest.net

South Dakota

- Sioux Falls- pop.sxfl.qwest.net

Utah

- Salt Lake City- pop.slkc.qwest.net

Washington

- Seattle- pop.sttl.qwest.net
- Spokane- pop.spkn.qwest.net

Wyoming

- Cheyenne- pop.chyn.qwest.net