

How to Configure Eudora 7 for q.com E-mail

Email Type:
@q.com



Use this document if:

- You need to configure Eudora 7 for q.com e-mail.

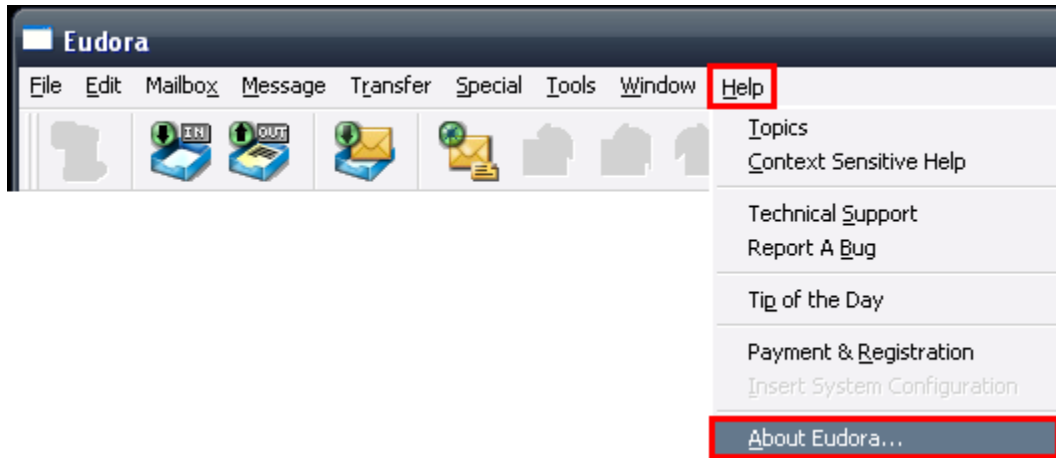
This document assumes:

- You know your q.com e-mail address and password.
- Your q.com e-mail address is associated to a Qwest DSL® account.
- You have a working copy of Eudora 7.
- You have a working Internet connection.

Incoming/Outgoing server info: If you are familiar with how to configure Eudora 7, use the following information. If you need more help, continue reading.

- Incoming Server: pop3.q.com (SSL enabled)
- Outgoing Server: smtp.q.com (SSL enabled, requires authentication)

This document only applies to Eudora 7.1. To find out what version you are using, select **Help** then **About Eudora**.



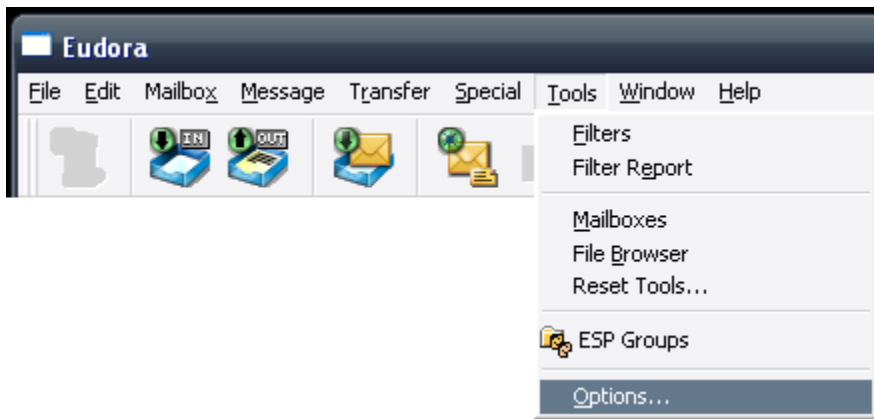
This will bring up the 'About' screen. Select the **Close** button after finding the Eudora Version. If the 'About' screen looks like the one below, continue reading.



1. Open Eudora using the icon on your desktop or Start menu.



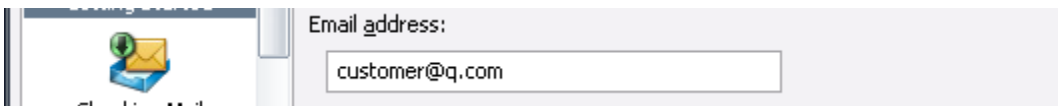
2. Select **Tools**, then **Options**.



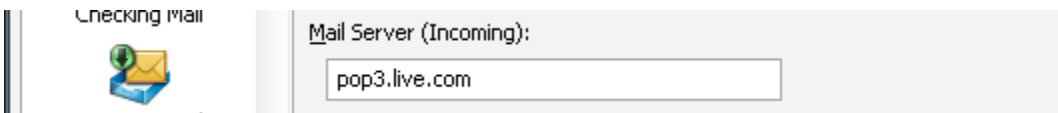
3. Select **Getting Started** on the left. Then, enter your **Real name**. This is the name that people see when you send them an email.



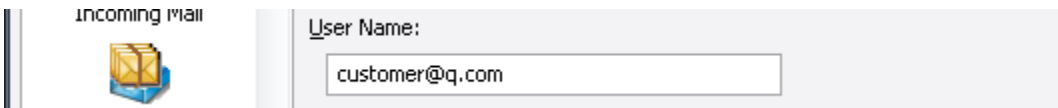
4. Enter your **Email address**.



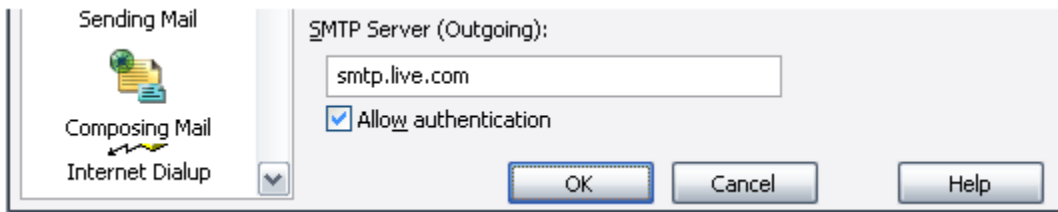
5. Enter your **Mail Server (Incoming)**.



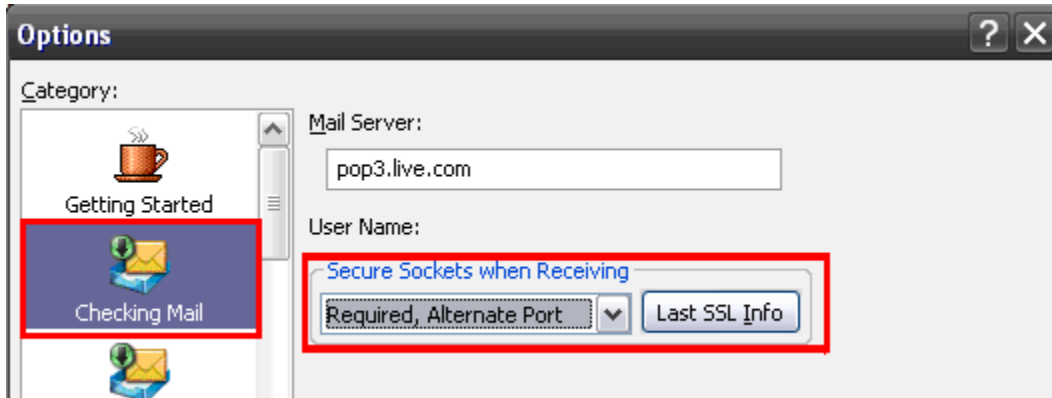
6. Enter your **User Name**. This is the same as your email address.



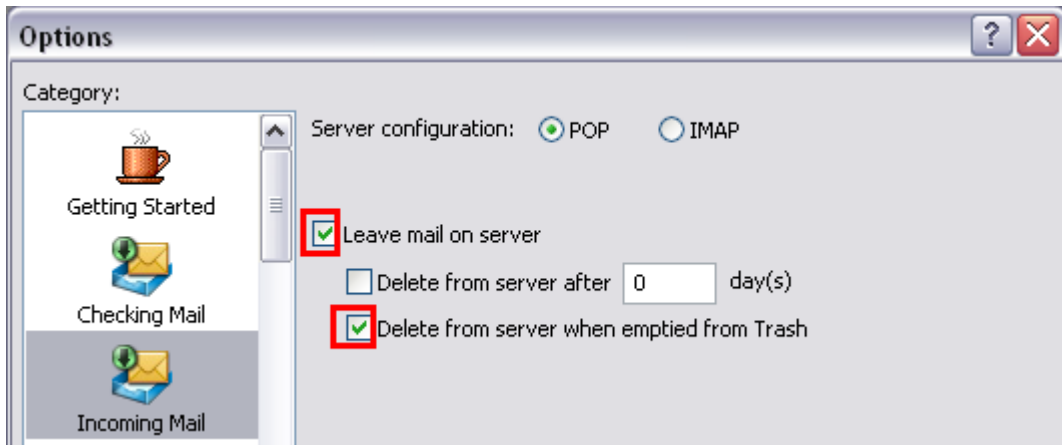
7. Enter your **SMTP Server (Outgoing)**.



8. Select **Checking Mail** on the left. Select **Required, Alternate Port** from the 'Secure Sockets when Receiving' dropdown.



9. Select **Incoming Mail**. Place a checkmark next to:
 - a. **Leave mail on server** and
 - b. **Delete from server when emptied from Trash.**



10. Select **Sending Mail** on the left. Select **Required, STARTTLS** from the 'Secure Sockets when Sending' dropdown. Select **OK**.



11. Select the Check Mail icon.



12. In the Password field, type your password. (passwords are CaSe sEnSiTivE), and select **OK**. If you want Eudora to remember your password in the future, check the **Remember password for this personality** box.

A screenshot of a Windows-style dialog box titled "Enter Password". The dialog box has a dark title bar with a question mark and a close button. The main area contains the text "Please enter the current password for" followed by several fields: "Personality: <Dominant>", "Username: customer@q.com", "Server: pop3.live.com", and "Password:" followed by an empty text input field. Below the password field is a checkbox labeled "Remember password for this personality". At the bottom left is a small icon of a mail folder, and at the bottom right are two buttons: "OK" and "Cancel".

13. Congratulations, you have configured Eudora 7 for your q.com e-mail.