

## How to Configure Eudora 7 for live.com E-mail

Email Type:  
@live.com



**Use this document if:**

- You need to configure Eudora 7 for live.com e-mail.

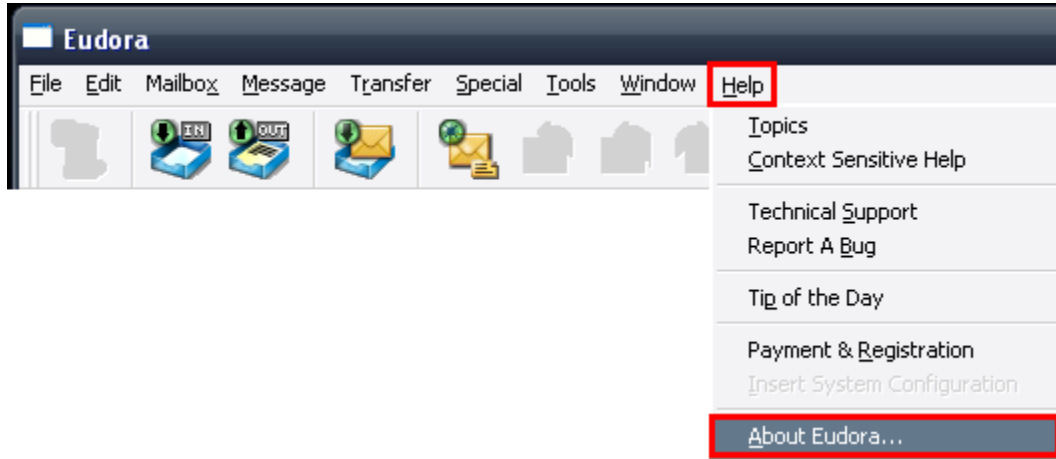
**This document assumes:**

- You know your live.com e-mail address and password.
- Your live.com e-mail address is associated to a Qwest DSL® account.
- You have a working copy of Eudora 7.
- You have a working Internet connection.

**Incoming/Outgoing server info:** If you are familiar with how to configure Eudora 7, use the following information. If you need more help, continue reading.

- Incoming Server: pop3.live.com (SSL enabled)
- Outgoing Server: smtp.live.com (SSL enabled, requires authentication)

This document only applies to Eudora 7.1. To find out what version you are using, select **Help** then **About Eudora**.



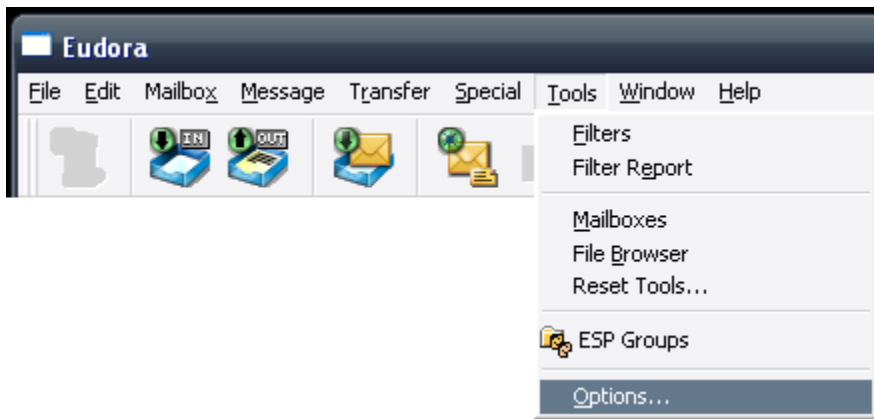
This will bring up the 'About' screen. Select the **Close** button after finding the Eudora Version. If the 'About' screen looks like the one below, continue reading.



1. Open Eudora using the icon on your desktop or Start menu.



2. Select **Tools**, then **Options**.



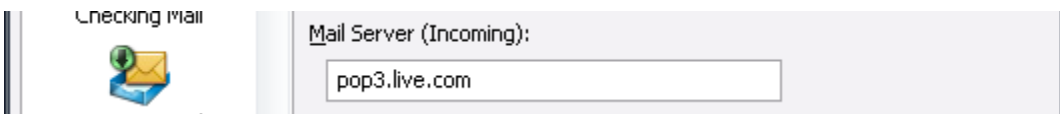
3. Select **Getting Started** on the left. Then, enter your **Real name**. This is the name that people see when you send them an email.



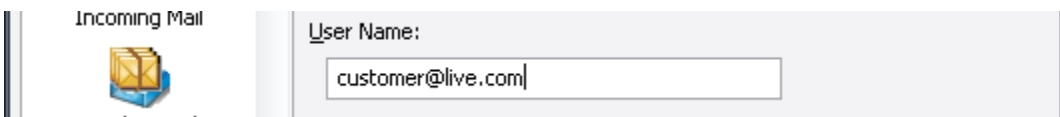
4. Enter your **Email address**.



5. Enter your **Mail Server (Incoming)**.



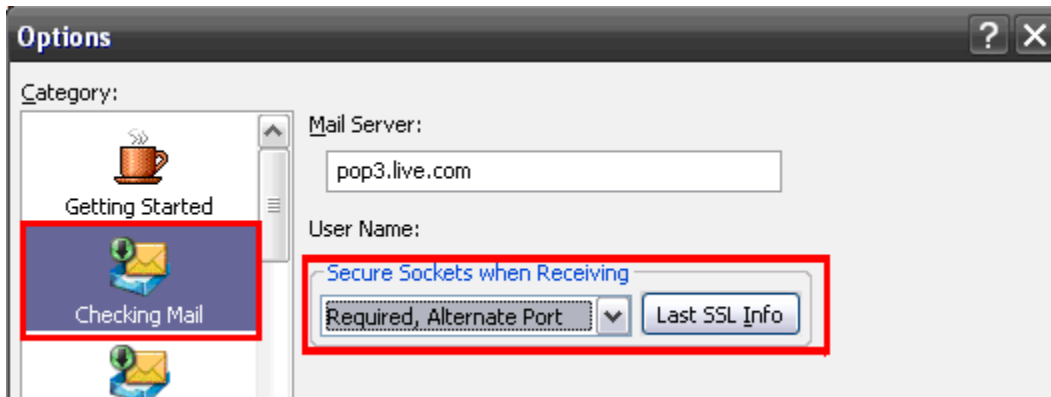
6. Enter your **User Name**. This is the same as your email address.



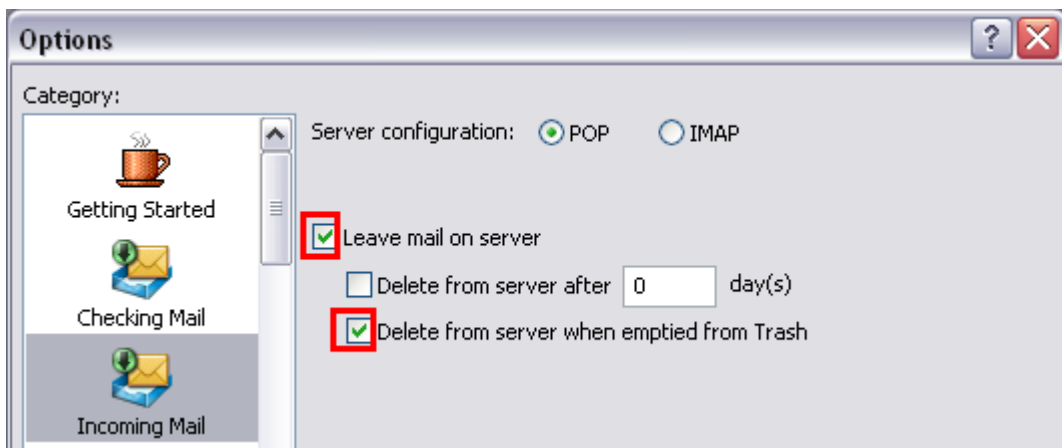
7. Enter your **SMTP Server (Outgoing)**.



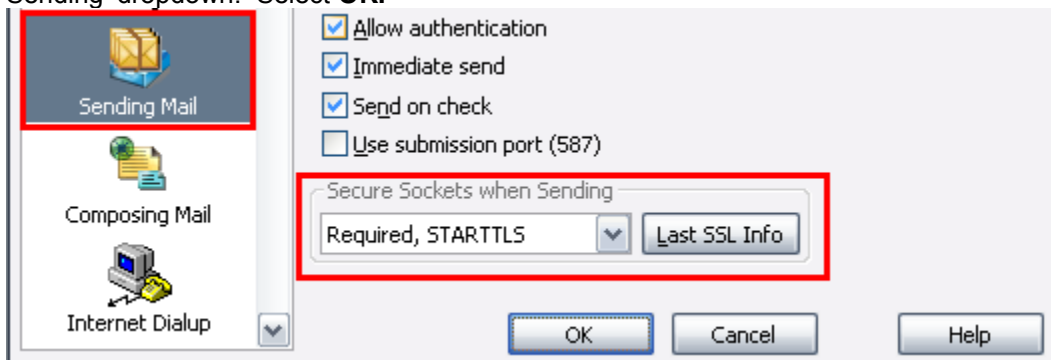
8. Select **Checking Mail** on the left. Select **Required, Alternate Port** from the 'Secure Sockets when Receiving' dropdown.



9. Select **Incoming Mail**. Place a checkmark next to:
  - a. **Leave mail on server** and
  - b. **Delete from server when emptied from Trash.**



10. Select **Sending Mail** on the left. Select **Required, STARTTLS** from the 'Secure Sockets when Sending' dropdown. Select **OK**.



11. Select the Check Mail icon.



12. In the Password field, type your password. (passwords are CaSe sEnSiTivE), and select **OK**. If you want Eudora to remember your password in the future, check the **Remember password for this personality** box.

A screenshot of the 'Enter Password' dialog box in Eudora. The dialog has a title bar with a question mark and a close button. The text inside reads: 'Please enter the current password for'. Below this, it shows 'Personality: <Dominant>', 'Username: customer@live.com', and 'Server: pop3.live.com'. There is a text input field for the 'Password:' label. Below the password field is a checkbox labeled 'Remember password for this personality'. At the bottom left is a small icon of a mail folder, and at the bottom right are 'OK' and 'Cancel' buttons.

**Enter Password** ? X

Please enter the current password for

Personality: <Dominant>

Username: customer@live.com

Server: pop3.live.com

Password:

Remember password for this personality



13. Congratulations, you have configured Eudora 7 for your live.com e-mail.