

## How to Configure Entourage for qwest.net E-mail

**Email Type:**  
**@qwest.net**



**Use this document if:**

- You need to configure Entourage for qwest.net e-mail.

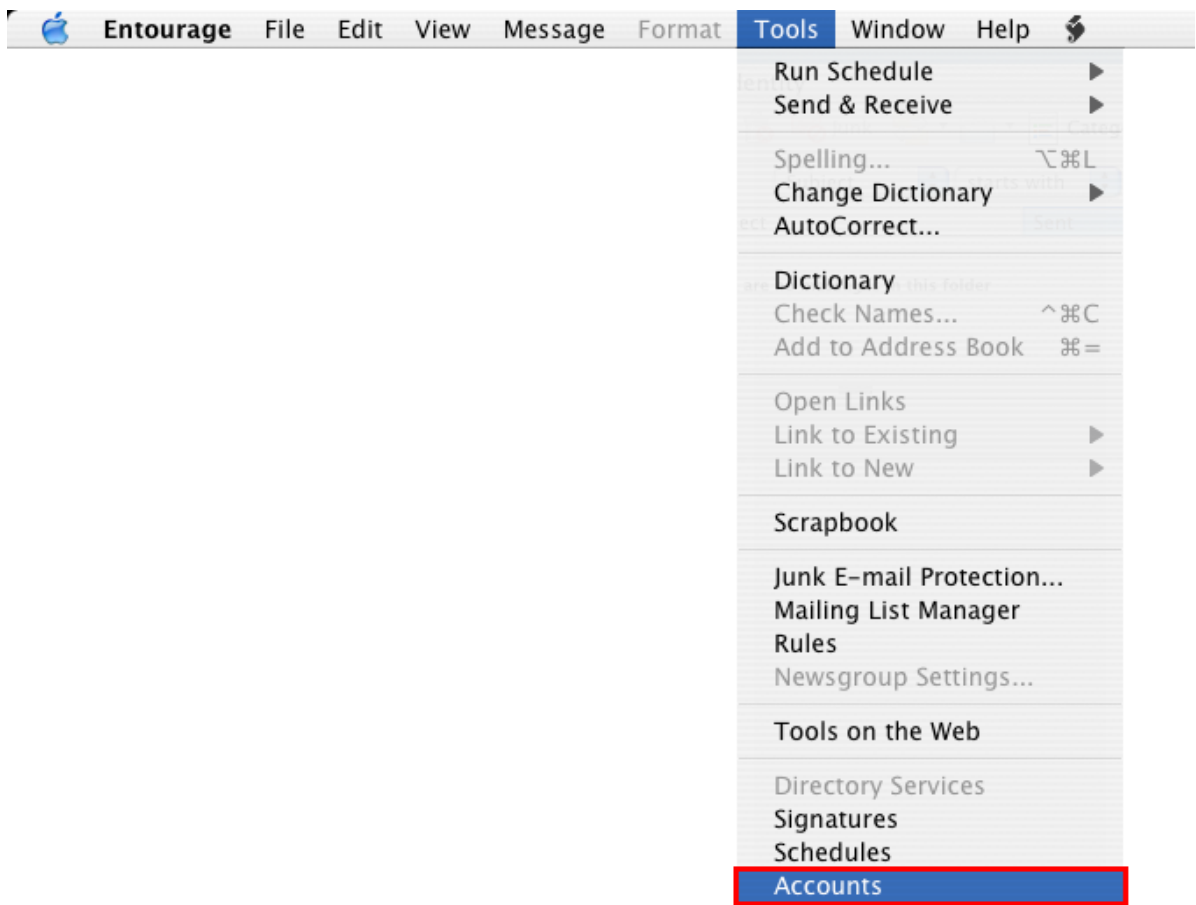
**This document assumes:**

- You know your qwest.net e-mail address and password.
- Your qwest.net e-mail address is associated to a Qwest DSL® account.
- You have a working copy of Entourage.
- You have a working Internet connection.

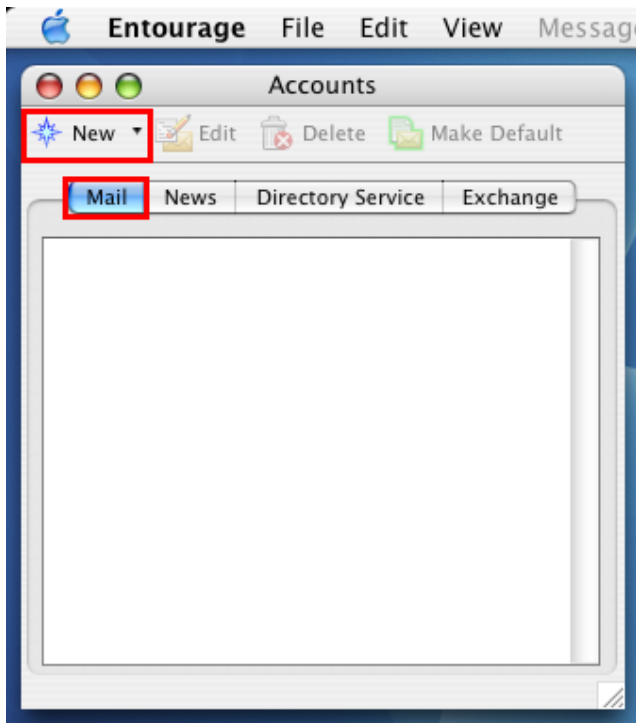
1. Open Entourage using the icon on your dock or by selecting the icon in your Applications folder.



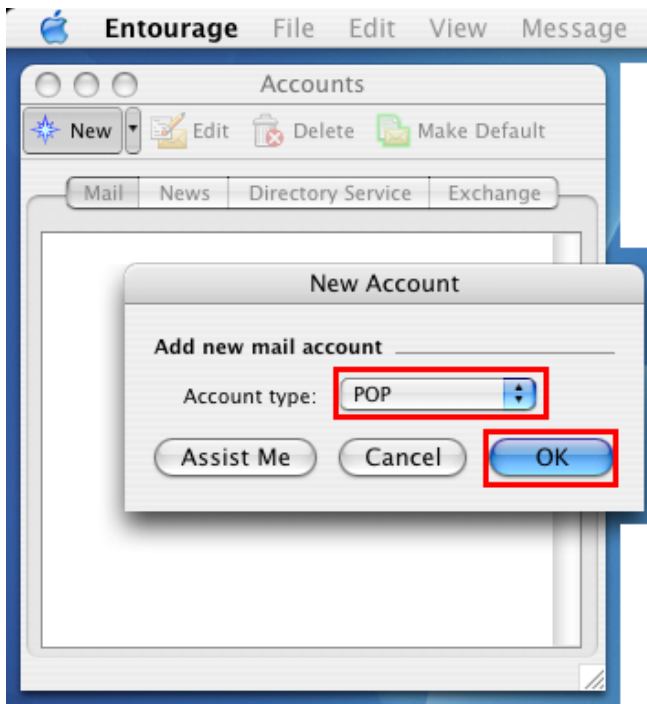
2. Select **Tools** then **Accounts** from the toolbar at the top.



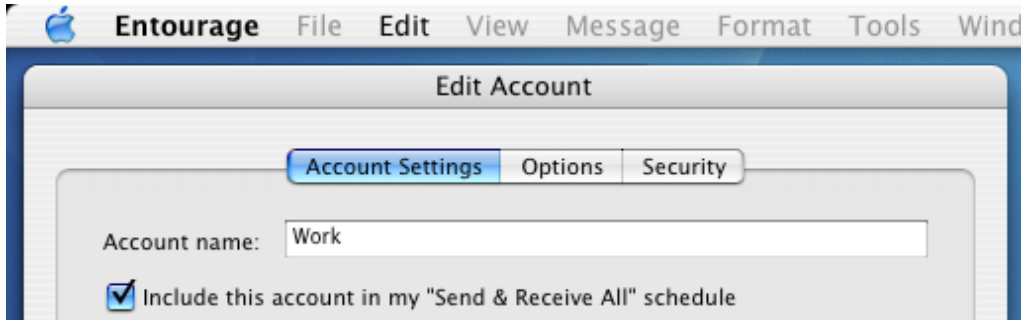
3. Select the **Mail** tab. Then, select the **New** button.



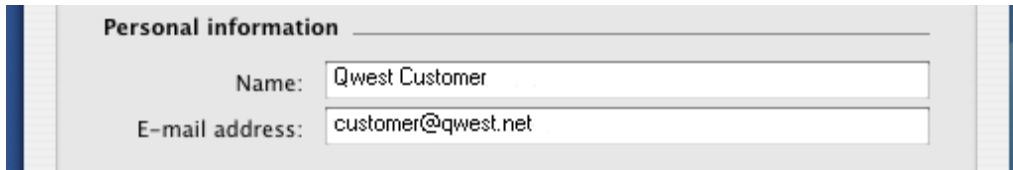
4. In the 'Account type' field, select **POP**. Then, select **OK**.



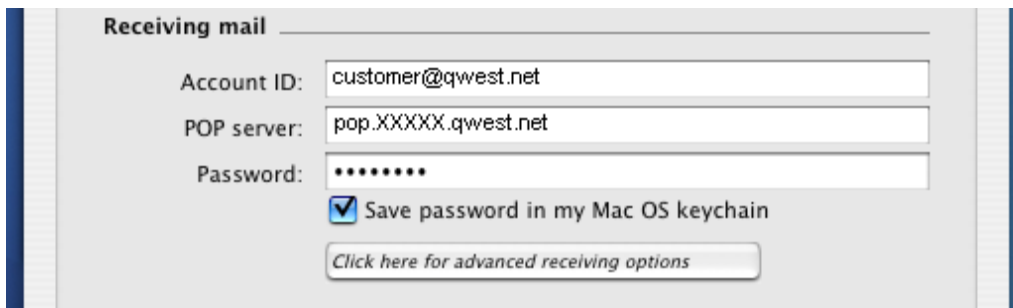
5. Enter a name you would like to identify this account. This can be helpful when using multiple email accounts within Entourage.



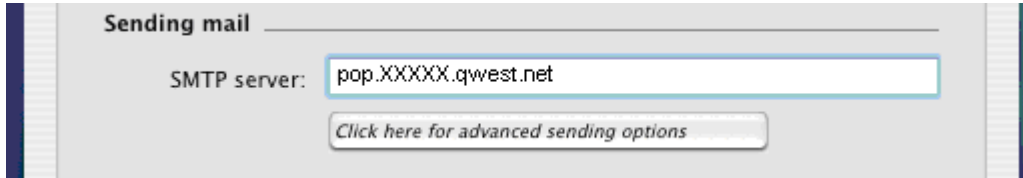
6. Enter your name as you would like it to appear in your outgoing mail. Then, enter your full @qwest.net email address.



7. In the 'Account ID' field, enter your full @qwest.net email address. Next, type in the closest mail server on the list located at the **end of this document**. Then, enter your email account password.



8. In the 'SMTP server' field, enter the same server name you entered in the previous step.

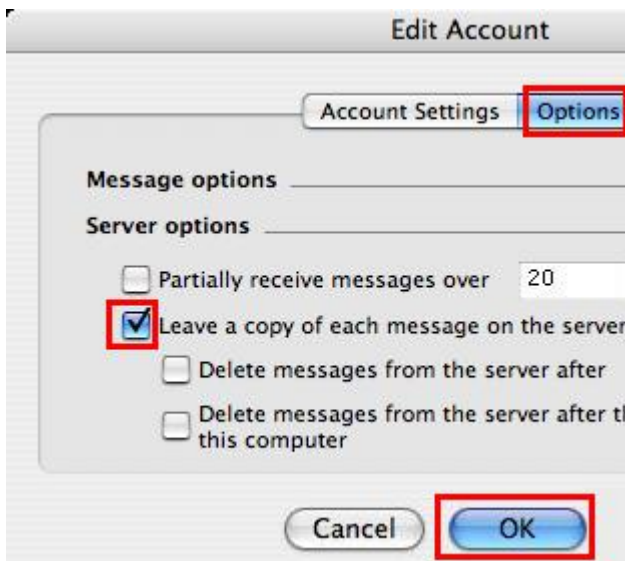


Sending mail

SMTP server: pop.XXXXXX.qwest.net

[Click here for advanced sending options](#)

9. Select the **Options** tab. Put a checkmark next to **Leave a copy of each message on the server**. Click **OK**.



Edit Account

Account Settings **Options**

Message options

Server options

Partially receive messages over 20

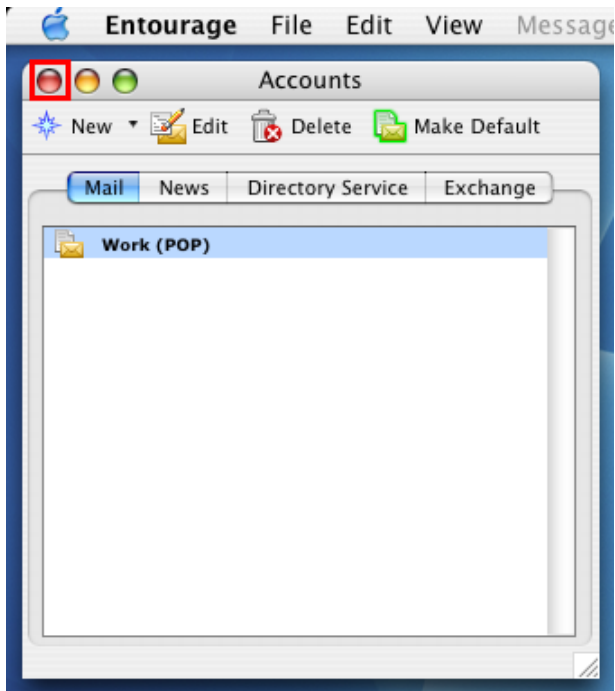
Leave a copy of each message on the server

Delete messages from the server after

Delete messages from the server after this computer

Cancel **OK**

10. Select the red gum drop to close the window.



11. Congratulations, you have configured Entourage for your @qwest.net e-mail.  
(See next page for list of Mail Servers.)



## **Qwest Mail Servers**

### **Arizona**

- Tucson- pop.tcsn.qwest.net
- Phoenix- pop.phnx.qwest.net

### **Colorado**

- Colorado Springs- pop.clsp.qwest.net
- Denver- pop.dnvr.qwest.net

### **Idaho**

- Boise- pop.bois.qwest.net

### **Iowa**

- Des Moines- pop.desm.qwest.net
- Cedar Rapids- pop.cdrr.qwest.net
- Davenport- pop.dvnp.qwest.net

### **Minnesota**

- Duluth- pop.dlth.qwest.net
- Minneapolis/St. Paul- pop.mpls.qwest.net
- Rochester- pop.roch.qwest.net
- Saint Cloud- pop.stcd.qwest.net

### **Montana**

- Billings- pop.blng.qwest.net
- Missoula- pop.mssl.qwest.net

### **Nebraska**

- Omaha- pop.omah.qwest.net

### **New Mexico**

- Albuquerque- pop.albq.qwest.net

### **North Dakota**

- Bismarck- pop.bsmr.qwest.net
- Fargo- pop.farg.qwest.net

### **Oregon**

- Eugene- pop.eugn.qwest.net
- Portland- pop.ptld.qwest.net

### **South Dakota**

- Sioux Falls- pop.sxfl.qwest.net

### **Utah**

- Salt Lake City- pop.slkc.qwest.net

### **Washington**

- Seattle- pop.sttl.qwest.net
- Spokane- pop.spkn.qwest.net

### **Wyoming**

- Cheyenne- pop.chyn.qwest.net