



## How to Download and Install Microsoft Office Outlook Connector

Email Type: @msn.com



### Use this document if:

- You want to configure @msn.com e-mail address using (Delta Sync HTTP)

### This document assumes:

- You know your email address username and password
- You have a working copy, registered copy of Outlook 2003 or 2007
- You have a working Internet connection
- You are a Qwest customer

1. Open up a web browser.



2. Go to <http://download.live.com>, look in the lower right-hand corner of the screen, select '**Microsoft Office Outlook Connector**'.

A screenshot of the navigation menu on the download.live.com website. The menu is divided into two columns. The left column contains links for 'Web browsing', 'Toolbar', and 'Family Safety'. The right column contains links for 'Movie Maker', 'Family Safety', 'Toolbar', and 'Additional programs:'. Under 'Additional programs:', the link 'Microsoft Office Outlook® Connector' is highlighted with a red rectangular box. Other links in this section include 'Office Live Add-in' and 'Microsoft Silverlight'.

3. Click **Download now**.

A screenshot of the Microsoft Office Outlook product page. The page has a yellow header with the text 'Microsoft Office Outlook'. Below the header is a navigation menu on the left with sections for 'Product Information' and 'Help and How-to'. The main content area on the right features the heading 'Microsoft Office Outlook C' and a sub-heading 'Manage all your email accounts'. Below this, there is a paragraph of text describing the Outlook Connector. At the bottom of the main content area, a yellow button with the text 'Download now' is highlighted with a red rectangular box.

4. Scroll down to the bottom of the page, click the **Download** button for Outlook Connector.exe.

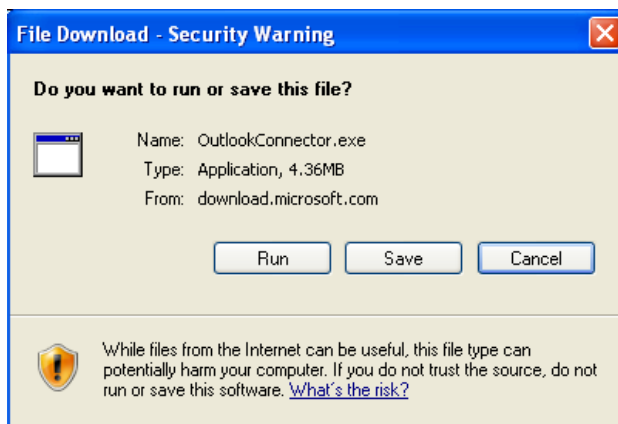
**Files in This Download**

The links in this section correspond to separate files available in

File Name:	File Size	
OutlookConnector.exe	4.4 MB	<a href="#">Download</a>
RTW FAQ final.docx	22 KB	<a href="#">Download</a>

[↑ Top of page](#)

5. Click **Run**.



6. Click **Run**.



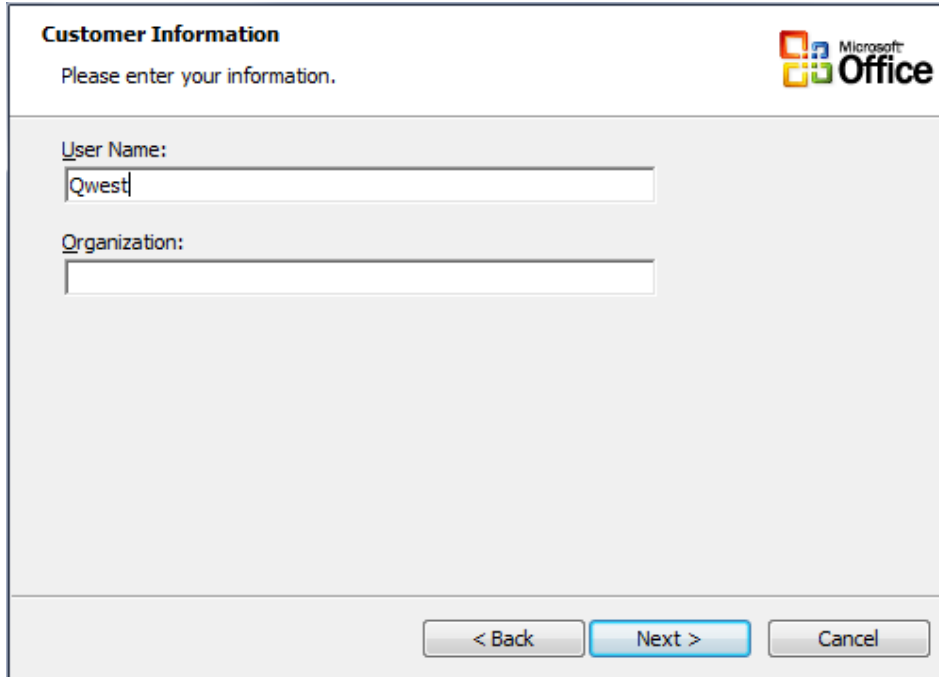
7. Read and agree to the Microsoft Software License, then click **Continue**.




8. Click **Next**.



9. Click **Next**.



**Customer Information** 

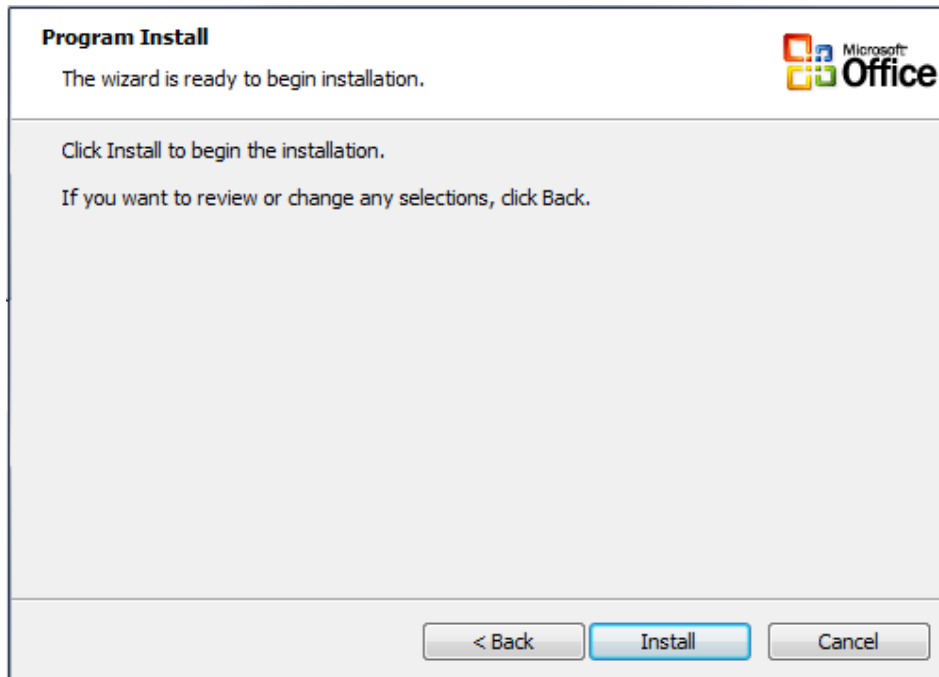
Please enter your information.


User Name:

Organization:

< Back   Next >   Cancel

10. Click **Install**.



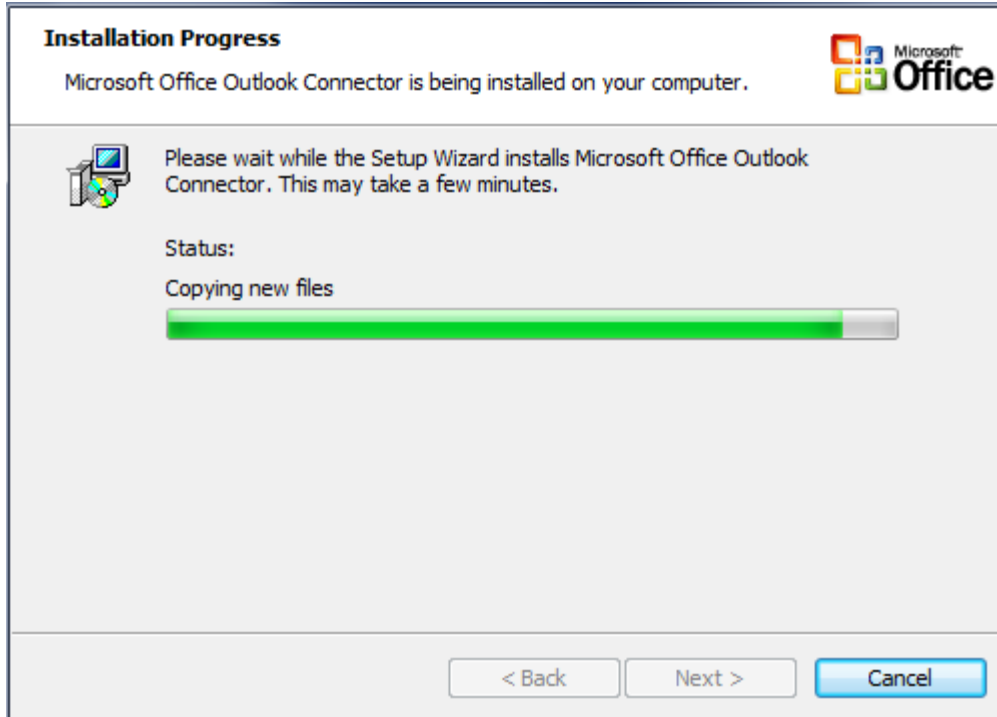
**Program Install** 

The wizard is ready to begin installation.

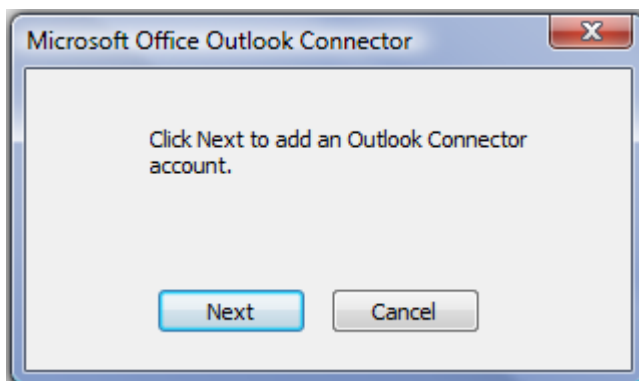
Click Install to begin the installation.  
If you want to review or change any selections, click Back.

< Back   Install   Cancel

11. This screen will display the progress of the installation. **No action is required.**



12. Click **Next**.



13. Enter your @msn.com **E-mail address**, **Password** and **Name**.

Microsoft Office Outlook Connector

Set up Outlook Connector to automatically synchronize your Web-based accounts in Outlook.

**Type your e-mail address and password.** [Help](#)

E-mail address:

Password:

[Forgot your password?](#)

**Type the name that you want to appear in the receiver's Inbox**

Name:

Remember my password

Microsoft Passport Network

[Account Services](#) [Privacy Policy](#) [Terms of Use](#)

© 1999-2006 Microsoft Corporation. All rights reserved.

When people get an e-mail from you, this name will show in the **from** field.

14. On the left-hand side of your screen you will see your email address and any folders you created previously.

