

## Microsoft® Internet Explorer 7 (IE7)

### How to Configure IE7 to Work Online

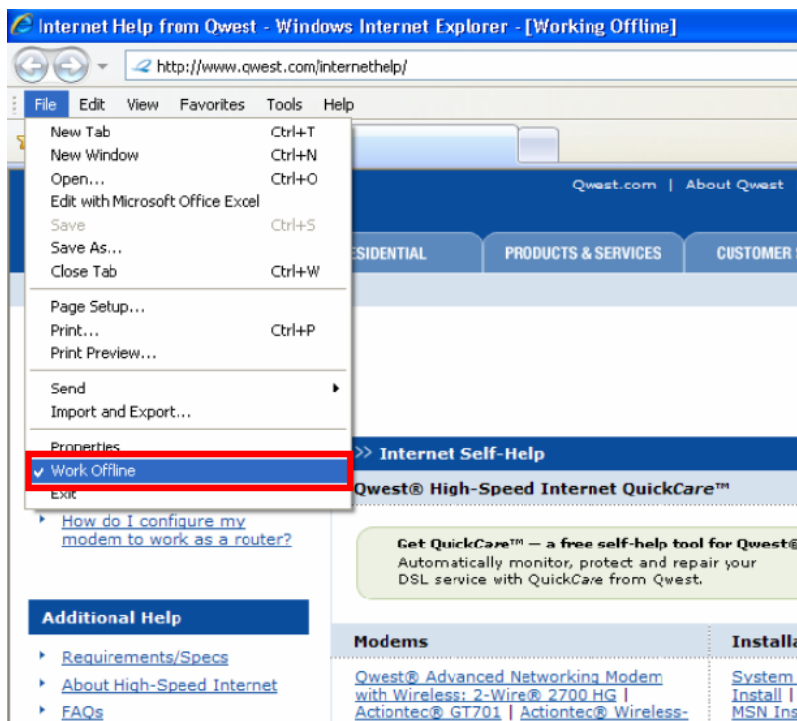
#### Use this document if:

- You want to configure Microsoft® Internet Explorer 7 (IE7) to work online. (If you aren't online, you won't be able to access the Internet.)

#### This document assumes:

- You have IE7 installed and are using it.
- You are connected to the Internet.

1. Open **Internet Explorer**.
2. Select **File**. Then, if **Work Offline** has a checkmark next to it, select it.



3. The checkmark should no longer appear, indicating that you are now working online.