

---

# Actiontec® 1520

## Enabling VPN IPSec/L2TP Pass-Through Instruction Set

---

*Actiontec is a registered trademark of Actiontec Electronics Inc.*

**WARNING!!!! Do not perform the following instructions unless you are an advanced network administrator or you have been instructed to do so by your ISP of choice or support personnel. You may render your DSL service inoperable if the following is implemented improperly. If you have performed the following and rendered your DSL service inoperable, please communicate your actions to your support personnel.**

Enabling VPN (Virtual Private Network) pass-through enables the Actiontec 1520 to pass through L2TP and IPSec VPN information. The Actiontec 1520 does not provide VPN termination.

The following instruction set will guide you through enabling VPN IPSec/L2TP pass-through in the Actiontec 1520. Qwest technical support will only support turning VPN passthrough on or off within the Actiontec 1520. VPN client configuration will not be supported by Qwest DSL technical support. The configuration of a VPN client must be supported by your VPN vendor or designated LAN administrator.

## Actiontec 1520 Enabling VPN Passthrough

The following instruction set will guide you through setting up the Actiontec 1520 to support VPN pass-through of IPsec and L2TP. The Actiontec 1520 does not support VPN termination within the router.

### Configuring the 1520

#### STEP 1

Open your web browser (Internet Explorer® or Netscape® for example).

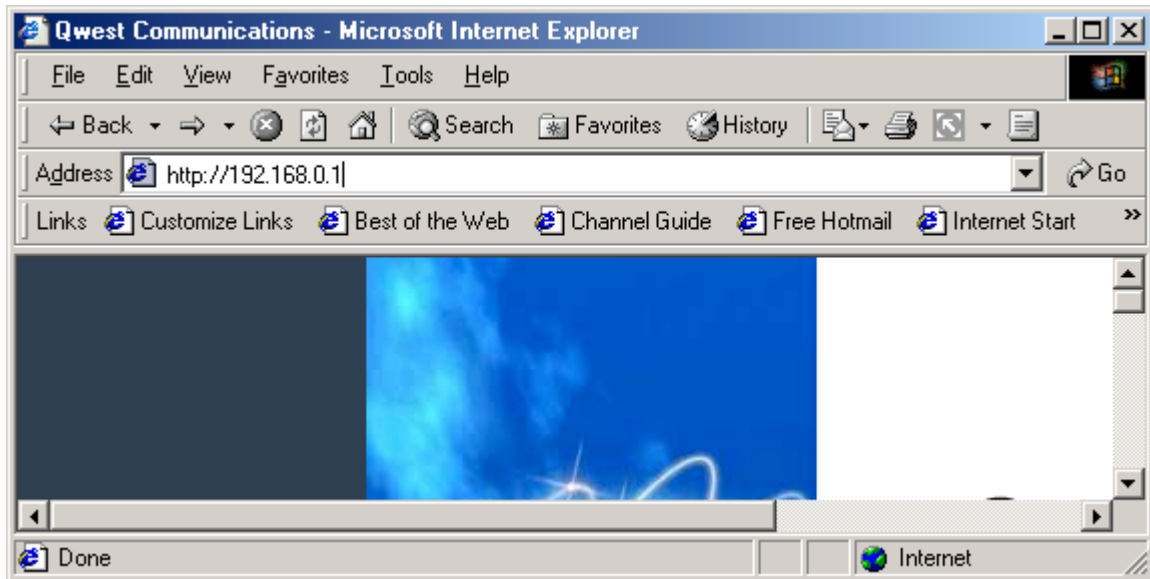


## Actiontec 1520 Enabling VPN Passthrough

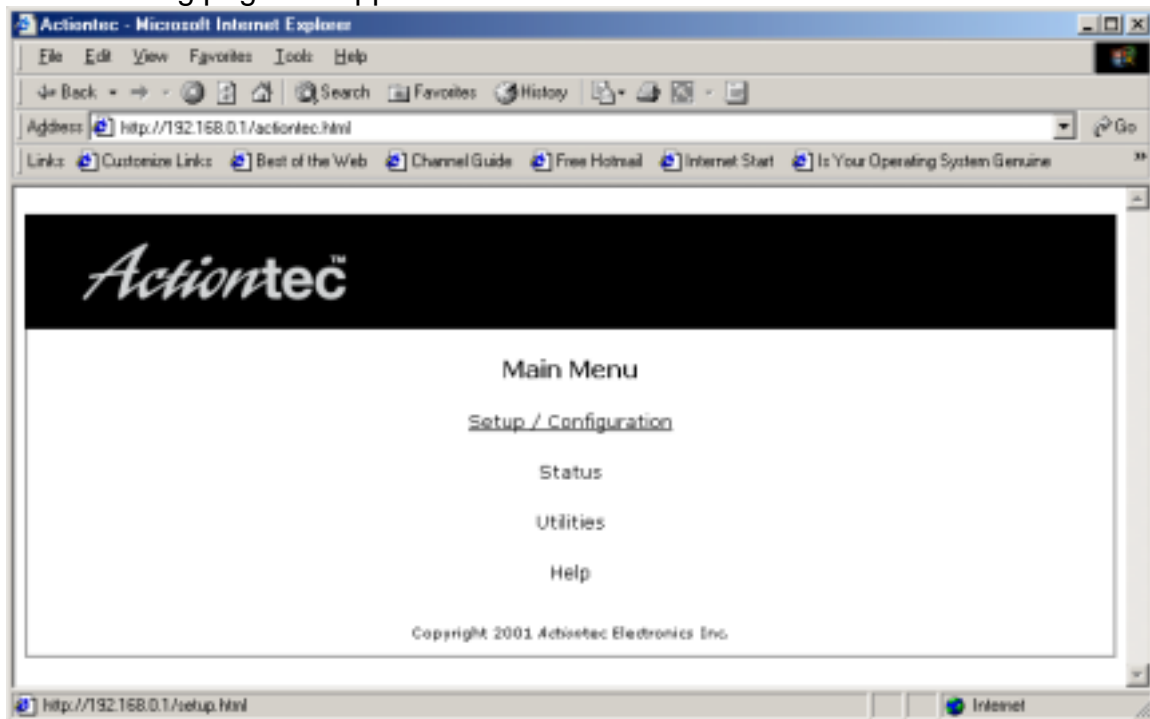
### STEP 2

Type the following URL in the address bar.

<http://192.168.0.1>



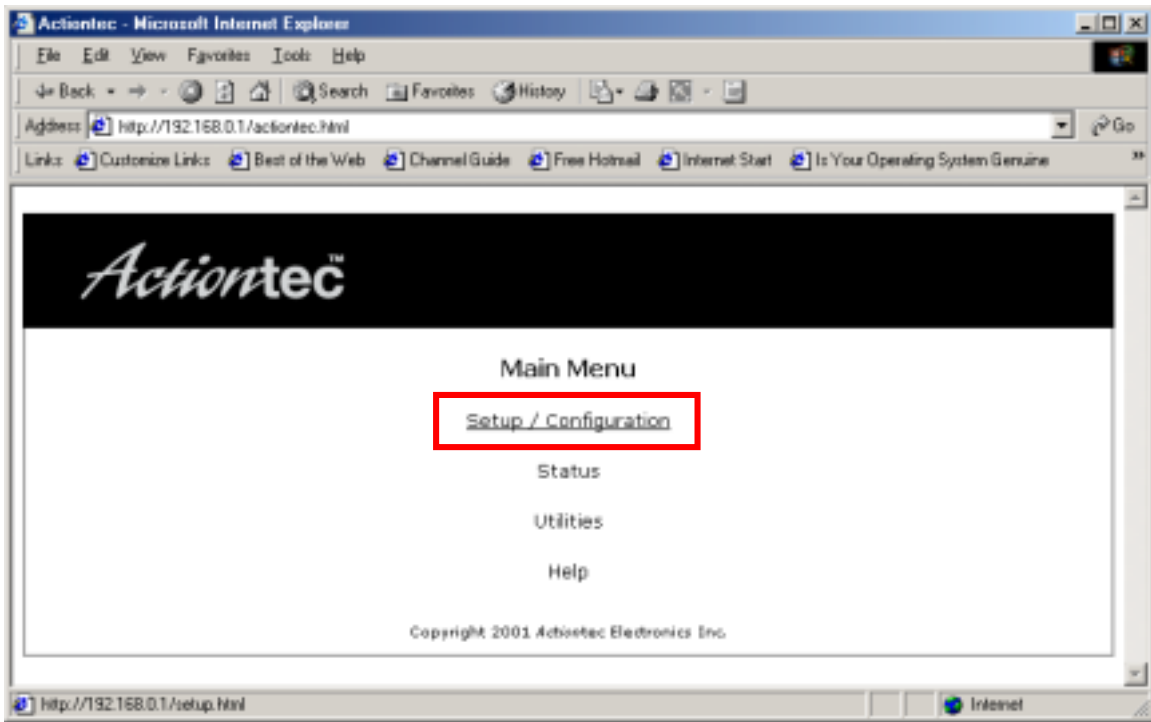
The following page will appear.



**NOTE:** If the Actiontec Main Menu page does not appear as shown above, please ensure the Ethernet cable is connected correctly.

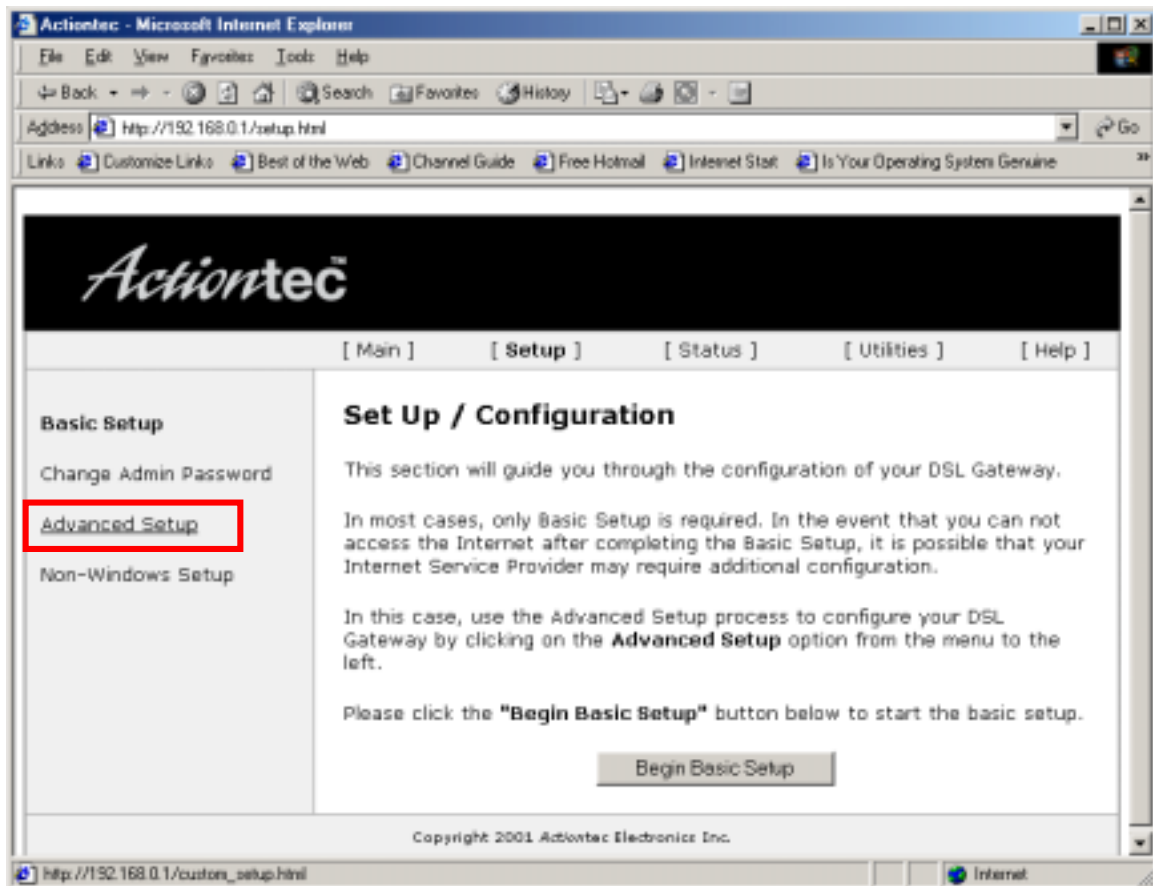
### STEP 3

Click on Setup/Configuration from the Main Menu.



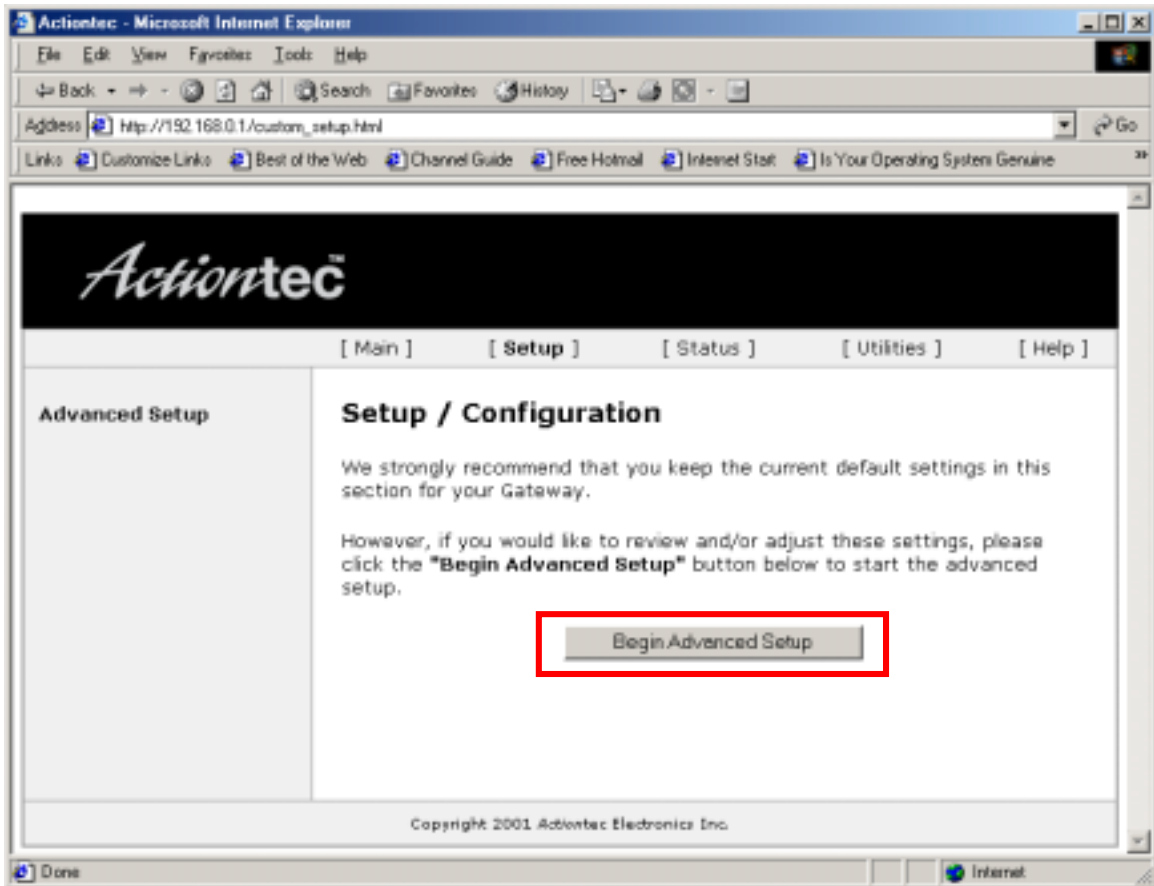
## STEP 4

Click on ADVANCED SETUP in the left column.



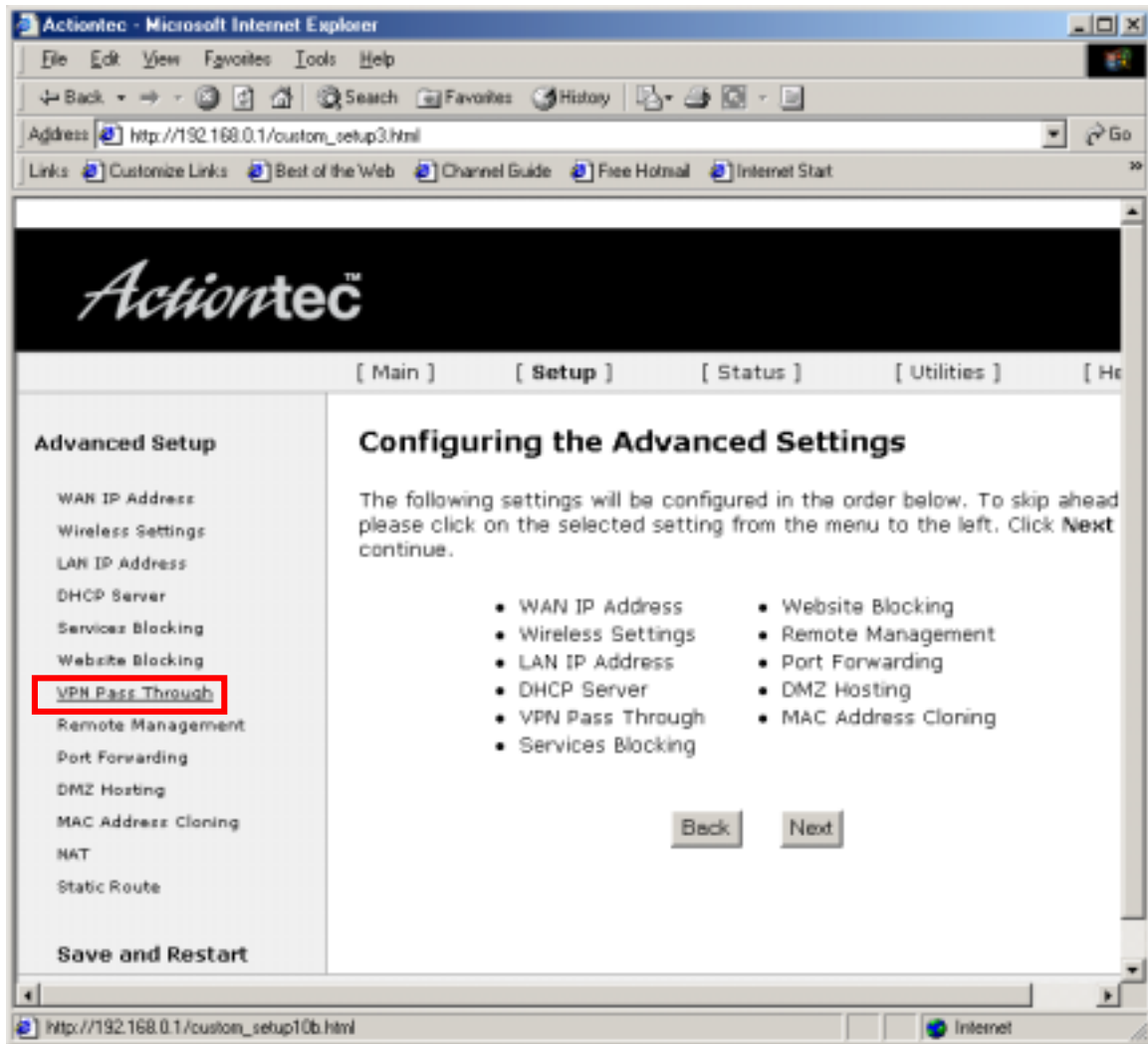
## STEP 5

Click on BEGIN ADVANCED SETUP.



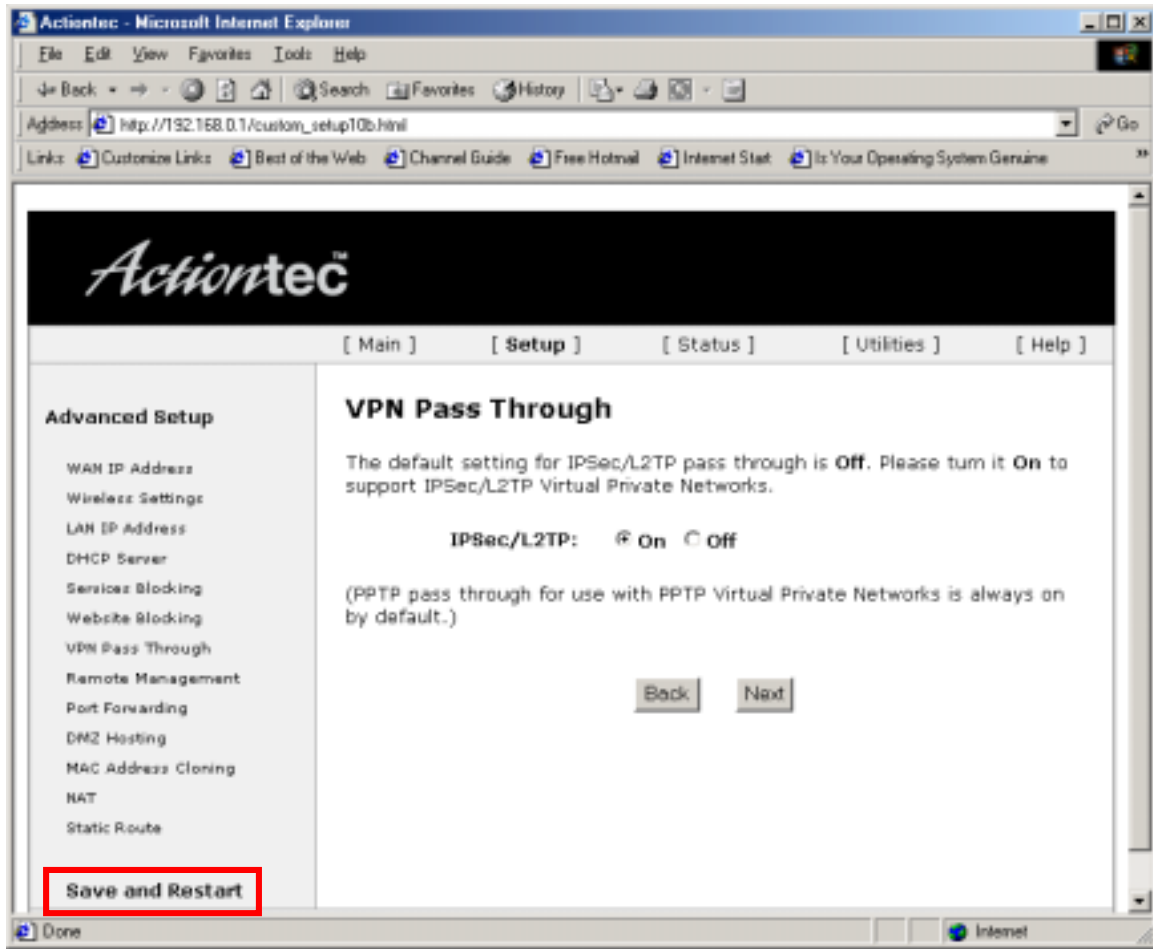
## STEP 6

Click on VPN PASS THROUGH in the left-hand column.



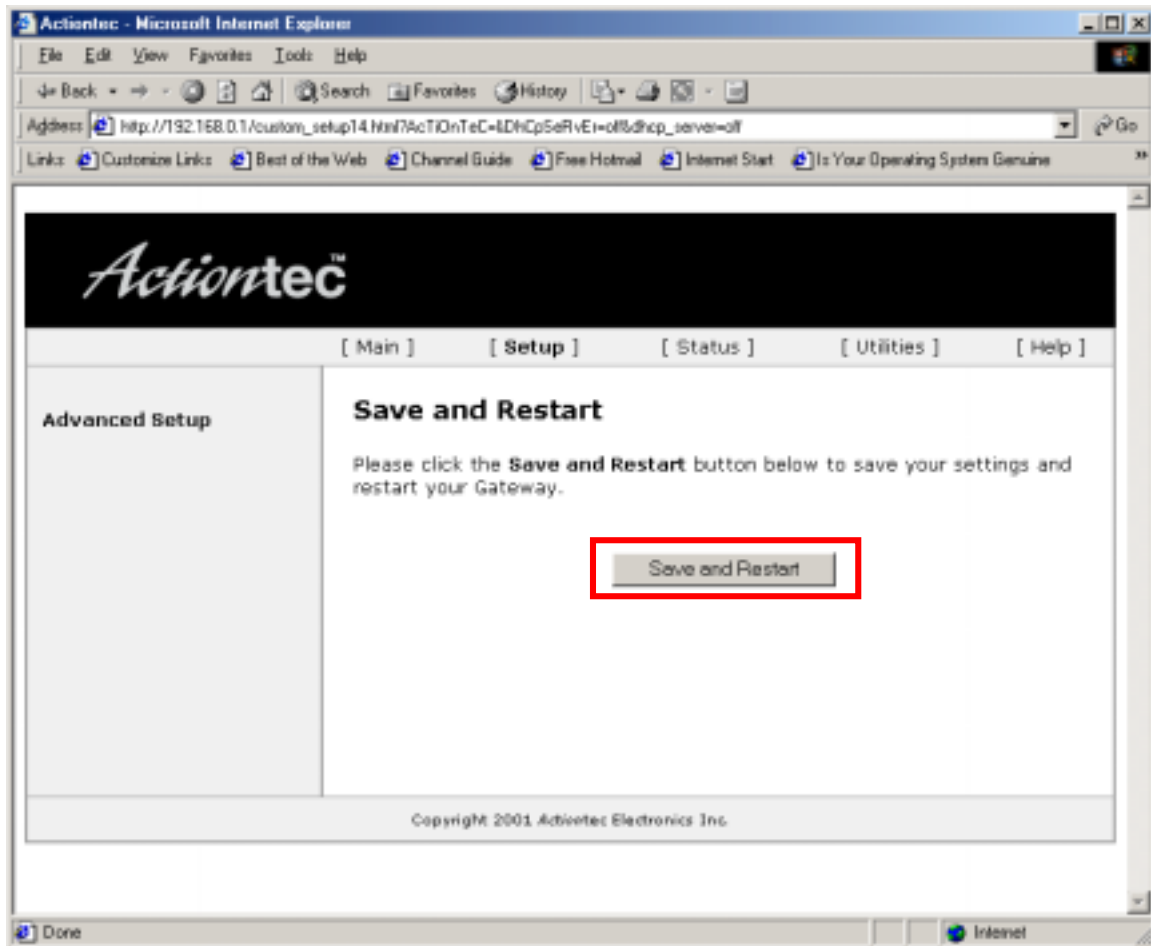
## STEP 7

Select ON for **IPSec/L2TP**. Then, select SAVE AND RESTART in the bottom left hand corner of the screen.



## STEP 8

Click **SAVE AND RESTART** to save the changes and restart the router.



Congratulations, your modem has been configured to support VPN pass-through. Once the Power LED stops blinking the modem is ready for use.

Qwest technical support will only support turning VPN passthrough on or off within the Actiontec 1520. VPN client configuration will not be supported by Qwest DSL technical support. The configuration of a VPN client must be supported by your VPN vendor or designated LAN administrator.