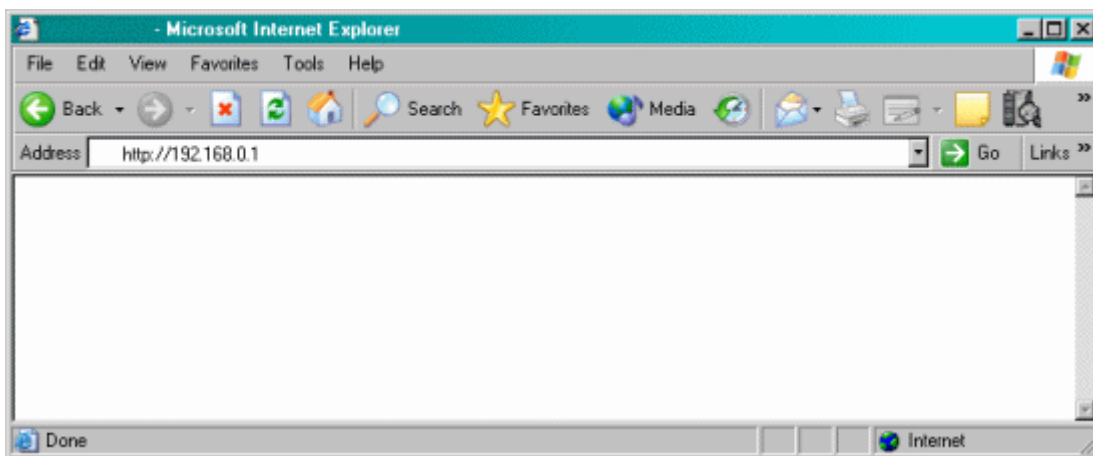


Actiontec® 1520 and 1524

How to Set Up Bridge (RFC 1483) Dynamic IP Addresses for Multiple Computers (all Firmware Versions Except .49)

1. Open your Web browser (Microsoft® Internet Explorer or Netscape®). In the location or address bar, type **192.168.0.1**. Select **Enter**.



2. Select **Setup / Configuration**.



3. Select **Non-Windows Setup** from the options on the left.

Actiontec™

[Main] [**Setup**] [Status] [Utilities] [Help]

Basic Setup

- Change Admin Password
- Advanced Setup
- Non-Windows Setup**

Set Up / Configuration

This section will guide you through the configuration of your DSL Gateway.

In most cases, only Basic Setup is required. In the event that you can not access the Internet after completing the Basic Setup, it is possible that your Internet Service Provider may require additional configuration.

In this case, use the Advanced Setup process to configure your DSL Gateway by clicking on the **Advanced Setup** option from the menu to the left.

Please click the **"Begin Basic Setup"** button below to start the basic setup.

Copyright 2001 Actiontec Electronics Inc.

4. Select **RFC1483 Bridged**. Scroll down.

ISP Protocol

Please select the protocol below listed on your ISP worksheet.

RFC1483 Bridged

RFC1483 Routed

PPPoA

ISP Username

ISP Password

PPPoE

ISP Username

ISP Password

5. Select **Dynamic**. Scroll down.

IP Configuration

Please select your ISP addressing scheme listed on your ISP worksheet.

Dynamic

Static

IP	<input type="text" value="Not Applicable"/>
Subnet	<input type="text" value="Not Applicable"/>
Gateway	<input type="text" value="Not Applicable"/>

6. Select **Dynamic**. Select the **Save and Restart** button.

DNS Configuration

Dynamic

Static

Primary DNS	<input type="text" value="Not Applicable"/>
Secondary DNS	<input type="text" value="Not Applicable"/>

7. Select **Save and Restart**. The router will reboot with the new setup.



8. When the Power LED stops flashing, the configuration is complete.

