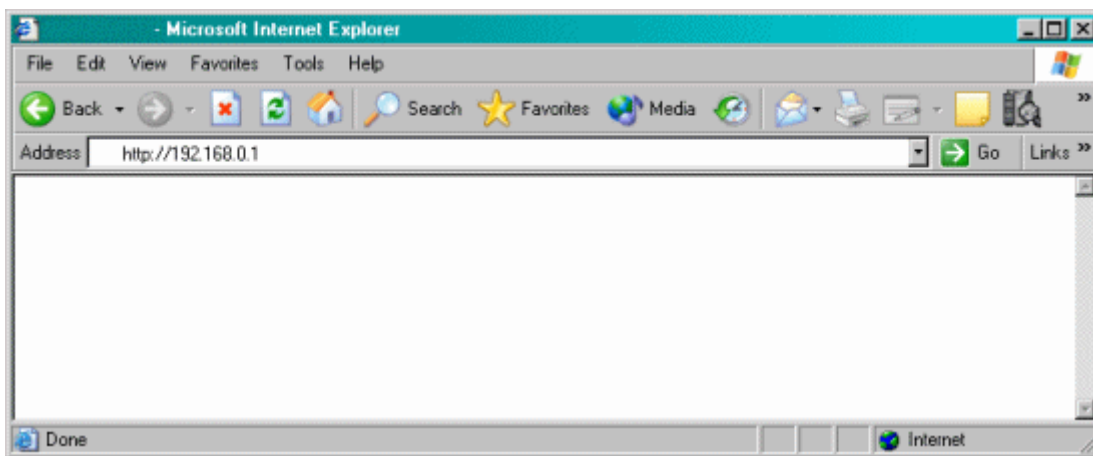


Actiontec® 1520 and 1524

How to Configure Port Forwarding

*Only experienced network administrators should perform this process.
Qwest DSL® technical support does not support this process.*

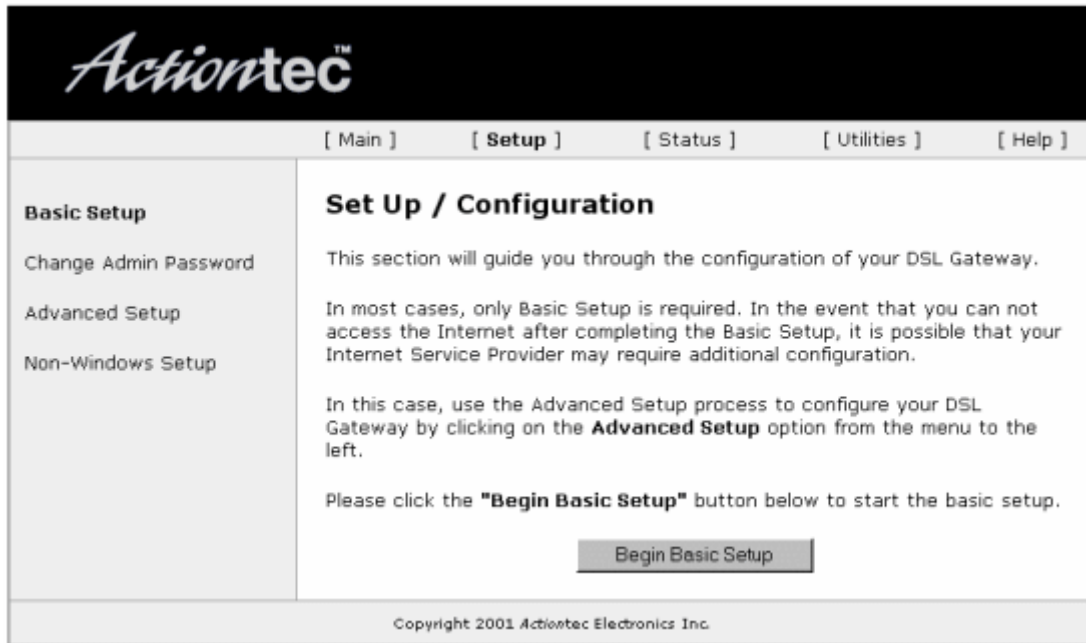
1. Open your Web browser (Microsoft® Internet Explorer or Netscape®). In the location or address bar, type **192.168.0.1**. Select **Enter**.



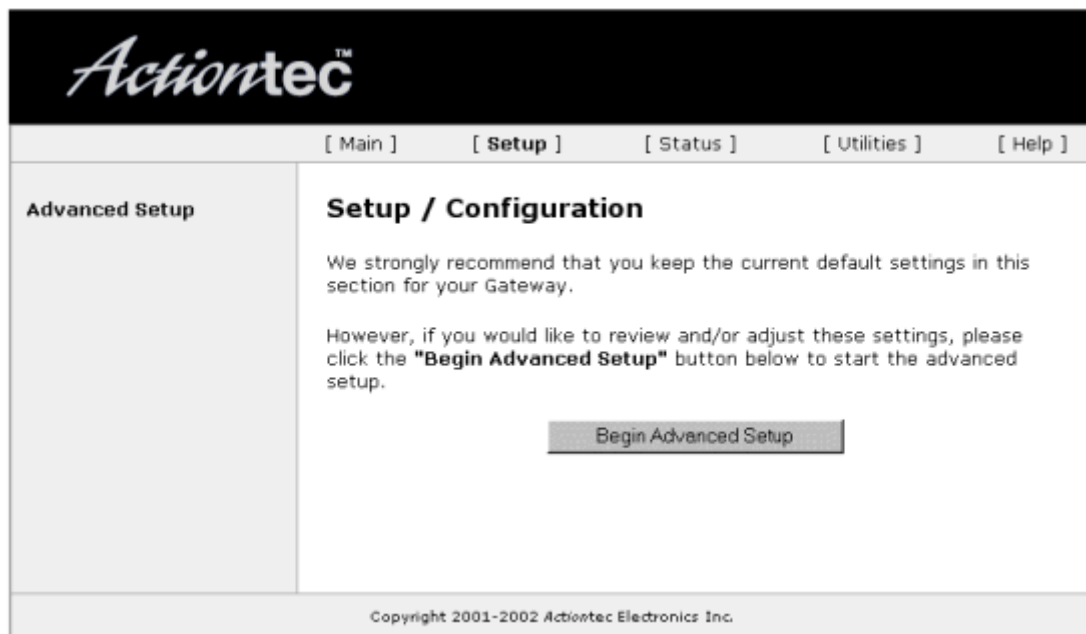
2. Select **Setup/Configuration**.



3. Select **Advanced Setup** from the options on the left.



4. Select **Begin Advanced Setup**.



5. Select **Port Forwarding** from the options on the left.

- Type in the port and/or port ranges you want to forward.
- Select the protocol type.
- Enter the IP Address of the PC that will use those ports.
- Select **Add** and you should see the list of forwarded ports in the white box.
- Select **Next**.
- Then, select **Save and Restart** in the bottom left.

The screenshot shows the Actiontec web interface for configuring Port Forwarding. The page title is "Actiontec" and the navigation menu includes [Main], [Setup], [Status], [Utilities], and [Help]. The left sidebar lists various settings, with "Port Forwarding" selected. The main content area is titled "Port Forwarding" and contains the following elements:

- A heading "Port Forwarding" and a sub-heading "Please enter ports and port ranges, that some internet applications require to be forwarded, in the spaces below."
- Form fields for "IP Port Range" (with a "to" separator), "Protocol" (a dropdown menu set to "TCP"), and "IP Address".
- "Add" and "Remove" buttons below the form fields.
- A "List of Forwarded Ports" section with a large empty white box.
- "Back" and "Next" buttons below the list box.
- An "Advanced ..." button to the right of the list box.
- A "Save and Restart" section at the bottom left of the sidebar.
- A copyright notice at the bottom: "Copyright 2001-2002 Actiontec Electronics Inc."

6. Select **Save and Restart**.



7. When the Power LED stops flashing, the configuration is complete.

