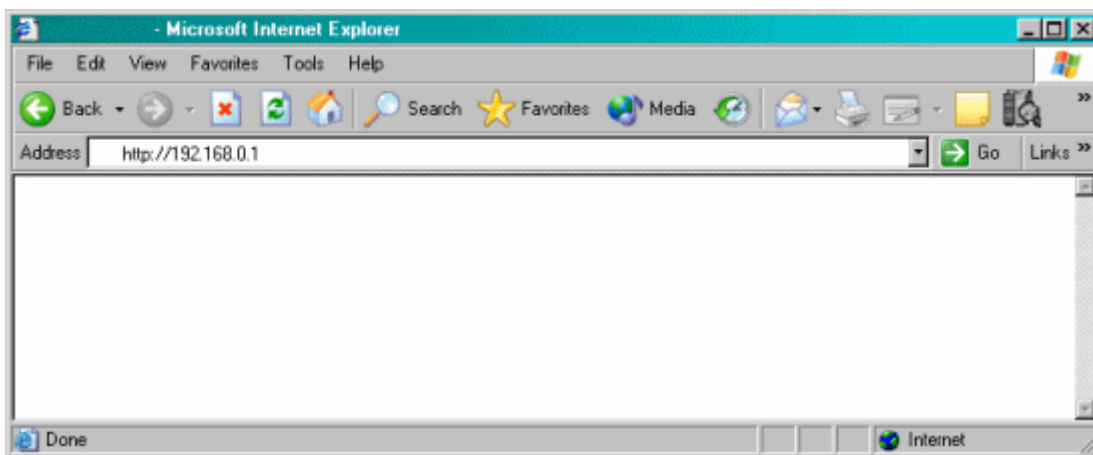


Actiontec® 1520 and 1524

How to Configure DMZ Hosting

*Only experienced network administrators should perform this process.
Qwest DSL® technical support does not support this process.*

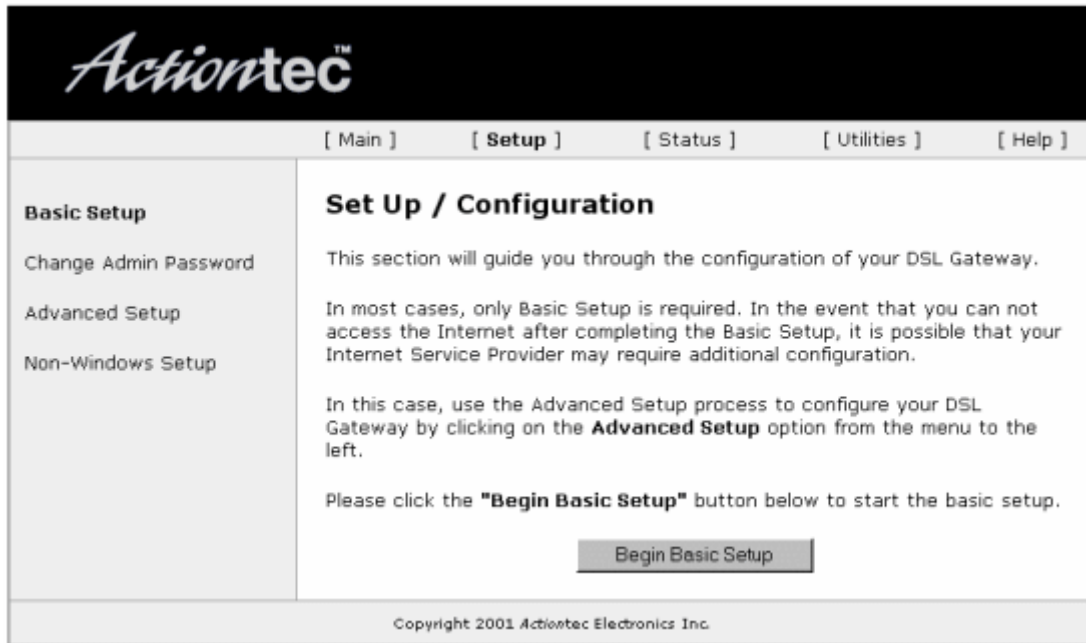
1. Open your Web browser (Microsoft® Internet Explorer or Netscape®). In the location or address bar, type **192.168.0.1**. Select **Enter**.



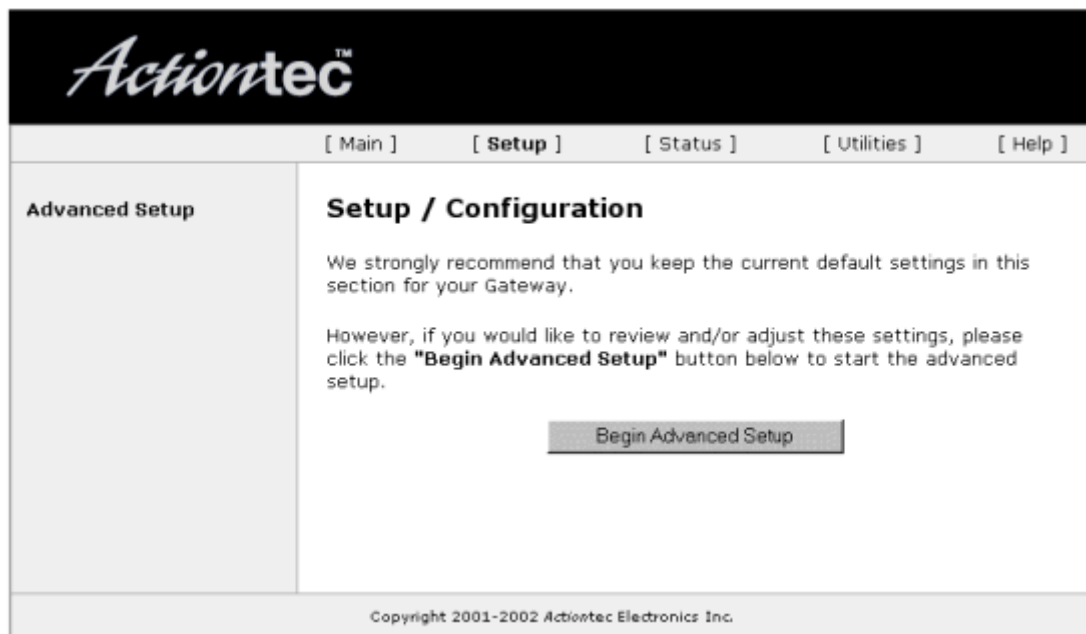
2. Select **Setup / Configuration**.



3. Select **Advanced Setup** from the options on the left.



4. Select **Begin Advanced Setup**.



5. Select **DMZ Hosting** from the options on the left. Select **On** and type in the IP address of your computer. Select **Next**. Then, select **Save and Restart** in the bottom left of the screen.

The screenshot shows the Actiontec web interface. At the top, the Actiontec logo is displayed. Below the logo is a navigation bar with links: [Main], [Setup], [Status], [Utilities], and [Help]. The main content area is divided into two sections. On the left is a sidebar menu titled "Advanced Setup" with the following items: WAN IP Address, Wireless Settings, LAN IP Address, DHCP Server, Services Blocking, Website Blocking, VPN Pass Through, Remote Management, Port Forwarding, DMZ Hosting, Firewall, Dynamic Routing, NAT, Static Routing, and MAC Address Cloning. Below this menu is a "Save and Restart" button. The main content area is titled "DMZ Hosting" and contains the following text: "Your Gateway can be configured to support Online Gaming and Internet Conferencing services on a network computer. To use this feature, enter the IP Address of the computer in the DMZ Host field below." Below this text is a text input field labeled "DMZ Host IP Address" containing the value "192.168.0.". Below the input field are two radio buttons: "On" (which is selected) and "Off". At the bottom of the main content area are two buttons: "Back" and "Next". At the very bottom of the page, there is a copyright notice: "Copyright 2001-2002 Actiontec Electronics Inc."

6. Select the **Save and Restart** button. This will reboot the router with the new setup.



7. When the Power LED stops flashing, the configuration is complete.

