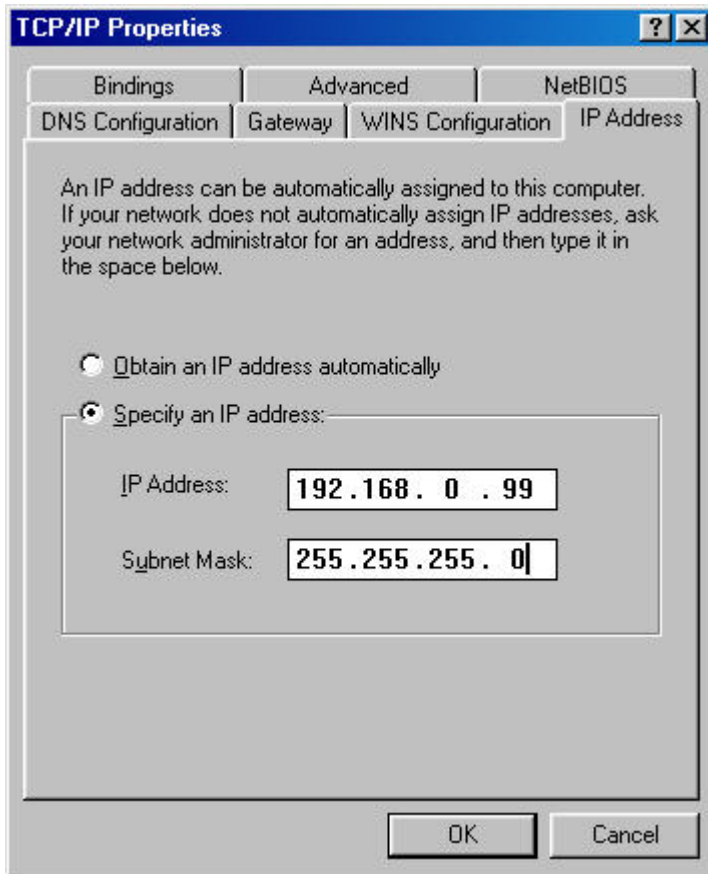


## Actiontec® 1520 and 1524

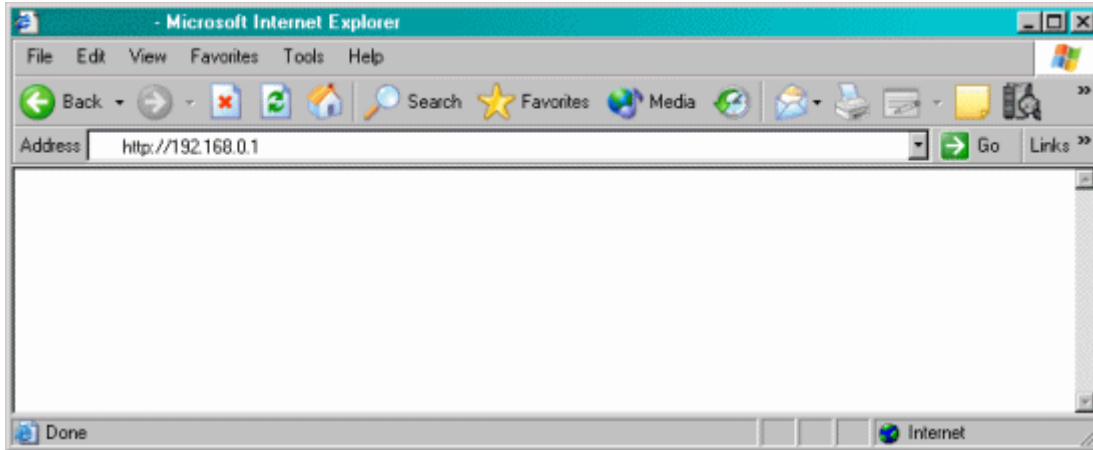
### How to Access the Web Interface in Bridge Mode

1. Change the TCP/IP settings on your computer to a static IP of **192.168.0.99**.



2. Restart your computer.

3. Open your Web browser (Microsoft® Internet Explorer or Netscape®). In the location or address bar, type **192.168.0.1**. Select **Enter**.



4. Now you have access to the Web interface for the modem.

