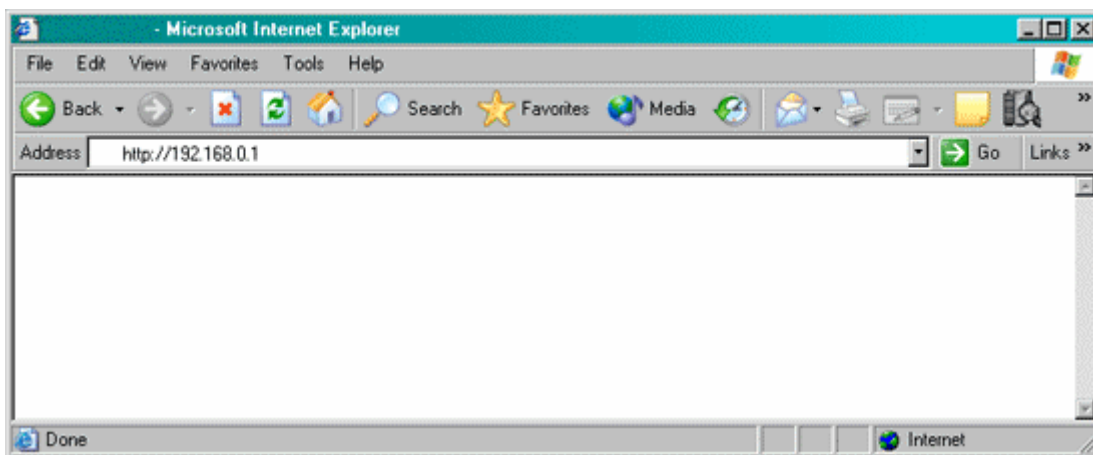


## Actiontec® 1520 and 1524

### How to Set Up a Bridge (RFC 1483) IP Address for a Single Computer .49 Firmware

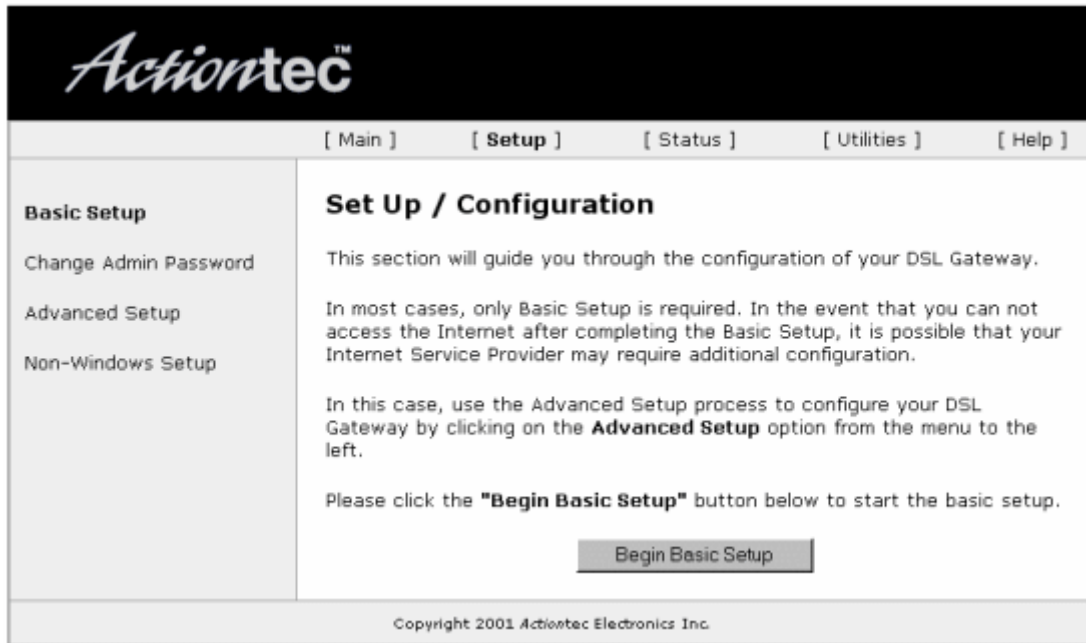
1. Open your Web browser (Microsoft® Internet Explorer or Netscape®). In the location or address bar, type **192.168.0.1**. Select **Enter**.



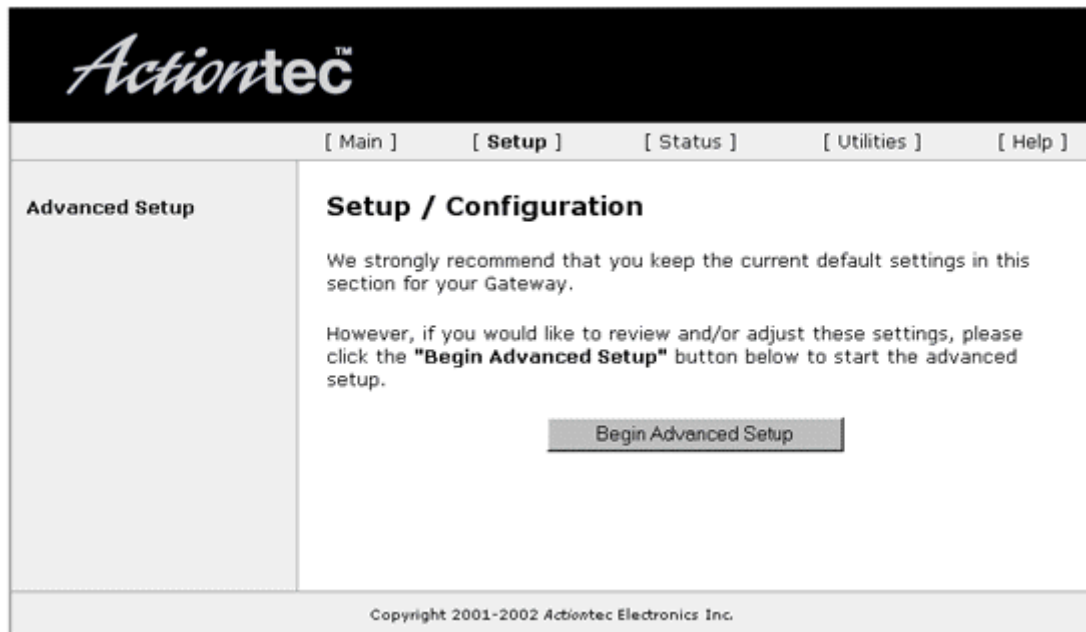
2. Select **Setup / Configuration**.



3. Select **Advanced Setup** from the options on the left.



4. Select **Begin Advanced Setup**.



5. Select **WAN IP Address** from the options on the left. Select **Transparent Bridging**. Under Unnumbered mode, select **No**. Select **Next**. Then select **Save and Restart** at the bottom left of the screen.

The screenshot shows the Actiontec web interface for configuring WAN IP Address. The page has a black header with the Actiontec logo. Below the header is a navigation bar with links: [ Main ], [ Setup ], [ Status ], [ Utilities ], and [ Help ]. The main content area is divided into a left sidebar and a main panel. The sidebar is titled "Advanced Setup" and lists various configuration options: WAN IP Address, Wireless Settings, LAN IP Address, DHCP Server, Services Blocking, Website Blocking, VPN Pass Through, Remote Management, Port Forwarding, DMZ Hosting, MAC Address Cloning, NAT, and Static Route. Below the sidebar is a "Save and Restart" button. The main panel is titled "WAN IP Address" and contains the following text: "Please make the appropriate selection for your Broadband connection." Below this text are five radio button options:  Transparent Bridging,  Obtain an IP Address through PPPoE,  Obtain an IP Address through PPPoA,  Obtain an IP Address through DHCP, and  Specify a Static IP Address. Below these options is the "Unnumbered mode:" section with two radio buttons:  yes and  no. At the bottom of the main panel are two buttons: "Back" and "Next". The footer of the page contains the text "Copyright 2001 Actiontec Electronics Inc."

6. Select **Save and Restart**. The router will reboot with the new setup.



7. When the Power LED stops flashing, the configuration is complete.

