

Raw Loop Data Table of Contents

12.	RAW LOOP DATA	2
12.1	BUSINESS DESCRIPTION.....	2
12.1.1	<i>Query Type - Response Summary</i>	<i>2</i>
12.2	BUSINESS MODEL.....	3
12.3	RAW LOOP DATA SCHEMA	4

12. RAW LOOP DATA

12.1 Business Description

12.1.1 Query Type - Response Summary

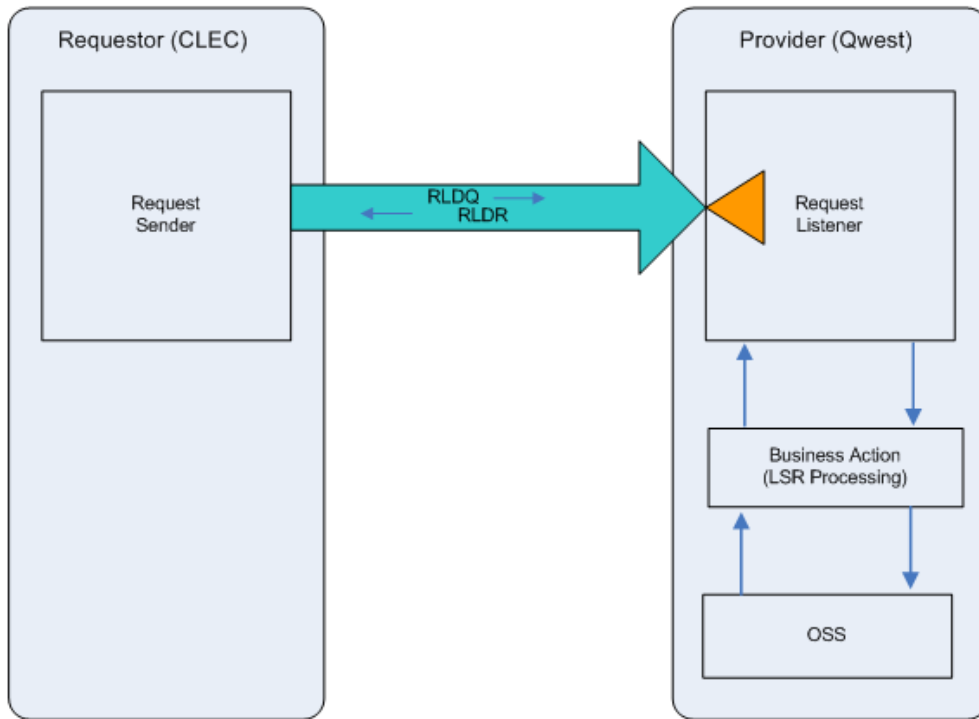
RLDQ	Raw Loop Data Query	
1	RLDQ by TN (TNADDRCKTIND=T)	Good (RESPONSE =G)
2	RLDQ by TN (TNADDRCKTIND=T)	Bad (RESPONSE = B)
3	RLDQ by Address (TNADDRCKTIND=A)	Good (RESPONSE =G)
4	RLDQ by Address (TNADDRCKTIND=A)	Bad (RESPONSE = B)

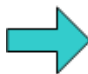
12.2 Business Model

Raw Loop Data

Raw Loop Data enables CLECs the ability to query for and receive information regarding the makeup of a loop in order to determine whether or not a loop is capable of supporting DSL services.

Raw Loop Data



 Pre-order requests are synchronous – Requestor sends the request and waits to receive the response

1. The CLEC submits a RLDQ by providing either a valid telephone number, ECCKT, or an address that has at least one working telephone number.
2. If the RLDQ fails the IMA edits, RLDR (BAD) will be returned.
3. If the RLDQ passes the IMA edits, the query will be sent to the Operations Support System (OSS). This system will respond with one of two responses: BAD or GOOD.
4. RLDR (BAD) will be returned when the RLDQ encounters an error(s) with the OSS.
5. RLDR (GOOD) will be returned with information regarding the makeup of the loop.

12.3 Raw Loop Data Schema

Please see Appendix F – WSDL - Pre-Order.