

Meet Point Validation Table of Contents

| | | |
|------------|--|----------|
| 11. | MEET POINT VALIDATION..... | 2 |
| 11.1 | BUSINESS DESCRIPTION..... | 2 |
| 11.1.1 | <i>Query Type - Response Summary</i> | <i>2</i> |
| 11.2 | BUSINESS MODEL..... | 3 |
| 11.3 | MEET POINT SCHEMA | 4 |

11. Meet Point Validation

11.1 Business Description

11.1.1 Query Type - Response Summary

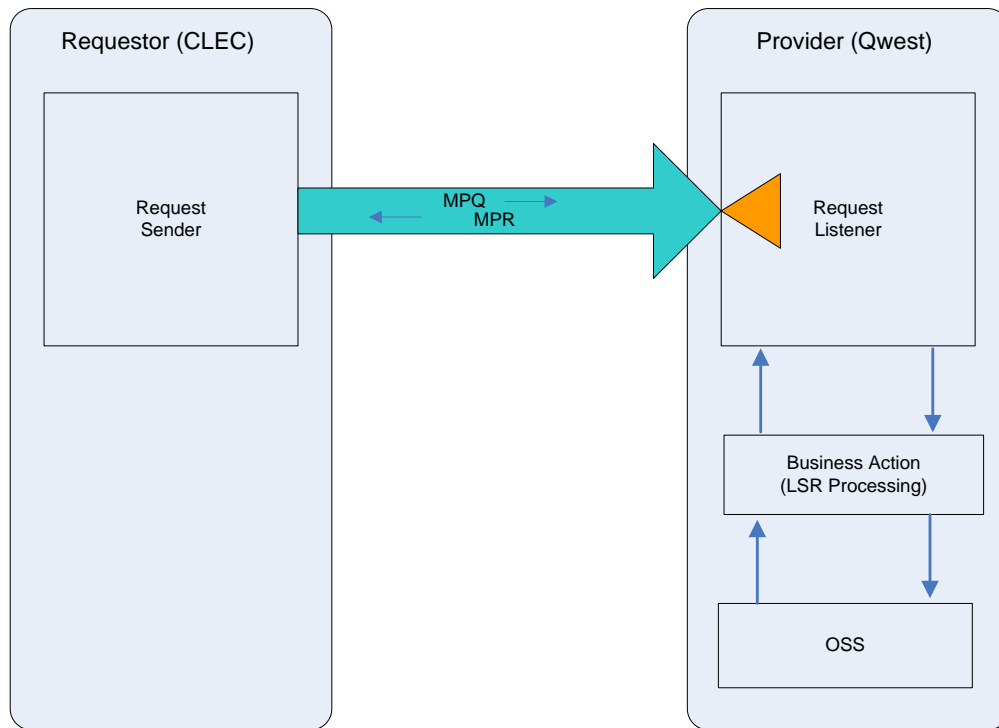
| MPQ | Meet Point Query | |
|-----|--|--------------------|
| | <i>Select all queries appropriate for the location of the CLEC's POTS SPLITTER facilities.</i> | |
| | | |
| 1 | MPQ by POTSSPLIT List (SEARCHTYP=P) | Good (RESPONSE =G) |
| 2 | MPQ by POTSSPLIT List (SEARCHTYP=P) | Bad (RESPONSE = B) |
| | | |
| 3 | MPQ by POTSSPLIT Range (SEARCHTYP=S) | Good (RESPONSE =G) |
| 4 | MPQ by POTSSPLIT Range (SEARCHTYP=S) | Bad (RESPONSE = B) |
| | | |
| 1 | MPQ by CABCONN List (SEARCHTYP=C) | Good (RESPONSE =G) |
| 2 | MPQ by CABCONN List (SEARCHTYP=C) | Bad (RESPONSE = B) |
| | | |
| 3 | MPQ by CABCONN Range (SEARCHTYP=R) | Good (RESPONSE =G) |
| 4 | MPQ by CABCONN Range (SEARCHTYP=R) | Bad (RESPONSE = B) |

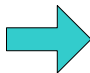
11.2 Business Model

Meet Point

Meet Point enables the CLEC to validate POTS splitter and cable connections required for Shared Loop orders.

Meet Point



 Pre-order requests are synchronous – Requestor sends the request and waits to receive the response

1. The CLEC submits an MPQ.
2. If the MPQ fails the IMA edits, MPR (BAD) will be returned.

If the MPQ passes the IMA edits, the query will be sent to the Operations Support System (OSS). This system will respond with one of two responses: BAD or GOOD.

3. A MPR (BAD) will be returned when the MPQ encounters an error(s) with the OSS.
4. A MPR (GOOD) will be returned with a list of validated and available POTS splitters or cable connections.

11.3 Meet Point Schema

Please see Appendix F – WSDL - Pre-Order.